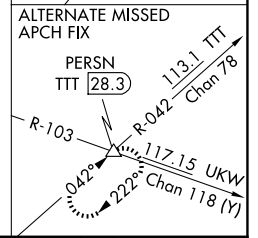
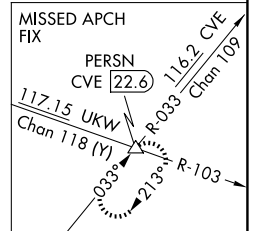
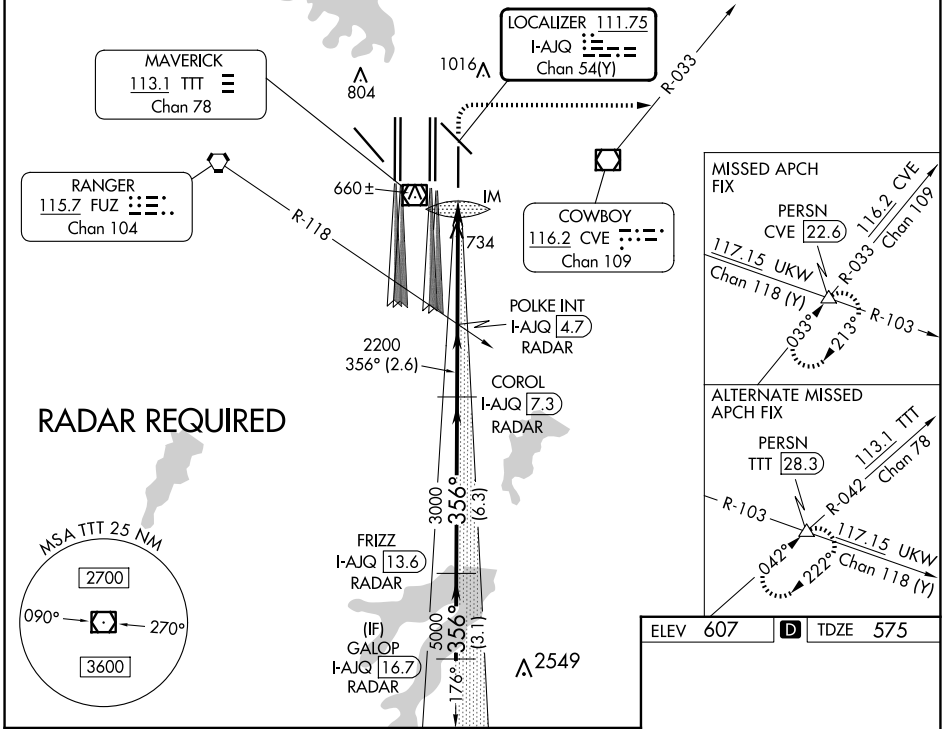


LOC/DME I-AJQ 111.75 Chan 54(Y)	APP CRS 356°	Rwy Idg TDZE Apt Elev 8500 575 607
--	------------------------	--

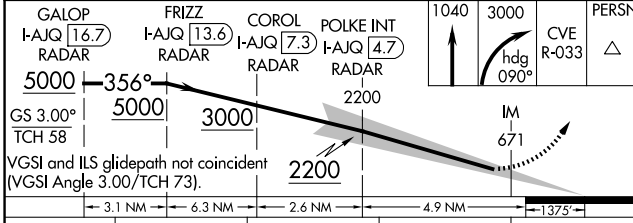
ILS RWY 35R (CAT II & III)

DALLAS-FORT WORTH INTL (DFW)

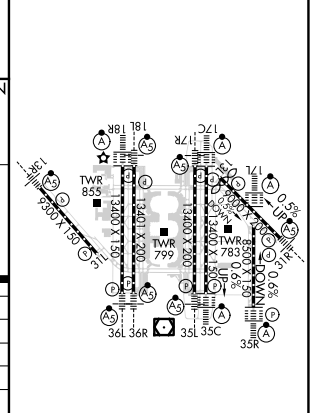
Simultaneous approach authorized with Rwy 36L/R and Rwy 35L/C. DME required.		ALSF-2 	MISSED APPROACH: Climb to 1040 then climbing right turn to 3000 on heading 090° and CVE VOR/DME R-033 to PERSN/CVE 22.6 DME and hold.		
D-ATIS ARR 123.775 DEP 135.925	LONE STAR APP CON 119.4	DFW TOWER 126.55 127.5 EAST 124.15 134.9 WEST	GND CON 121.65 121.8 EAST 121.85 WEST	CLNC DEL 128.25	CPDLC



ELEV 607	TDZE 575
----------	----------



VGS1 and ILS glidepath not coincident (VGS1 Angle 3.00/TCH 73).				
3.1 NM	6.3 NM	2.6 NM	4.9 NM	1.375'
A	B	C	D	
S-ILS 35R	CAT II RA 94/12		100 DA 675	
S-ILS 35R	CAT IIIa		RVR 07	
S-ILS 35R	CAT IIIb		RVR 06	
S-ILS 35R	CAT IIIc		NA	



CATEGORY II & III ILS - SPECIAL AIRCREW & AIRCRAFT CERTIFICATION REQUIRED

HIRL all Rwys
REL Rwys 13L and 31L
TDZ/CL all Rwys except 13L, and 31L

SC-2, 20 MAR 2025 to 17 APR 2025

SC-2, 20 MAR 2025 to 17 APR 2025