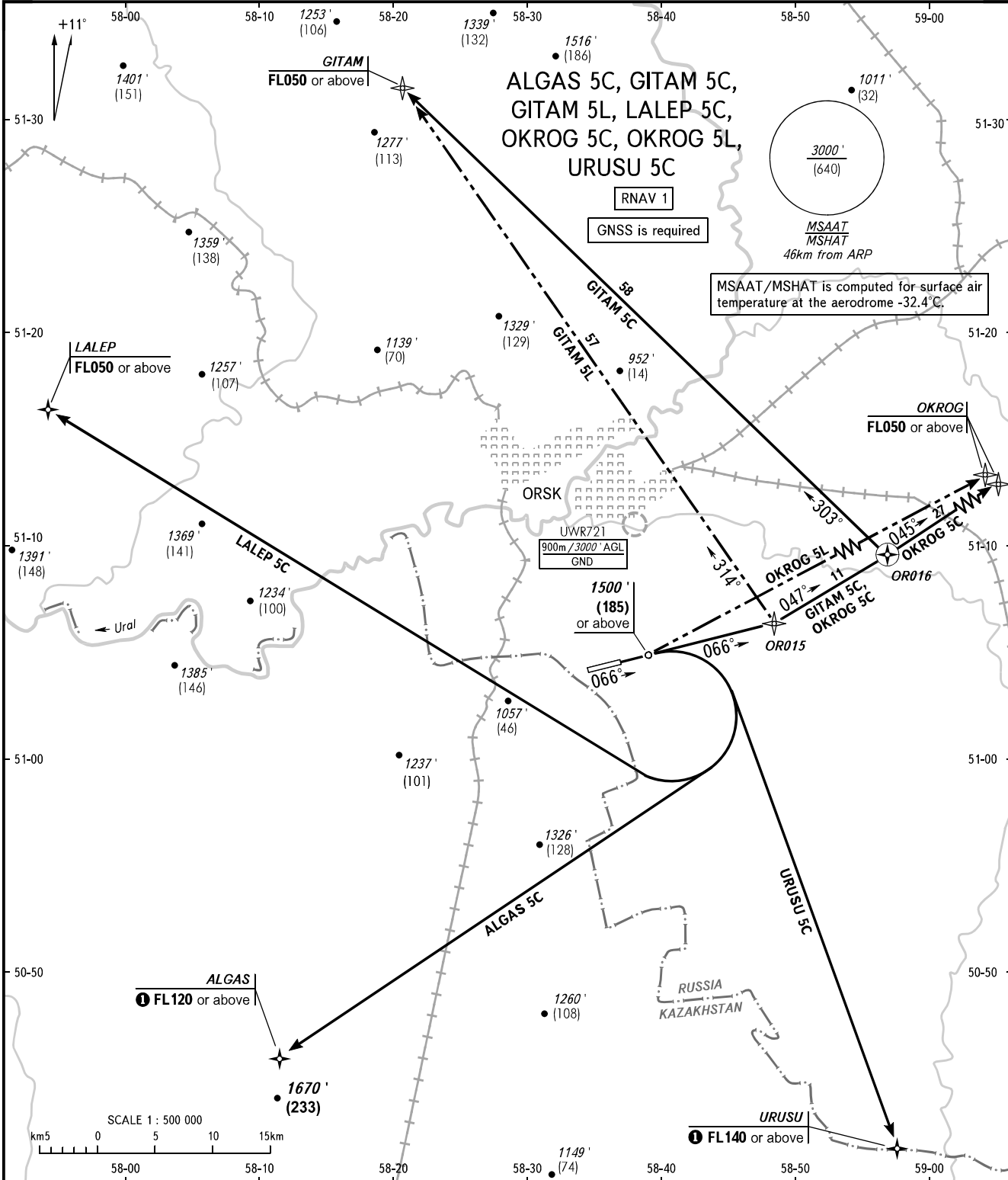


STANDARD DEPARTURE CHART
INSTRUMENT (SID) - ICAO

TRANSITION ALT: 3000'
TRANSITION HGT: (640)

ORSK, RUSSIA
ORSK
RNAV RWY 07



TOWER 122.700

WARNING:

- The minimum climb gradients are as follows (required due to the airspace limitation):
 - 4.4% up to FL050 for SID GITAM 5C ①;
 - 4.9% up to FL120 for SID ALGAS 5C ②;
 - 7.5% up to FL140 for SID URUSU 5C ③.
- Turn before passing DER is PROHIBITED.

① Lower flight levels are AVBL by coordination with ATS unit.

② When flight levels below FL120 are prohibited for passing ALGAS and when flight levels below FL140 are prohibited for passing URUSU.

BEARINGS AND TRACKS ARE MAGNETIC
ALTITUDES IN FEET
HEIGHTS IN METRES
ELEVATIONS IN FEET AND METRES
DISTANCES IN KILOMETRES

Alt set: -QNH(QFE on req);
-hPa(mm on req).