

AERODROME CHART-ICAO

LAMPEDUSA

L I C D 35°29'53" N 012°37'06" E *

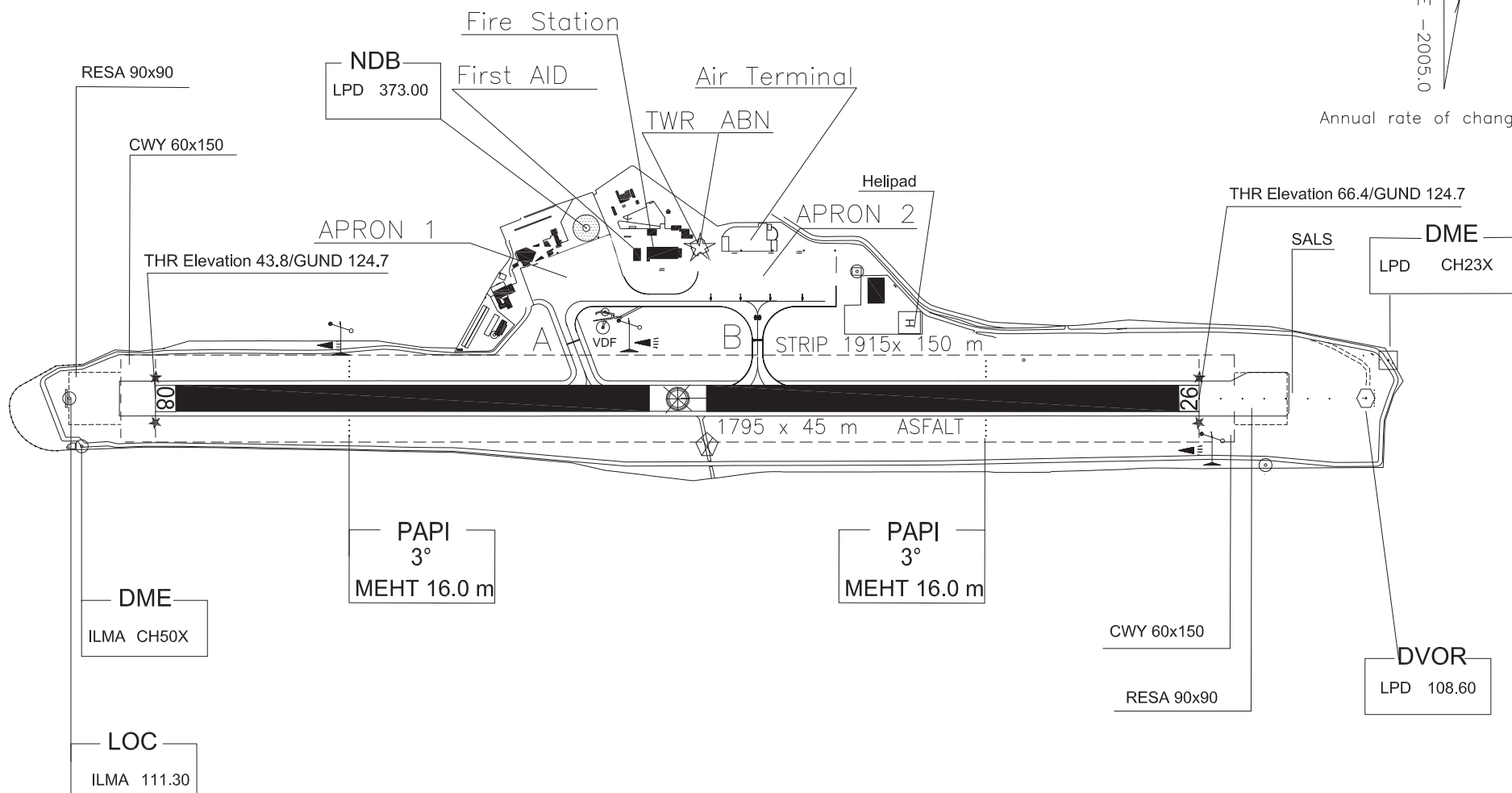
Bearings are magnetic
Distances in metres
Elevation in ft AMSL
Coordinates WGS84

| | | | |
|---------|------|-----------------------------------|--------------------------|
| TWR | | AD ELEV | |
| 123.500 | | 66 | |
| | | APRON ELEV | |
| | | 47 | |
| RWY | QFU | THR | bearing strength |
| 08 | 079° | N 35°29'47.94" E 012°36'29.93" | Asphalt PCN66/F/A/W/T |
| 26 | 259° | N 35°29'57.42" E 012°37'40.19" | |

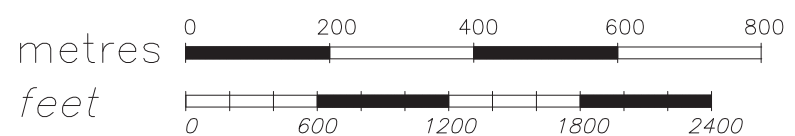
| TWY IDENT | WIDTH | bearing strength |
|-----------|-------|------------------|
| A | 18 | PCN NIL |
| B | 18 | PCN NIL |

LEGEND:
1) ⊗ Service Road not lighted and not usable by ACFT
2) * RTIL

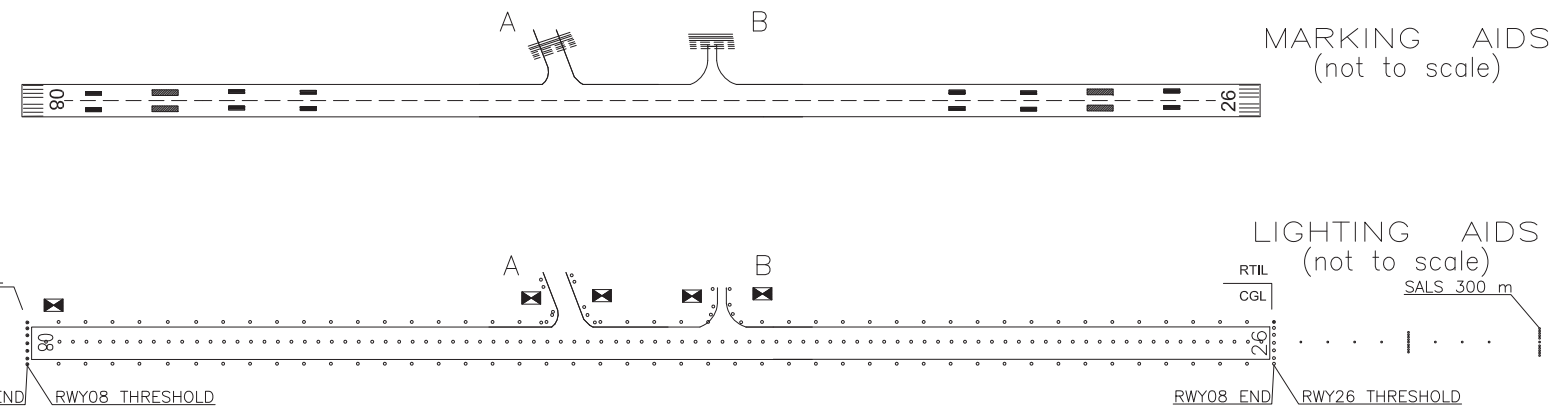
Change: RWY PCN



VAR 2° E -2005.0
Annual rate of change 4'E



REMARK:
1) PAPI RWY 08: WARNING DUE TO THE POSSIBLE PRESENCE OF MOBILE OBSTACLE IN THE LAST 200 m before the THR as reported in the AOC type A and B affecting also PAPI obstacle protection surface, caution and visual reference to that obstacle are requested when landing.
2) Take off and Landing ops RWY 08/26 with caution due to STRIP not compliant with ICAO standards.



Data provided by AST AEROSERVIZI SPA