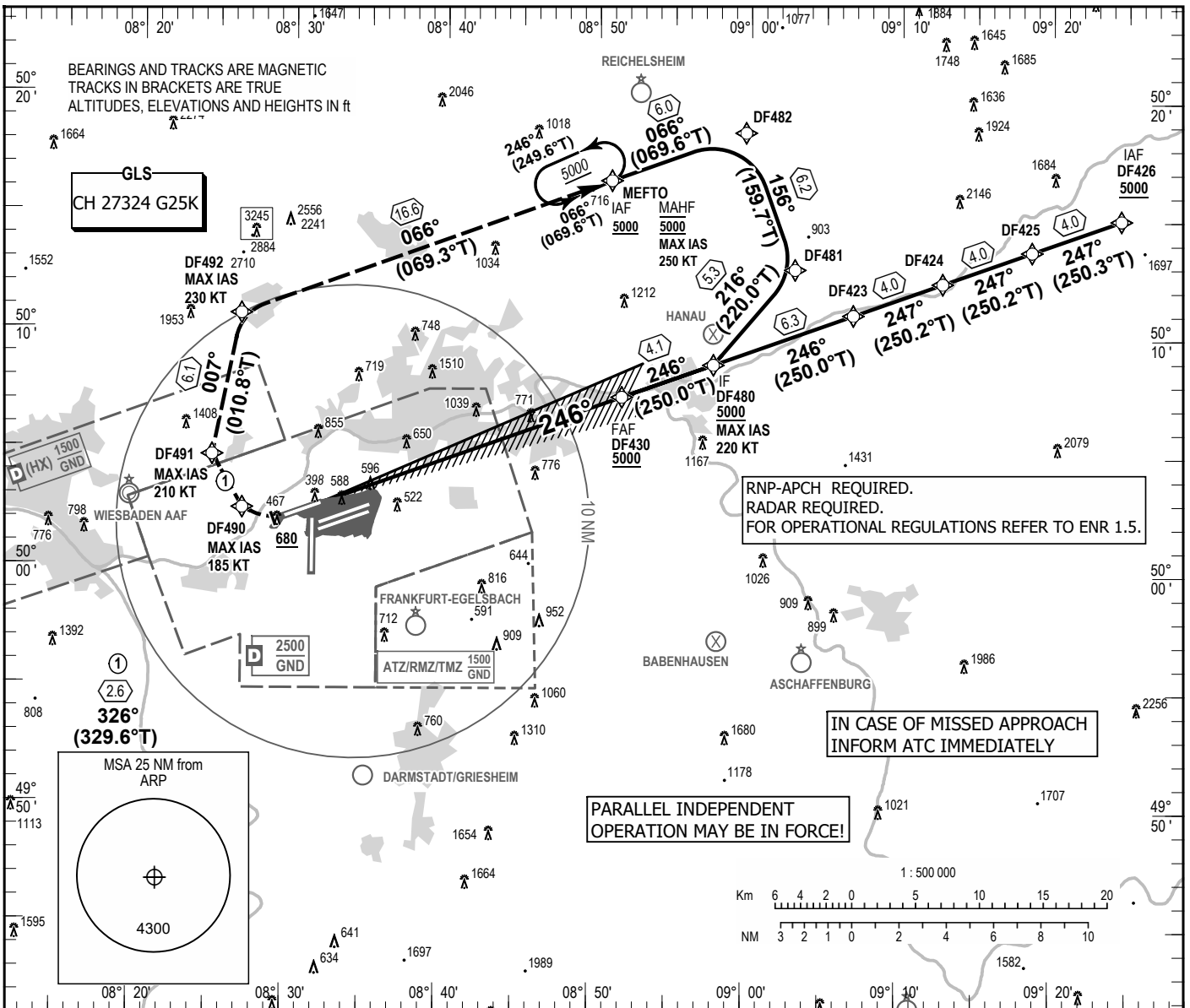


INSTRUMENT APPROACH  
CHART - ICAO

VAR 4° E  
ELEV 363  
OCH RELATED TO THR 25R ELEV 351

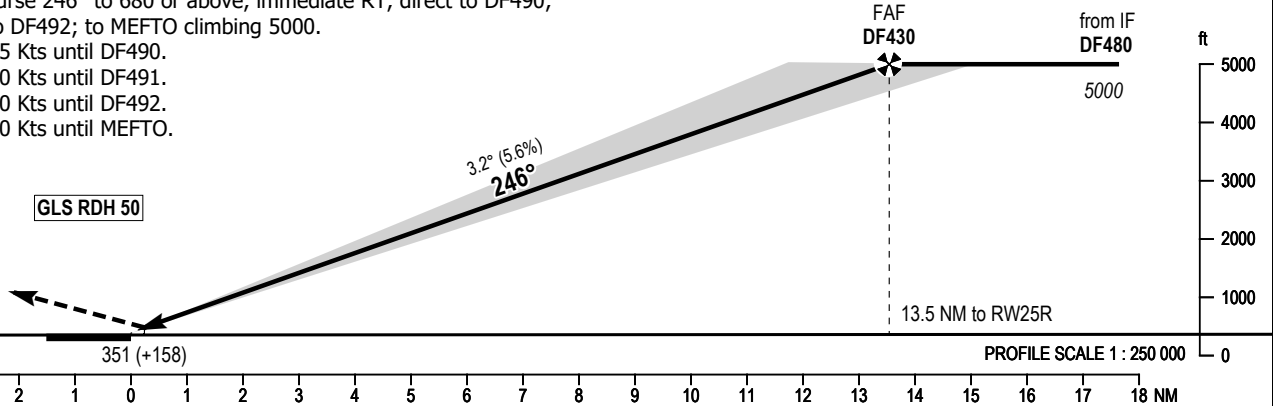
FRANKFURT ATIS	118.030	FRANKFURT GROUND	121.805
LANGEN RADAR	120.805	FRANKFURT APRON	121.855
LANGEN RADAR	125.355	FRANKFURT APRON	121.755
FRANKFURT ARRIVAL	127.280	FRANKFURT APRON	121.955
FRANKFURT TOWER	136.500		

FRANKFURT MAIN  
GLS Y CAT I & II  
RWY 25R



**MISSED APPROACH PROCEDURE**

Climb on course 246° or above, immediate RT, direct to DF490; to DF491; to DF492; to MEFTO climbing 5000.  
Max. IAS 185 Kts until DF490.  
Max. IAS 210 Kts until DF491.  
Max. IAS 230 Kts until DF492.  
Max. IAS 250 Kts until MEFTO.



OCA (OCH)	CLIMB GRAD	A	B	C	D
GLS CAT I	4.5%	530 (179)	542 (191)	551 (200)	561 (210)
	2.5%	1330 (979)	1340 (989)	1350 (999)	1360 (1009)
GLS CAT II	4.5%	439 (88)	457 (106)	468 (117)	483 (132)

Minimum Climb Gradient 4.5% (275 ft/NM) up to 2300 due to obstacle.

DIST THR	2	3	4	5	6	7	8	9	10	11	12	13
ALTITUDE	1090	1430	1770	2100	2440	2780	3120	3460	3800	4140	4480	4820

GS	kt	80	100	120	140	160	180
DF430 - THR (13.5 NM)	MIN:SEC	10:09	8:07	6:46	5:48	5:05	4:31
Rate of descent (5.6%)	ft/MIN	450	570	680	790	910	1020

Correction: Callsign, variation and missed approach revised.