

STANDARD DEPARTURE CHART - INSTRUMENT

RJDB / IKI

SID

FUKUOKA FIVE DEPARTURE

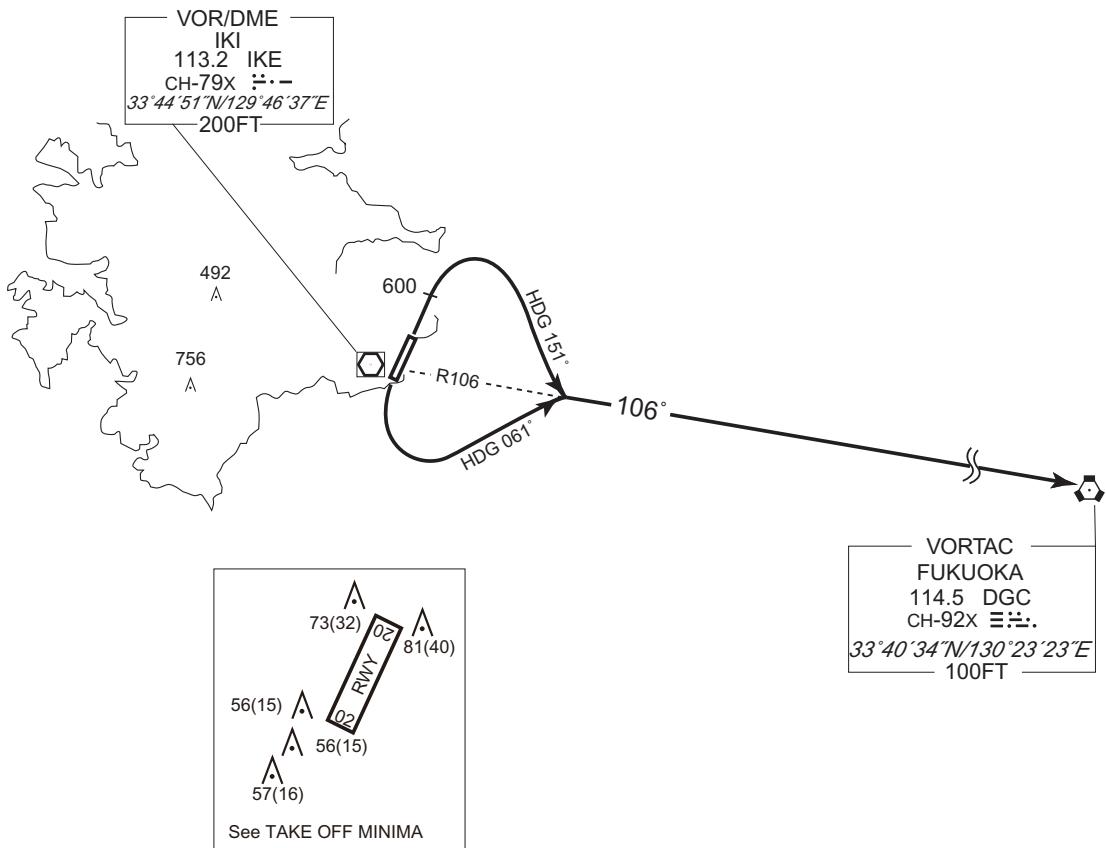
RWY 02 : Climb RWY HDG to 600FT, turn right HDG 151°...

RWY 20 : Turn left HDG 061°...

... to intercept and proceed via IKE R106 to DGC VORTAC.

Note RWY02 : 6.7% climb gradient required up to 600FT.

OBST ALT 299FT located at 0.7NM 360° FM end of RWY02.



CHANGE : PROC renamed. PROC course. OBST.

STANDARD DEPARTURE CHART - INSTRUMENT

RJDB / IKI

SID

IKI REVERSAL THREE DEPARTURE

RWY 02 : Climb RWY HDG to 1600FT, turn right,...

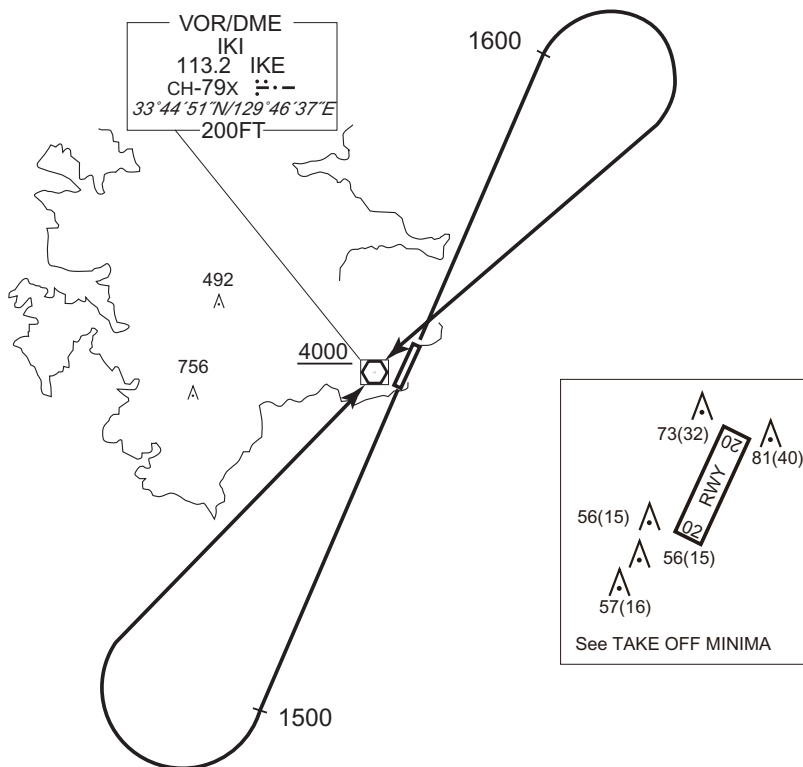
RWY 20 : Climb RWY HDG to 1500FT, turn right,...

...proceed to IKE VOR/DME.

Cross IKE VOR/DME at or above 4000FT.

Note RWY02 : 6.7% climb gradient required up to 600FT.

OBST ALT 299FT located at 0.7NM 360° FM end of RWY02.



CHANGE : OBST.