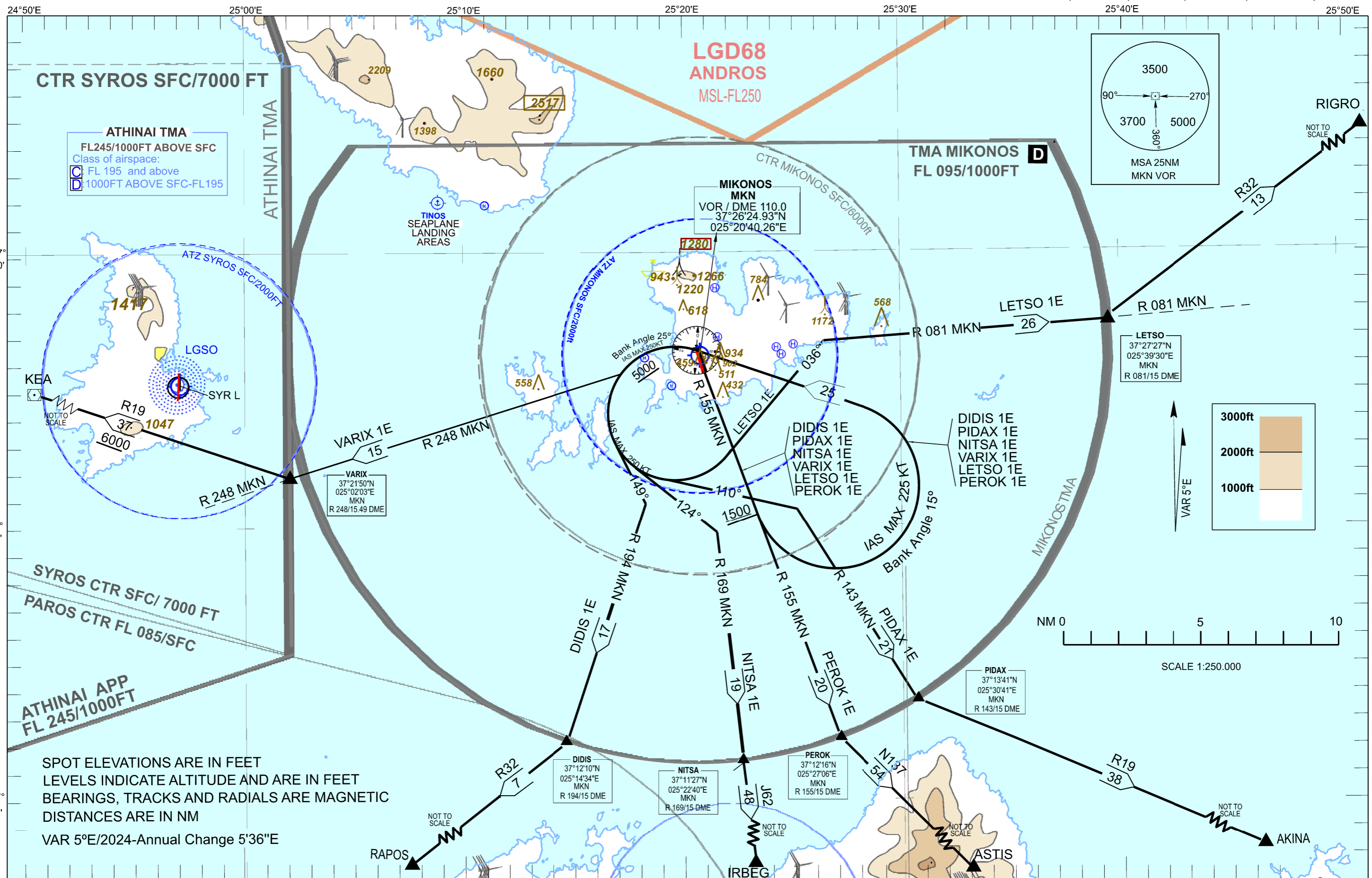


TRANSITION ALTITUDE
6000 ft

ATIS 128.855 TWR 119.875
APP 118.750

VARIX 1E, PIDAX 1E, NITSA 1E, LETSO 1E, PEROK 1E, DIDIS 1E



MIKONOS
SIDs VOR/DME RWY 16

VARIX 1E, DIDIS 1E, NITSA 1E, PEROK 1E, PIDAX 1E, LETSO 1E.

GENERAL

When for these SIDs an altitude higher than the transition altitude is designated, then ATC unit shall specify an equivalent flight level.

For SIDs VARIX 1E, DIDIS 1E, NITSA 1E, PEROK 1E, PIDAX 1E, LETSO 1E:

“Climb on R 155 MKN to 1500ft, turn left (IAS MAX 225kt, Bank angle 15⁰) to MIKONOS VOR/DME at 5000ft or above. Thence ...”

VARIX 1E

“...After MIKONOS VOR/DME turn left (IAS MAX 250kt, Bank angle 25⁰), intercept and follow R 248 MKN to VARIX (R 248 MKN/15 DME Fix) to join AWY R19”.

Total length of SID: 40nm.

DIDIS 1E

“...After MIKONOS VOR/DME turn left (IAS MAX 250kt, Bank angle 25⁰) to track 149⁰, intercept and follow R 194 MKN to DIDIS (R 194 MKN/15 DME Fix) to join AWY R32”.

Total length of SID: 42nm.

NITSA 1E

“...After MIKONOS VOR/DME turn left (IAS MAX 250kt, Bank angle 25⁰) to track 124⁰, intercept and follow R 169 MKN to NITSA (R 169 MKN/15 DME Fix) to join AWY J62”.

Total length of SID: 44nm.

PEROK 1E

“...After MIKONOS VOR/DME turn left (IAS MAX 250kt, Bank angle 25⁰) to track 110⁰, intercept and follow R 155 MKN to PEROK (R 155 MKN/15 DME Fix) to join AWY N137”.

Total length of SID: 45nm.

PIDAX 1E

“...After MIKONOS VOR/DME turn left (IAS MAX 250kt, Bank angle 25⁰) to track 110⁰, intercept and follow R 143 MKN to PIDAX (R 143 MKN/15 DME Fix) to join AWY R19.”

Total length of SID: 46nm.

LETSO 1E

“...After MIKONOS VOR/DME turn left (IAS MAX 250kt, Bank angle 25⁰) to track 036⁰, intercept and follow R 081 MKN to LETSO (R 081 MKN/15 DME Fix) to join AWY R32.”

Total length of SID: 51nm.