

ICAO - INSTRUMENT APPROACH CHART

For operational limitations in case of volcanic ash cloud see AD 2 LICB 1-1 tab 23 and ENR 2.1.2 CATANIA CTR

TWR Comiso TWR 125.275
APP Catania APP/RADAR 119.250

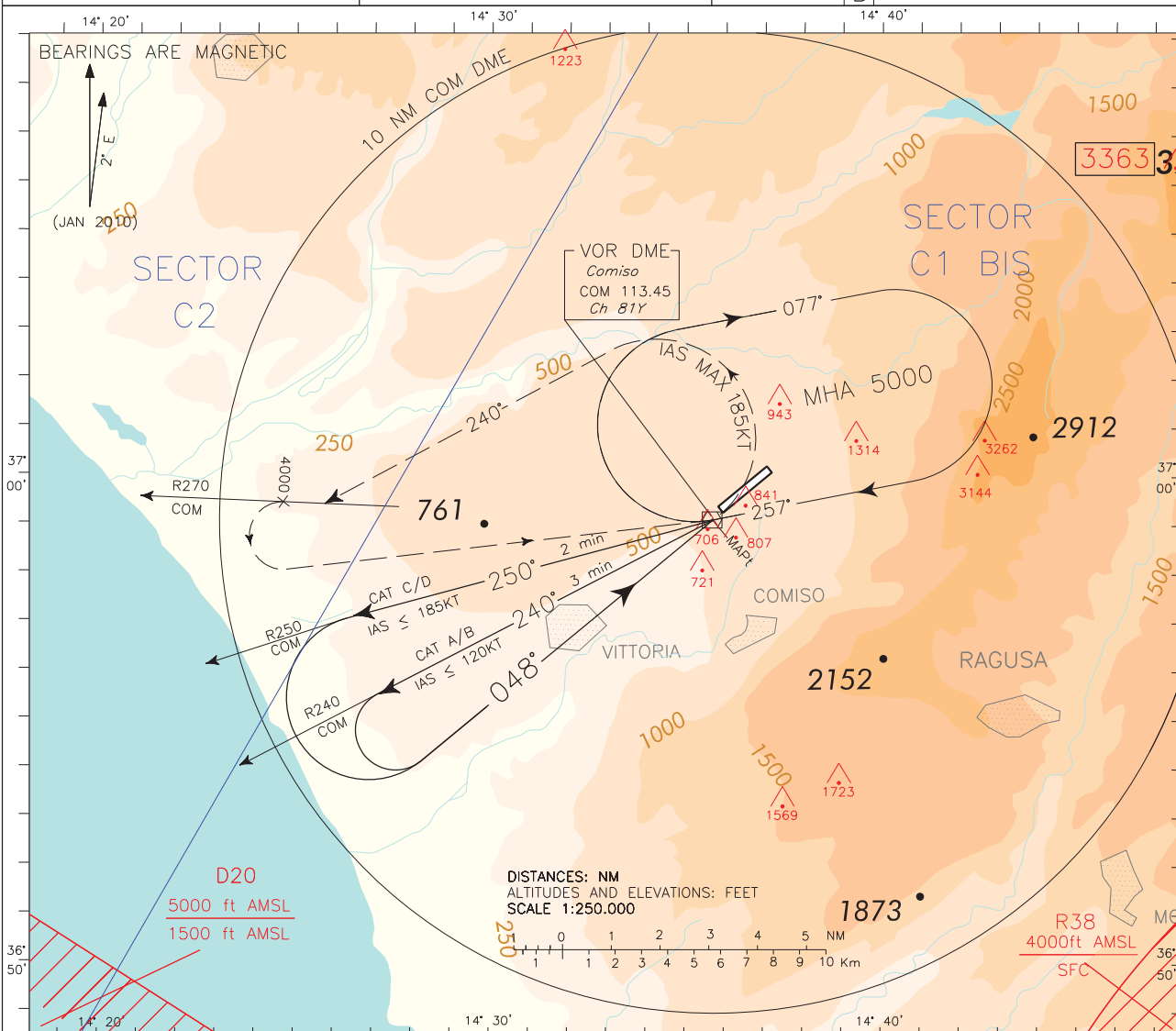
AD ELEV 756

L
I
C
B

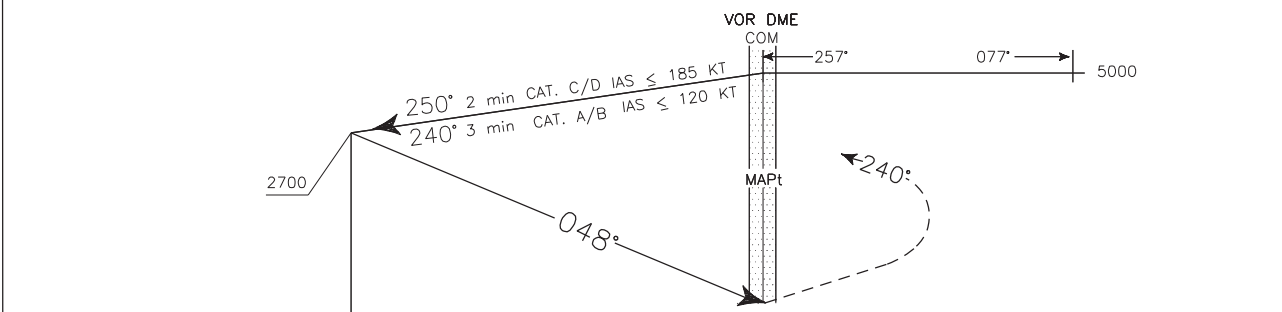
COMISO
VOR-Y RWY 05

DOC.8168-ED.5 2006 AMD.4


CHANGE: BOX FREQUENCIES UPDATED



TRANSITION ALT 7000 MISSED APPROACH: As soon as possible, turn left (IAS MAX 185KT) on TR 240°, to intercept and follow R270 COM VOR, climbing to 5000FT. At 4000FT turn left to COM VOR to be reached at 5000FT.



NM	13	12	11	10	9	8	7	6	5	4	3	2	1	0	1	2	3	4	5	6	7	8	9	NM
	THR ELEV 661																							

OCA (OCH)		A	B	C	D	(*) CIRCLING SECTOR 	GS	FT PER MIN	MNM SECT ALT	
STRAIGHT IN APPROACH	VOR	1150 (489)								
(*) CIRCLING	1400(644)	1650(894)	2050(1294)	2450(1694)		ONLY NORTH OF RWY			4800	5200

Edited by AM - CIGA