

# STANDARD ARRIVAL CHART - INSTRUMENT (STAR) - ICAO

**TRANSITION ALT**  
6000 FT

APP Milano Radar	135.900 (124.250)
TWR Villafranca TWR	118.650
ATIS Verona Arrival and Departure Information	124.130

IBCAF 3A    NEVNI 2X    OSBUL 3X  
OSTEG 2X    SRN 2F    TZO 4B

## VERONA/VILLAFRANCA (LIPX) STAR RWY04

### LEGEND

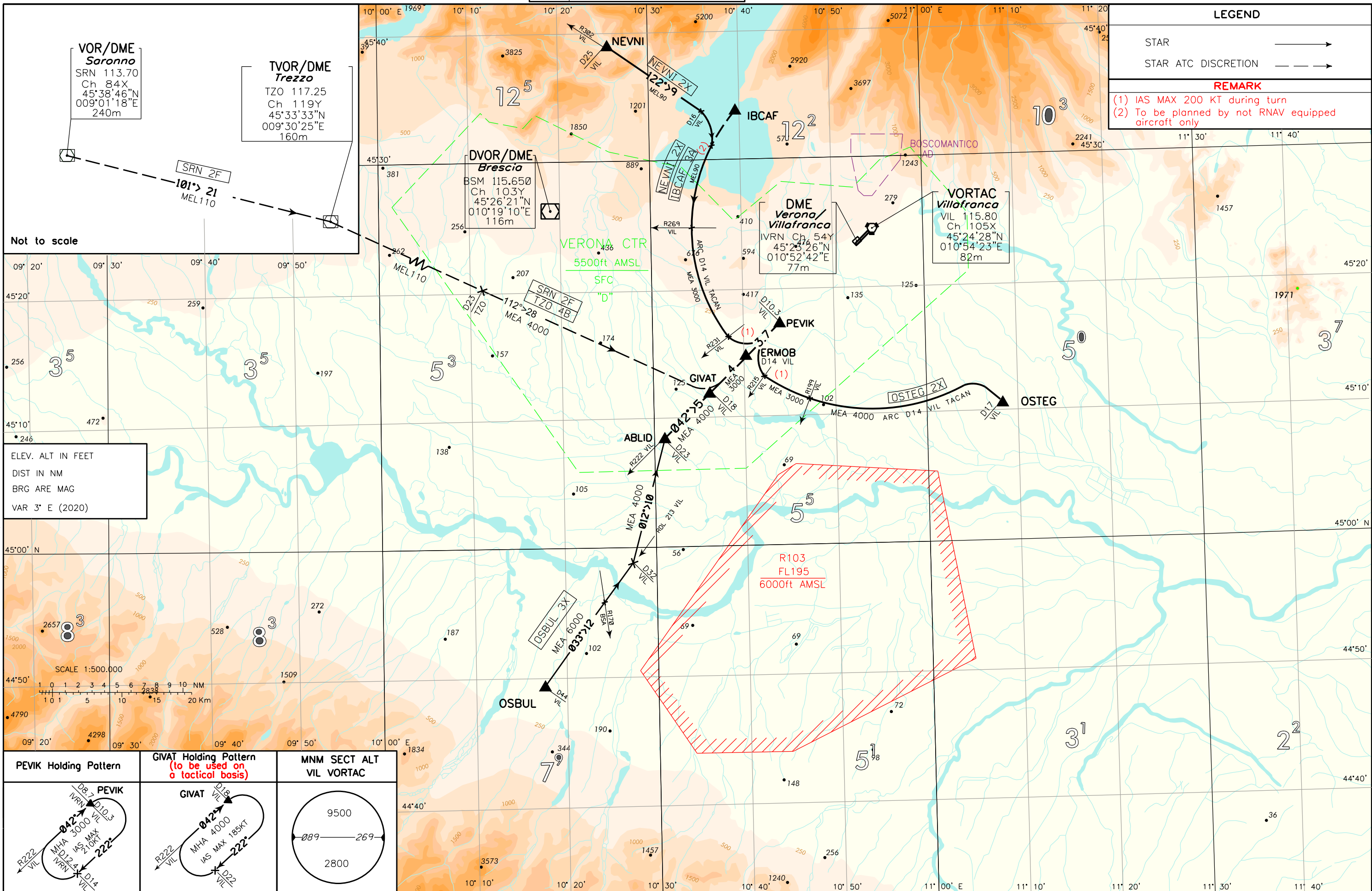
STAR

STAR ATC DISCRETION

### REMARK

- (1) IAS MAX 200 KT during turn
- (2) To be planned by not RNAV equipped aircraft only

CHANGE: TZO NDB WITHDRAWN; VERONA CTR MODIFIED; SRN 2F AND TZO 4B MODIFIED.



**VOR/DME Saronno**  
SRN 113.70  
Ch 84X  
45°38'46"N  
009°01'18"E  
240m

**TVOR/DME Trezzo**  
TZO 117.25  
Ch 119Y  
45°33'33"N  
009°30'25"E  
160m

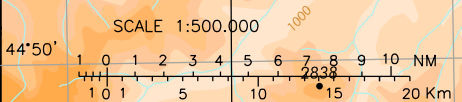
**DVOR/DME Brescia**  
BSM 115.650  
Ch 103Y  
45°26'21"N  
010°19'10"E  
116m

**DME Verona/Villafranca**  
IVRN Ch 54Y  
45°23'26"N  
010°52'42"E  
77m

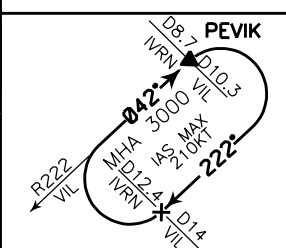
**VORTAC Villafranca**  
VIL 115.80  
Ch 105X  
45°24'28"N  
010°54'23"E  
82m

Not to scale

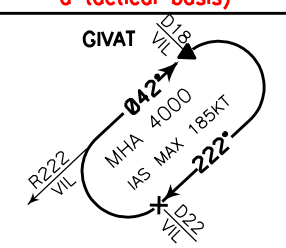
ELEV. ALT IN FEET  
DIST IN NM  
BRG ARE MAG  
VAR 3° E (2020)



**PEVIK Holding Pattern**



**GIVAT Holding Pattern (to be used on a tactical basis)**



**MNM SECT ALT VIL VORTAC**

