

STANDARD DEPARTURE CHART - INSTRUMENT

RJKB / OKIERABU

SID

ERABU REVERSAL TWO DEPARTURE

RWY04 : Climb RWY HDG to 500FT, turn right, via ONC R090 to ONC 12.0DME, turn right, via ONC R110 to ONC VORTAC.

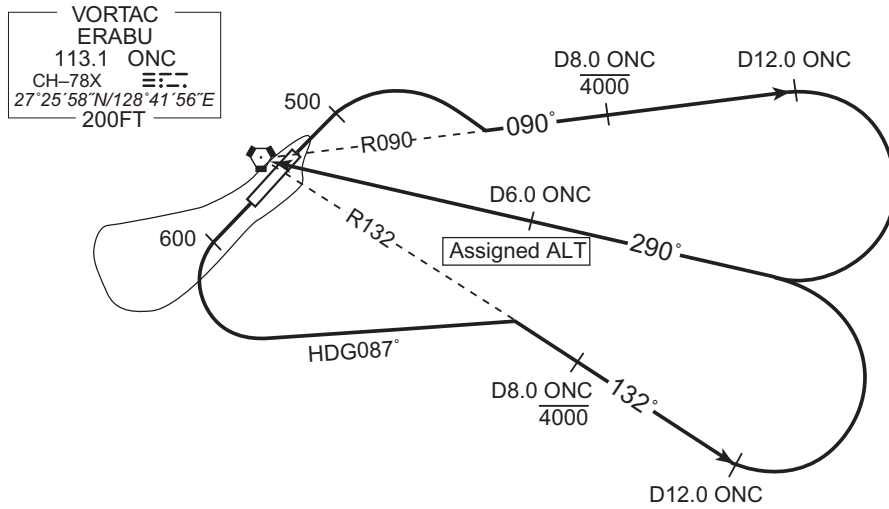
Cross ONC R090/8.0DME at or below 4000FT, cross ONC R110/6.0DME at assigned altitude.

RWY22 : Climb RWY HDG to 600FT, turn left HDG087 to intercept and proceed via ONC R132 to ONC 12.0DME, turn left, via ONC R110 to ONC VORTAC.

Cross ONC R132/8.0DME at or below 4000FT, cross ONC R110/6.0DME at assigned altitude.

Note RWY22 : 5.0% climb gradient required up to 600FT.

OBST ALT 145FT located at 0.2NM 257° FM end of RWY22.



CHANGE : Description of PROC name.