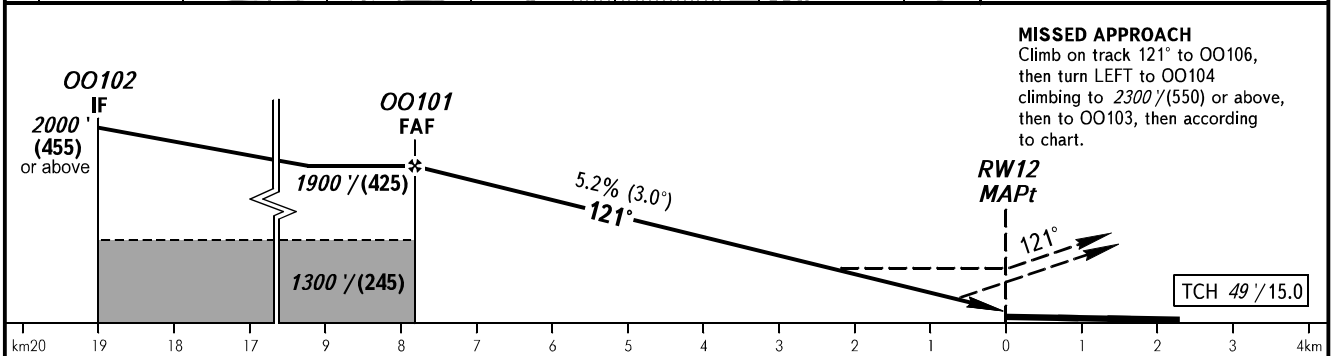
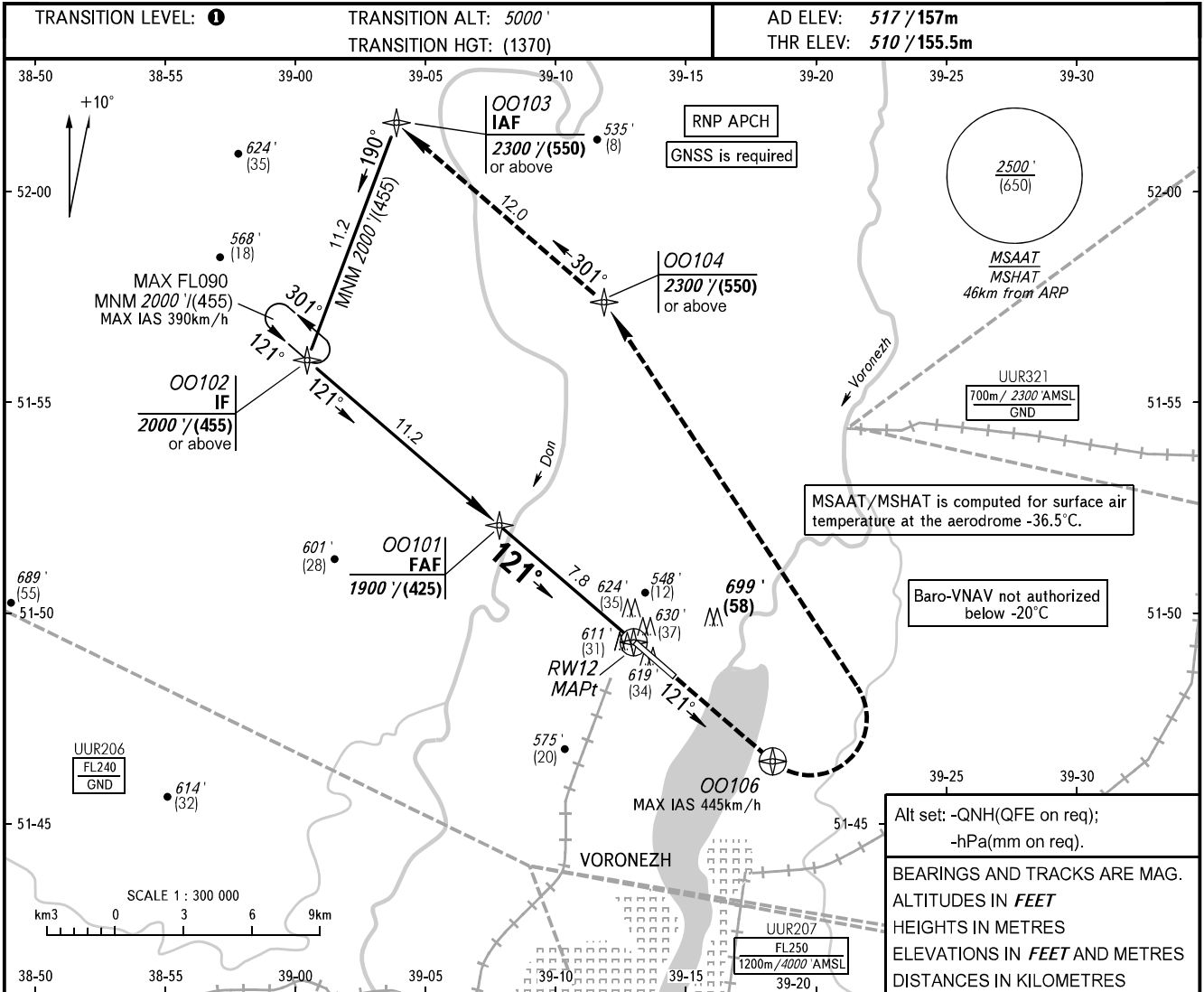


**INSTRUMENT  
APPROACH  
CHART - ICAO**

TOWER **118.300**

**VORONEZH, RUSSIA**  
CHERTOVITSKOYE  
RNAV RWY 12



**MISSED APPROACH**  
Climb on track 121° to OO106, then turn LEFT to OO104 climbing to 2300'/(550) or above, then to OO103, then according to chart.

Alt set: -QNH(QFE on req);  
-hPa(mm on req).  
BEARINGS AND TRACKS ARE MAG.  
ALTITUDES IN FEET  
HEIGHTS IN METRES  
ELEVATIONS IN FEET AND METRES  
DISTANCES IN KILOMETRES

OCA(H)		A	B	C	D							
Straight-in Approach	LNAV	860' (345')/(110)	870' (355')/(110)	880' (365')/(115)	880' (365')/(115)							
	LNAV/VNAV	759' (249')/(80)	772' (262')/(80)	780' (270')/(85)	790' (280')/(90)							
Circling		1000' (478')/(150)	1010' (493')/(155)	1130' (606')/(185)	1210' (689')/(215)							
GROUND SPEED	km/h	150	180	210	240	270	300	330	360	390	420	450
RATE OF DESCENT	m/s	2.2	2.6	3.0	3.5	3.9	4.3	4.8	5.2	5.6	6.1	6.5
	ft/min	427	512	597	682	768	853	938	1024	1109	1194	1280

**1** TRANSITION LEVEL:  
- FL060 when QNH is 1013 hPa (760mm mercury column) or above;  
- FL070 when QNH is 977 hPa (733mm mercury column) or above, but less than 1013 hPa (760mm mercury column);  
- FL080 when QNH is less than 977 hPa (733mm mercury column).

CHANGE: New chart