

STANDARD DEPARTURE CHART - INSTRUMENT

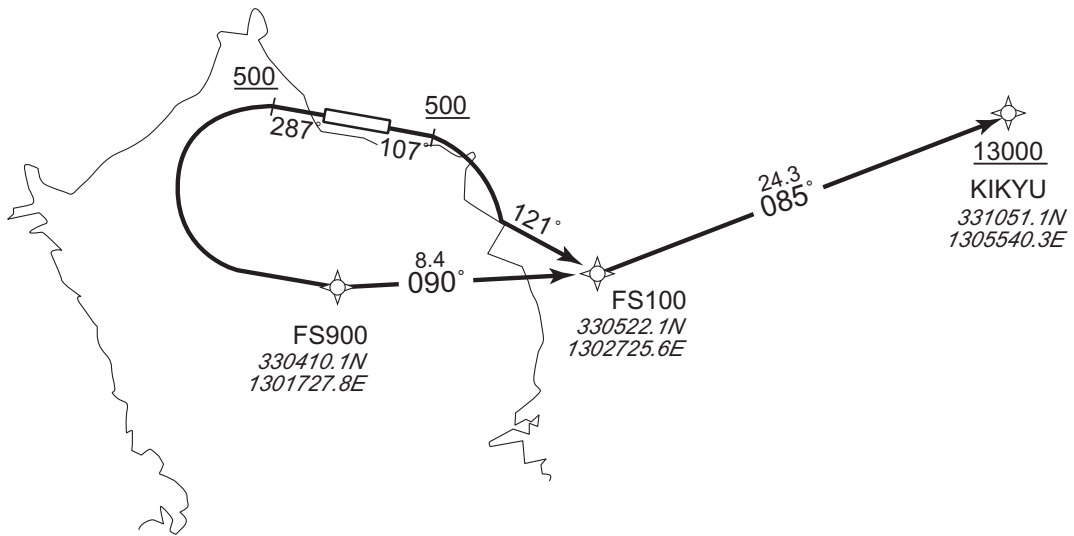
RJFS / SAGA RNAV SID

BALLOON TWO DEPARTURE

RNP1

Note GNSS required.

VAR 8° W



CHANGE : PROC course. PROC renamed. VAR.

RWY11 : Climb on HDG107° at or above 500FT, turn right to FS100 on course 121°, to KIKYU at or above 13000FT.

RWY29 : Climb on HDG287° at or above 500FT, turn left direct to FS900, to FS100, to KIKYU at or above 13000FT.

NOTE RWY29 : 3.5% climb gradient required up to 500FT.

STANDARD DEPARTURE CHART - INSTRUMENT

RJFS / SAGA

RNAV SID

BALLOON TWO DEPARTURE

RWY11

Serial Number	Path Descriptor	Waypoint Identifier	Fly Over	Course °M(°T)	Magnetic Variation	Distance (NM)	Turn Direction	Altitude (FT)	Speed (KIAS)	Vertical Angle	Navigation Specification
001	VA	-	-	107 (099.3)	-7.9	-	-	+500	-	-	RNP1
002	CF	FS100	-	121 (113.2)	-7.9	-	-	-	-	-	RNP1
003	TF	KIKYU	-	085 (076.8)	-7.9	24.3	-	+13000	-	-	RNP1

RWY29

Serial Number	Path Descriptor	Waypoint Identifier	Fly Over	Course °M(°T)	Magnetic Variation	Distance (NM)	Turn Direction	Altitude (FT)	Speed (KIAS)	Vertical Angle	Navigation Specification
001	VA	-	-	287 (279.3)	-7.9	-	-	+500	-	-	RNP1
002	DF	FS900	-	-	-7.9	-	L	-	-	-	RNP1
003	TF	FS100	-	090 (081.8)	-7.9	8.4	-	-	-	-	RNP1
004	TF	KIKYU	-	085 (076.8)	-7.9	24.3	-	+13000	-	-	RNP1

CHANGE : PROC course. PROC renamed. VAR.