

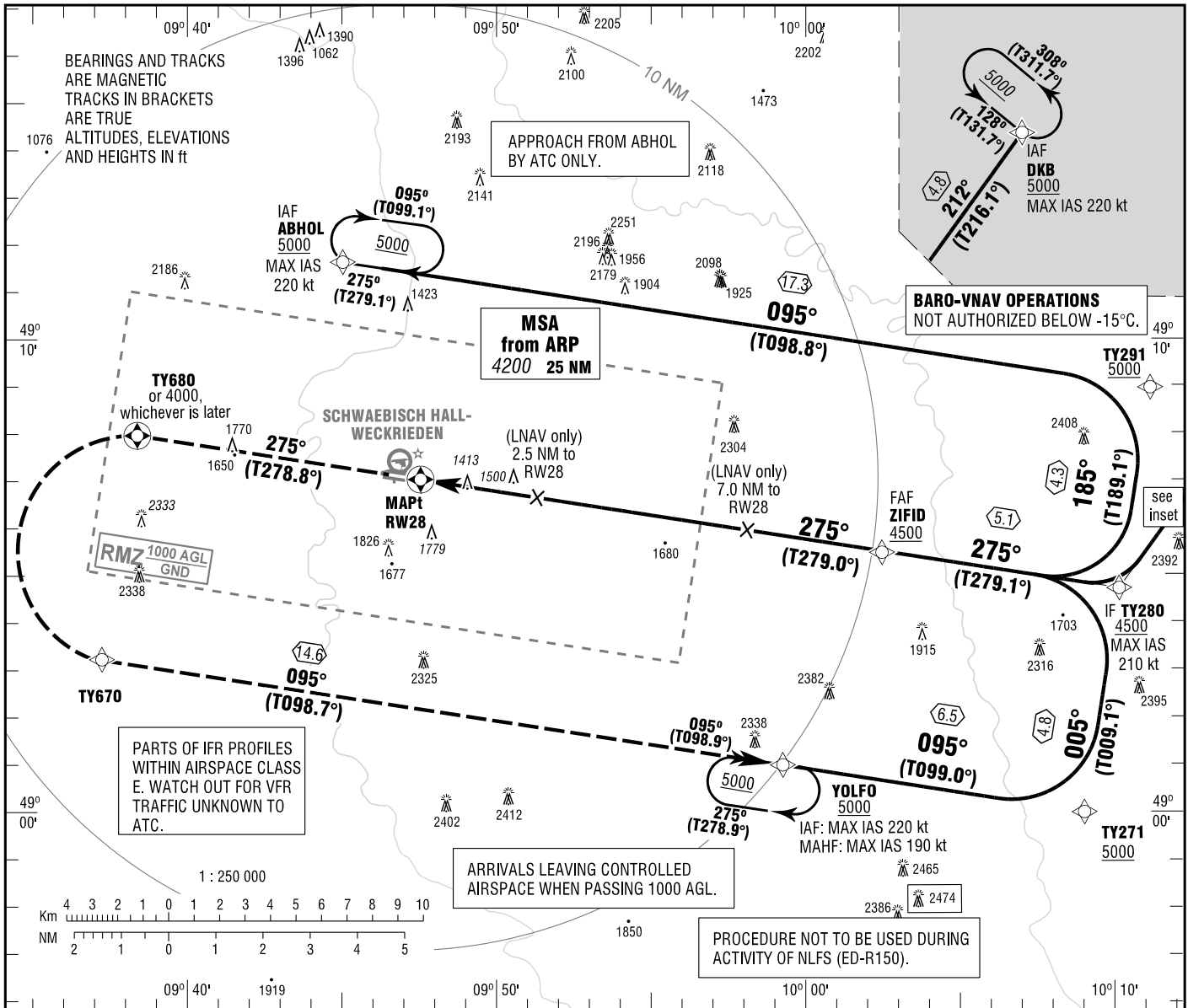
INSTRUMENT
APPROACH
CHART - ICAO

VAR 4° E

ELEV 1310
OCH RELATED TO
THR 28 ELEV 1297

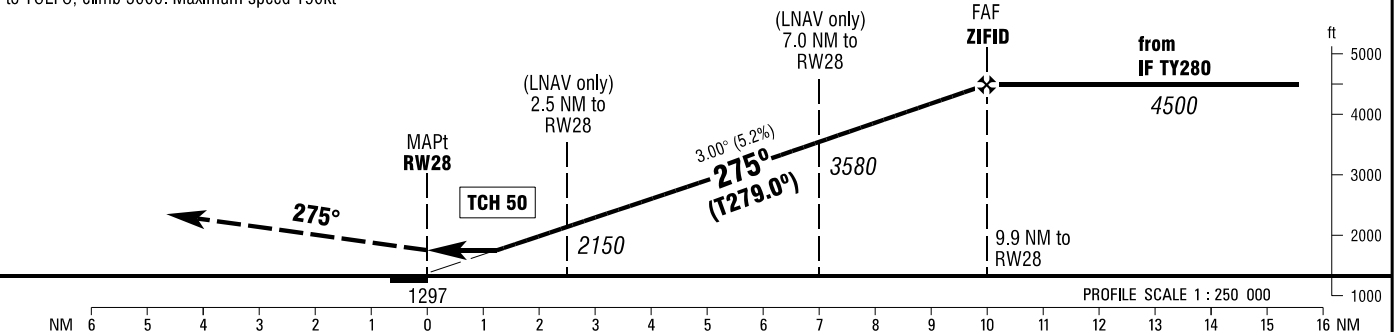
SCHWAEBISCH HALL ATIS 133.880
LANGEN RADAR 125.050
SCHWAEBISCH HALL INFORMATION 129.230

SCHWAEBISCH HALL
RNP RWY 28
EGNOS CH 56890 E28A



MISSED APPROACH PROCEDURE

Climb on course 275° to TY680 or 4000, whichever is later, LT direct to TY670, to YOLFO, climb 5000. Maximum speed 190kt



OCA (OCH)	A	B	C
LNAV	1750 (450)	1750 (450)	1750 (450)
LNAV / VNAV	1609 (312)	1620 (323)	1640 (343)
LPV	1547 (250)	1547 (250)	1547 (250)

DIST THR / RW28	2	3	4	5	6	7	8	9
ALTITUDE	1990	2310	2630	2940	3260	3580	3900	4220

Timing not authorized for defining the MAPt.

GS	kt	80	100	120	140
ZIFID - RW28 (9.9 NM)	MIN:SEC	7:25	5:56	4:57	4:15
Rate of descent (5.2%)	ft / MIN	420	530	640	740

Correction: Revised.