

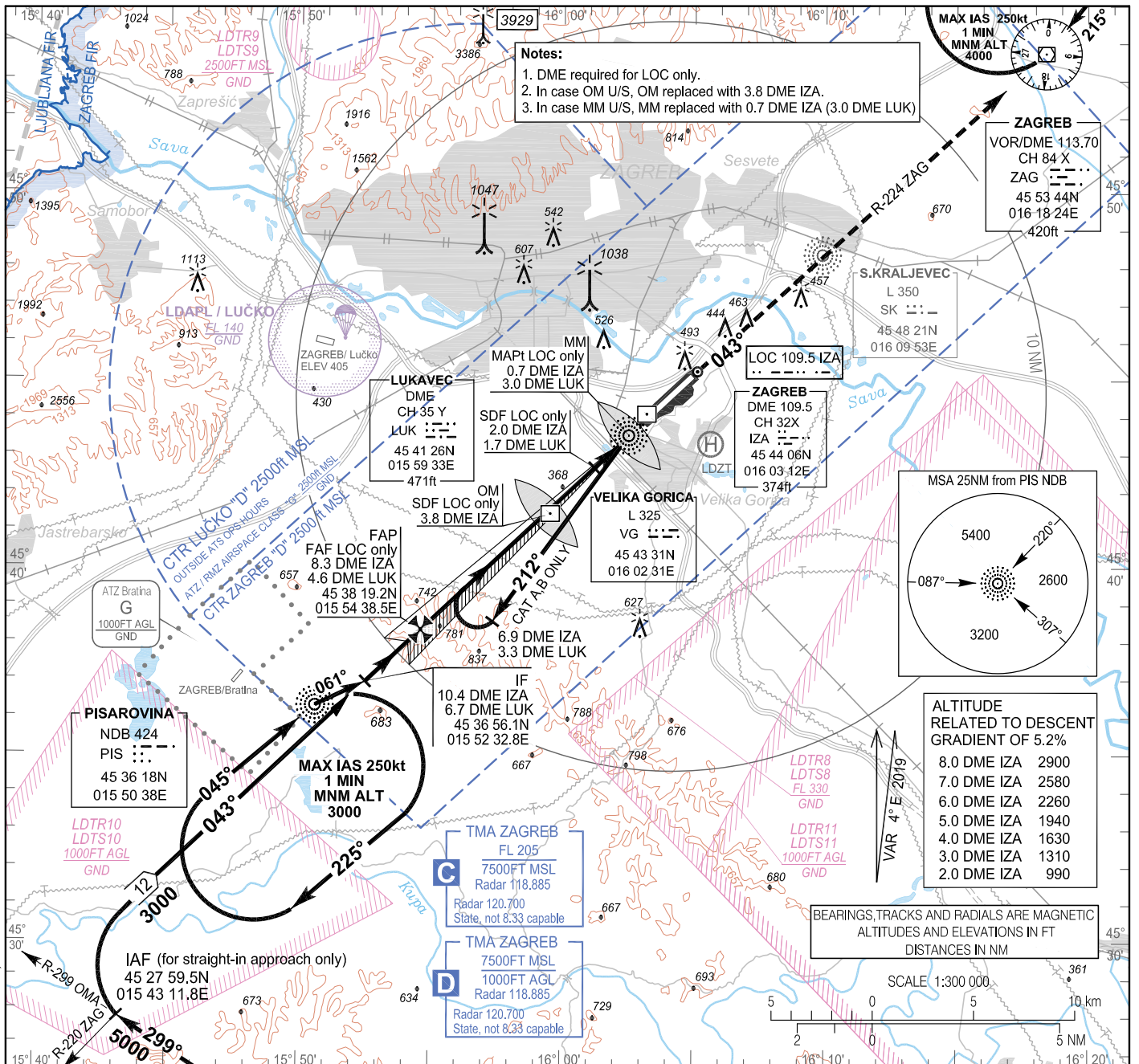
INSTRUMENT APPROACH
CHART-ICAO

AD ELEV 353
HEIGHTS RELATED
TO THR 04 ELEV 353

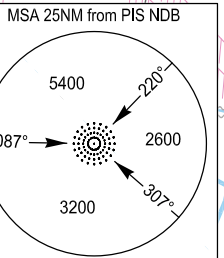
ZAGREB ATIS 124.575
ZAGREB RADAR 118.885
ZAGREB RADAR 120.700 State, not 8.33 capable
ZAGREB TOWER 118.300

ZAGREB / Franjo Tuđman (LDZA)

ILS y or LOC y RWY 04 CAT I/II/III



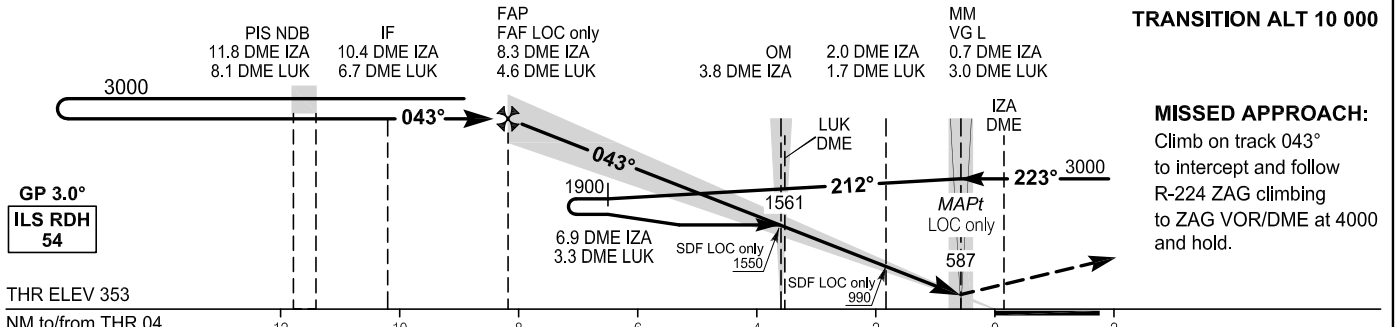
- Notes:**
1. DME required for LOC only.
 2. In case OM U/S, OM replaced with 3.8 DME IZA.
 3. In case MM U/S, MM replaced with 0.7 DME IZA (3.0 DME LUK)



ALTITUDE RELATED TO DESCENT GRADIENT OF 5.2%

8.0 DME IZA	2900
7.0 DME IZA	2580
6.0 DME IZA	2260
5.0 DME IZA	1940
4.0 DME IZA	1630
3.0 DME IZA	1310
2.0 DME IZA	990

BEARINGS, TRACKS AND RADIALS ARE MAGNETIC
ALTITUDES AND ELEVATIONS IN FT
DISTANCES IN NM



MISSED APPROACH:
Climb on track 043° to intercept and follow R-224 ZAG climbing to ZAG VOR/DME at 4000 and hold.

THR ELEV 353
NM to/from THR 04

OCA(H)	A	B	C	D
ILS CAT I press. altim.	498 (145)	508 (155)	521 (168)	534 (181)
ILS CAT II radio. altim.	413 (60)	419 (66)	429 (76)	439 (86)
LOC only	680 (330)			
Circling	790 (440)	850 (500)	950 (600)	1050 (700)

GS (kt)	70	90	100	120	140	160	180
Rate of descent (ft / min)	372	478	531	637	743	850	956

Note: Circling for ACFT CAT B, C and D NW of aerodrome not allowed

Change: ZAGREB RADAR frequency; Parachuting zone updated; Heliport LDZT added; Editorial.

ZAGREB / Franjo Tuđman (LDZA)

ILS y or LOC y RWY 04 CAT I/II/III

AERONAUTICAL DATABASE REQUIREMENTS			
Conventional procedure essential fixes/points			
ILS y or LOC y RWY 04			
LOC only - final approach descent angle:		3.00°	
Fix identification	Coordinates	True bearing or ARC distance providing track	True bearing or distance providing intersection
IAF (PIS NDB)	45 36 18.10N 015 50 38.39E	-	-
IAF (for straight-in approach only)	45 27 59.5N 015 43 11.8E	303.94° (OMA VOR)	224.00° (ZAG VOR)
IF	45 36 56.1N 015 52 32.8E	046.78° (IZA LOC)	10.35 DME IZA 6.66 DME LUK
FAF LOC only	45 38 19.2N 015 54 38.5E	046.78° (IZA LOC)	8.33 DME IZA 4.64 DME LUK
SDF LOC only (OM 04)	45 41 26.29N 015 59 24.06E	046.78° (IZA LOC)	3.77 DME IZA
SDF LOC only	45 42 39.7N 016 01 13.1E	046.78° (IZA LOC)	2.00 DME IZA 1.70 DME LUK
MAPt LOC only (MM 04)	45 43 31.45N 016 02 31.71E	046.78° (IZA LOC)	0.74 DME IZA 2.96 DME LUK

Change: ZAGREB RADAR frequency; Parachuting zone updated; Heliport LDZT added; Editorial.