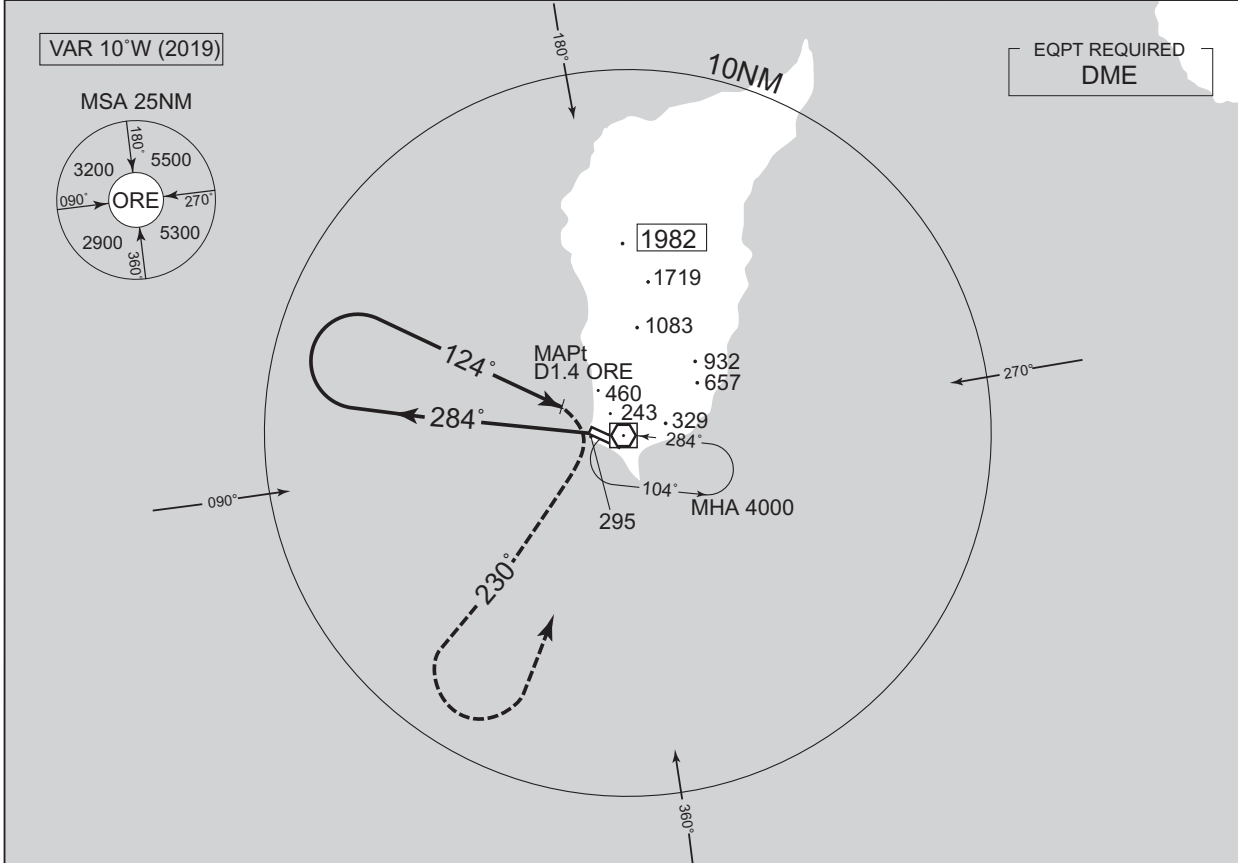


INSTRUMENT APPROACH CHART

RJEO / OKUSHIRI

VOR RWY13

<p>TOKYO CONTROL 119.3 – 276.5 134.25 – 260.4</p>	<p>OKUSHIRI VOR/DME 109.85 ORE CH-35Y 42°04'13"N / 139°26'36"E</p>	<p>OKUSHIRI RADIO 122.7 AFIS provided by New Chitose Airport Office</p>	<p>NO RADAR</p>
-----------------------------------------------------------	--------------------------------------------------------------------------------	-------------------------------------------------------------------------------------	-----------------



Remain within ORE 10.0DME

MISSED APPROACH
Turn right, climb to 3000FT or above via ORE R230, turn left direct to ORE VOR/DME within ORE 10.0DME and hold at 4000FT. Contact OKUSHIRI RADIO.

MINIMA		THR elev. 180	AD elev. 161	
CAT			CIRCLING	
	MDA(H)	CMV	MDA(H)	VIS
A	760 (599)	1500	760 (599)	1600
B		2000		2400
C	-	-	-	-
D	-	-	-	-

Circling to SOUTH side of RWY only.

CHANGE : ATC call sign.