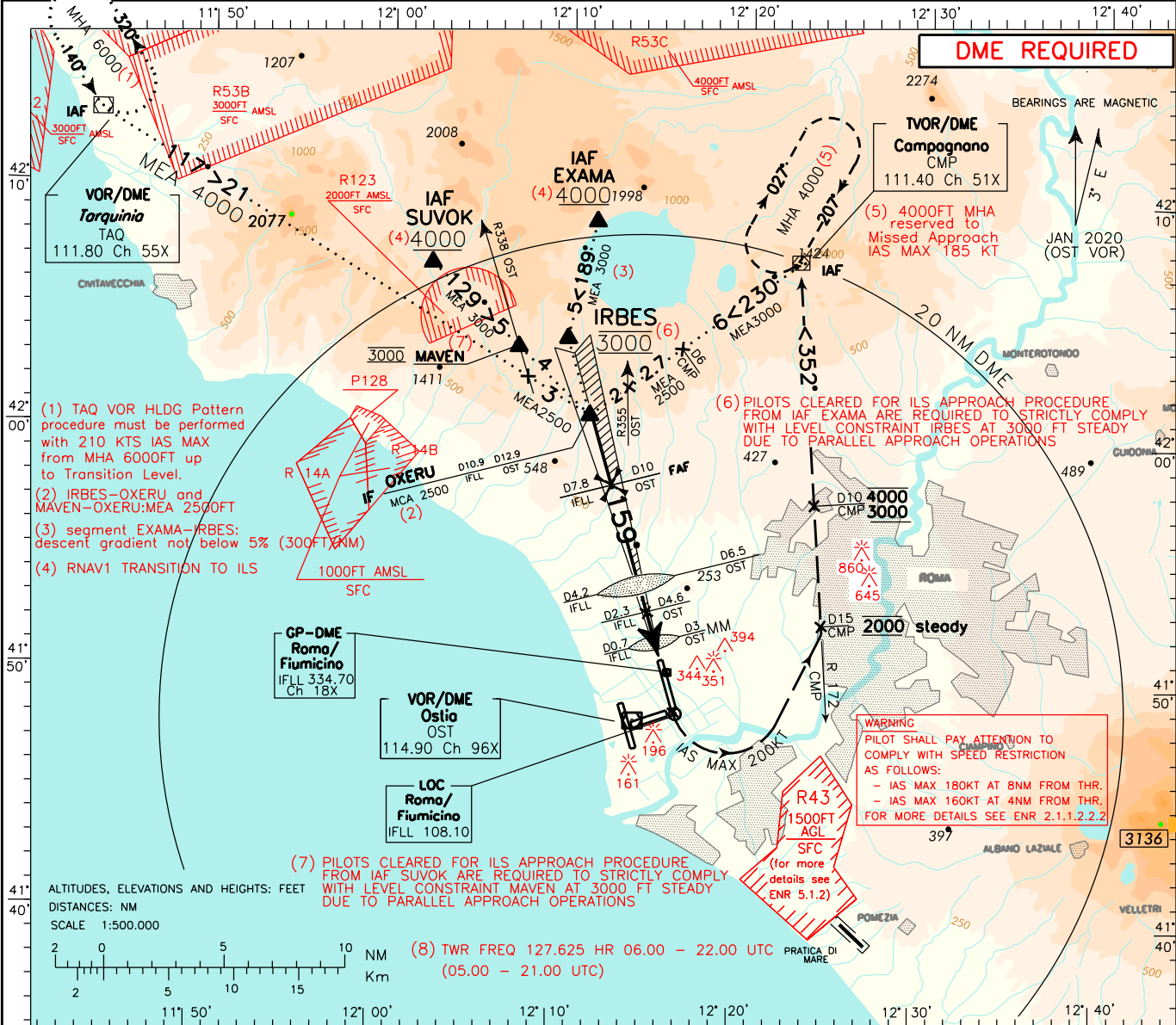


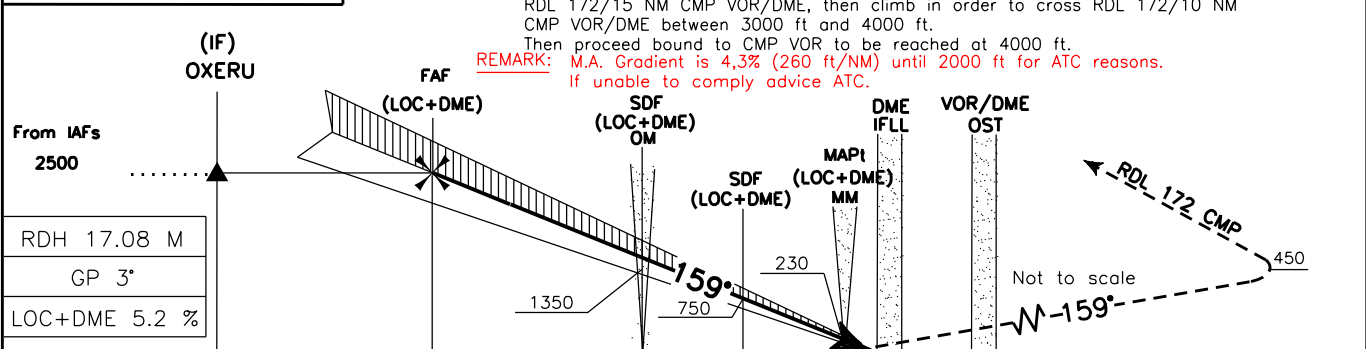
ICAO - INSTRUMENT APPROACH CHART

APP	Roma Arrivals Roma Director	125.500 (127.950) 131.250 (119.200)	AD ELEV	14	L I R F	ROMA/FIUMICINO ILS (Cat.II) or LOC W RWY 16L
TWR	Fiume TWR (8)	127.625 (118.700)				
ATIS	Fiume Arrival Information	126.125				

DOC. 8168 ED.6 - 2014 - AMDT 7
 CHANGE: TWR FREQ MODIFIED; REMARK 8 ADDED.



TRANSITION ALT 6000 MISSED APPROACH: Proceed on RWY heading 159° climbing to 4000 ft; at 450 ft, not before THR 16L, turn left (IAS MAX 200 kt) to join RDL 172 CMP VOR. Maintain 2000 ft until point RDL 172/15 NM CMP VOR/DME, then climb in order to cross RDL 172/10 NM CMP VOR/DME between 3000 ft and 4000 ft. Then proceed bound to CMP VOR to be reached at 4000 ft.



IFLL DME	D10.9	D7.8	D4.2	D2.3	D0.7	THR Elev 14	IFLL DME
NM	11	10	9	8	7	6	5

STRAIGHT IN APPROACH	ILS CAT I	269 (255)	281 (267)	289 (275)	300 (286)	FT per MIN	GS	FAF-OM	OM-MM	MNM SECT ALT OST
	ILS CAT II	170 (156)	180 (166)	185 (171)	200 (186)					
CIRCLING	LOC	420 (406)				425	80	2 : 42	2 : 38	
		800 (786)	900 (886)		530	100	2 : 10	2 : 06		
					635	120	1 : 48	1 : 45		
					745	140	1 : 33	1 : 30		
					850	160	1 : 21	1 : 19		