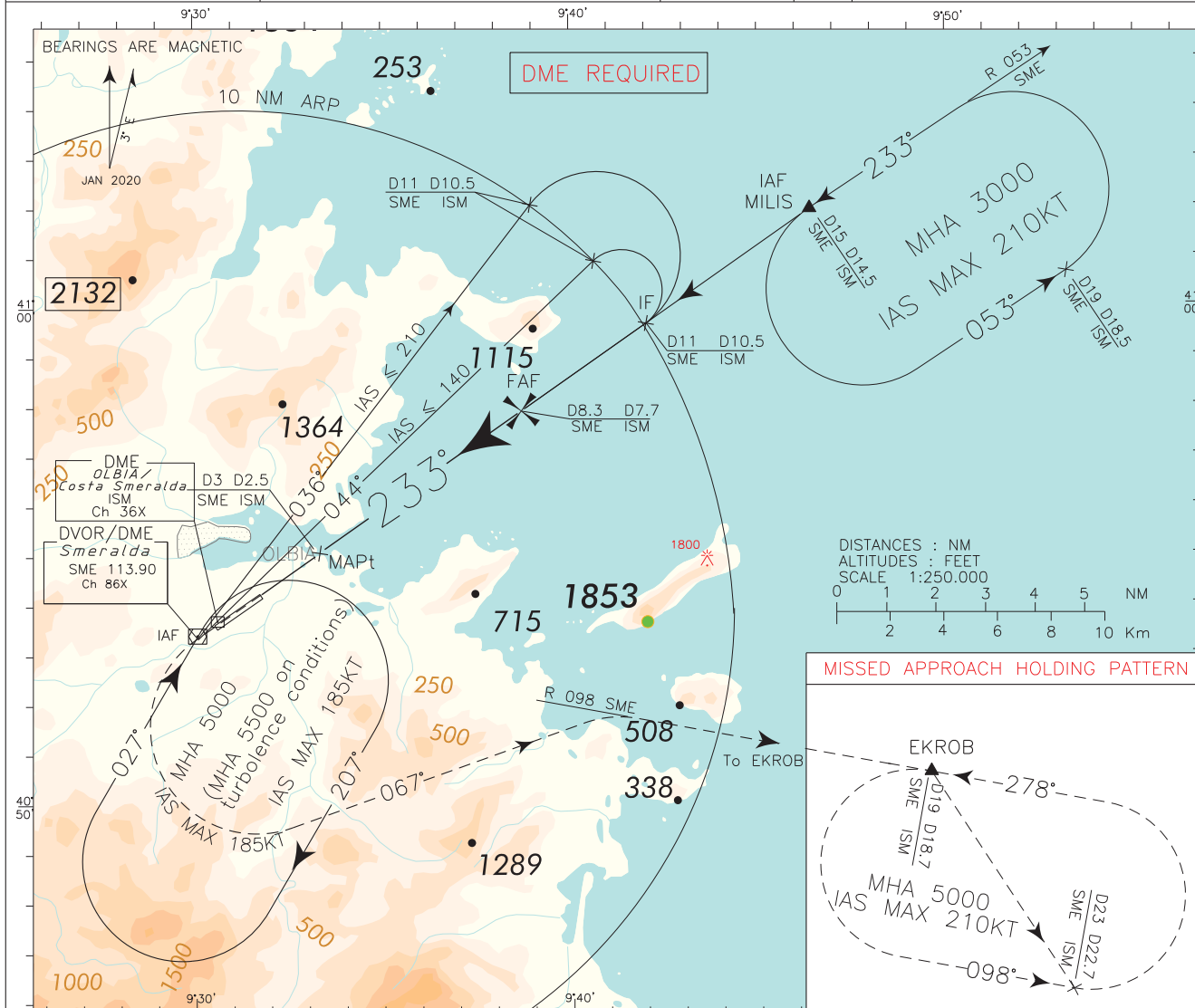


ICAO - INSTRUMENT APPROACH CHART

DOC 8168 ED 6 - 2014 - AMDT 8

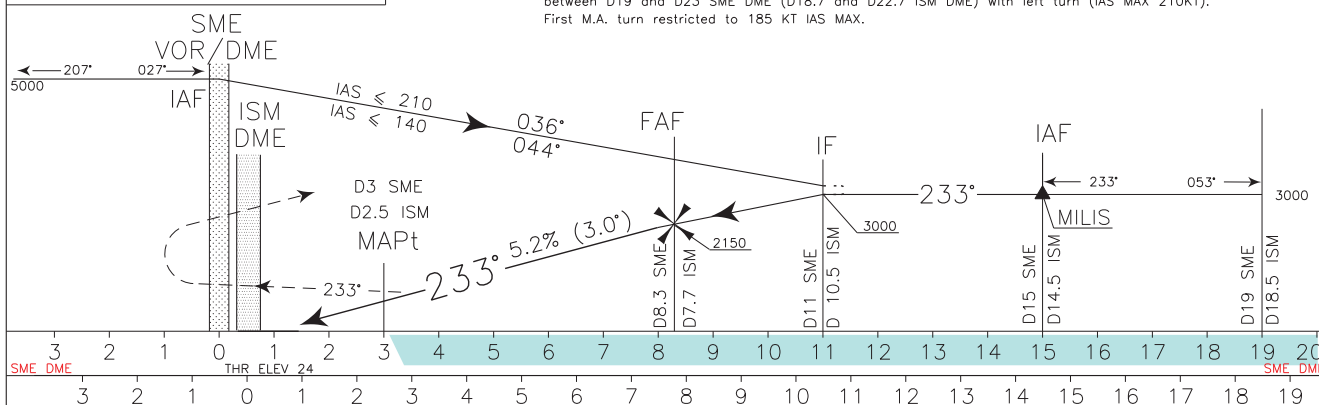
CHANGE: REVISED AND RENAMED CHART

APP Roma Radar 125.950 (127.125)	AD ELEV 37	L E O	OLBIA/ COSTA SMERALDA VOR RWY 23
TWR Olbia TWR 118.975 Olbia arrival and ATIS departure information 113.900			



TRANSITION ALT 6000

MISSED APPROACH: At D3 SME DME (2.5 ISM DME) proceed on MAG TR 233° and climb to 5000 ft. Over SME VOR/DME turn left on MAG TR 067° to join RDL 098 SME VOR to EKROB. Hold on RDL 098 SME VOR (inbound track 278°) between D19 and D23 SME DME (D18.7 and D22.7 ISM DME) with left turn (IAS MAX 210KT). First M.A. turn restricted to 185 KT IAS MAX.



STRAIGHT IN APPROACH	OCA(OCH)				CIRCLING SECTORS	GS	FT PER MIN	FAF-MAPT	MAPt-THR	DME SME	ALT (HGT)	MNM SECT ALT
	A	B	C	D				5.3 NM	1.25 NM			
VOR	850 (826)				<p>WARNING: DURING NIGHT AND IN IMC CONDITIONS CIRCLING IS FORBIDDEN</p>	80	425	3 : 59	0 : 56	8	2060 (2036)	
DME						100	530	3 : 11	0 : 45	7	1740 (1716)	
						120	635	2 : 39	0 : 37	6	1420 (1396)	
						140	745	2 : 16	0 : 32	5	1120 (1096)	
						160	850	1 : 59	0 : 28	4		
CIRCLING (CIRCLING (**))	1400 (1363) 1600 (1563) 2030 (1993)											