


LOC/DME I-SNA 111.75 Chan 54(Y)	APP CRS 196°	Rwy Idg TDZE Apt Elev	5700 54 56
----------------------------------------------	------------------------	-----------------------------	---------------------------------------

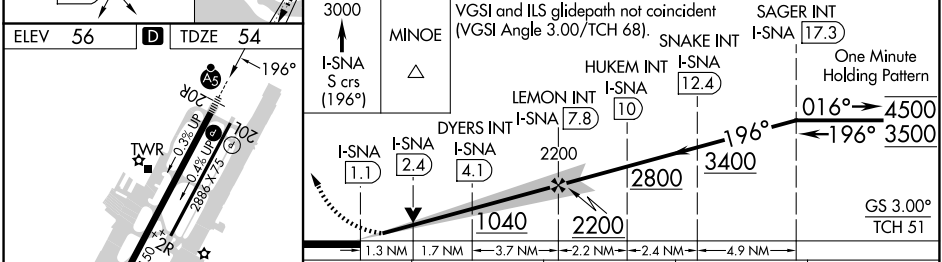
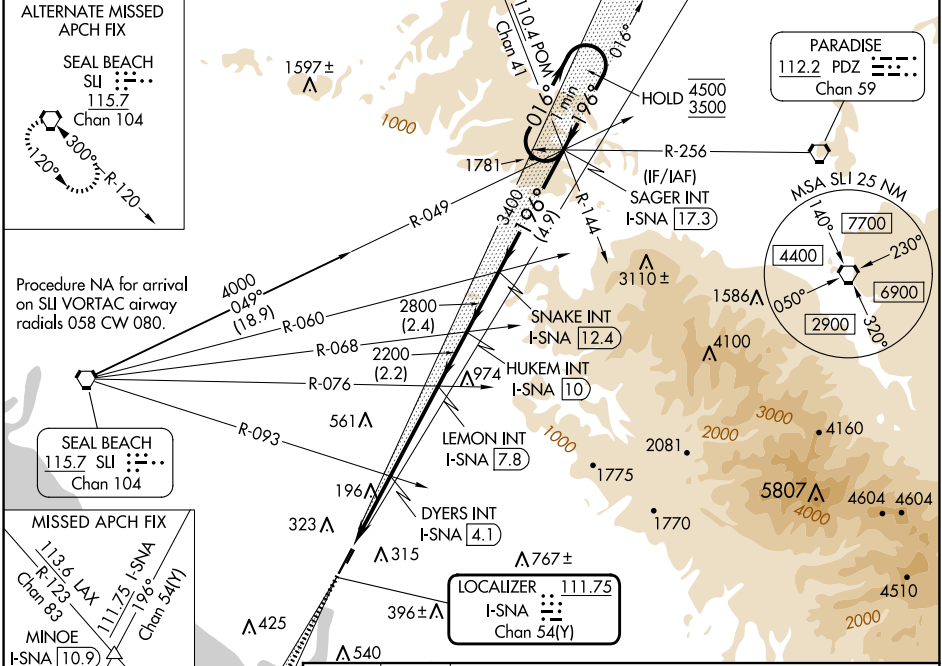
ILS or LOC RWY 20R

JOHN WAYNE/ORANGE COUNTY (SNA)

⚠ Circling Rwy 20L NA at night.
⚠ *RVR 1800 authorized with the use of FD or AP or HUD to DA.

MALSR 
MISSED APPROACH: Climb to 3000 on I-SNA LOC south course (196°) to MINOE INT/I-SNA 10.9 DME.

D-ATIS 126.0	SOCAL APP CON 121.3 263.1	JOHN WAYNE TOWER * 126.8 (CTAF) 343.625	GND CON 120.8	CLNC DEL 118.0	CPDLC	UNICOM 122.95
------------------------	-------------------------------------	---------------------------------------------------	-------------------------	--------------------------	-------	-------------------------



ELEV 56	TDZE 54	MINOE	VGSI and ILS glidepath not coincident (VGSI Angle 3.00°/TCH 68).	SNAKE INT I-SNA 17.3	SAGER INT I-SNA 17.3	
3000	1.3 NM	1.7 NM	3.7 NM	2.2 NM	2.4 NM	4.9 NM
CATEGORY	A	B	C	D		
S-ILS 20R*	255/24 201 (200-½)					
S-LOC 20R	1040/40 986 (1000-¾)	1040/55 986 (1000-1)	1040-2½	986 (1000-2½)		
C CIRCLING	1040-1¼ 984 (1000-1¼)	1040-1½ 984 (1000-½)	1040-3	1180-3 1124 (1200-3)		
DYERS FIX MINIMUMS (DUAL VOR RECEIVERS OR DME REQUIRED)						
S-LOC 20R	460/24	406 (500-½)		460/40	406 (500-¾)	
C CIRCLING	640-1	584 (600-1)		840-2¼ 784 (800-2¼)	1180-3 1124 (1200-3)	

SW-3, 20 MAR 2025 to 17 APR 2025

SW-3, 20 MAR 2025 to 17 APR 2025