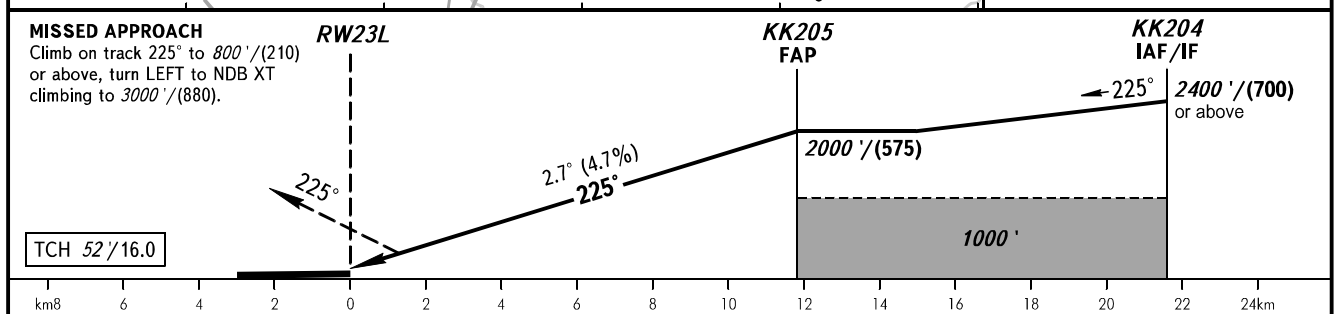
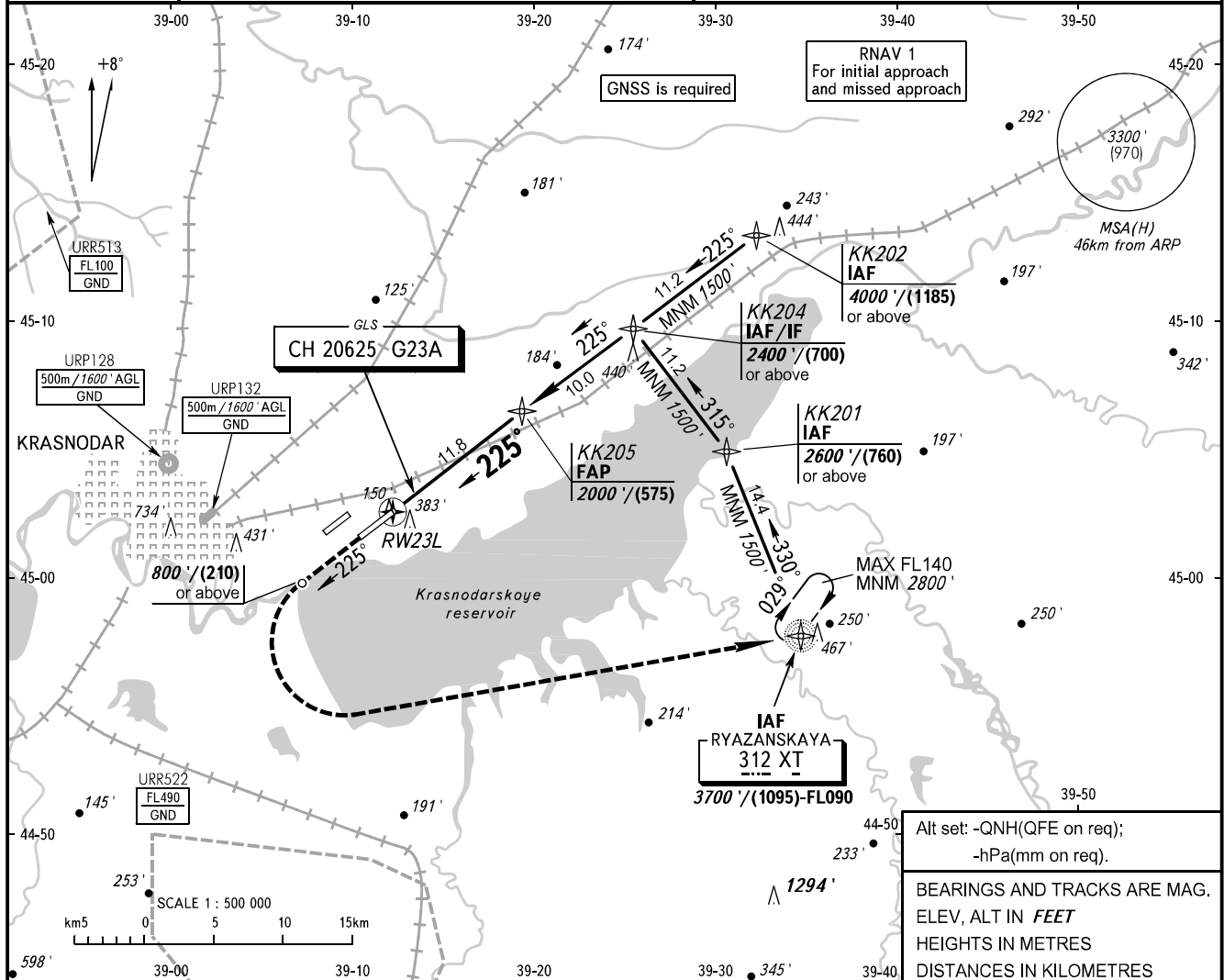


**INSTRUMENT
APPROACH
CHART - ICAO**

RADAR 121.300
TOWER 118.200

**KRASNODAR, RUSSIA
PASHKOVSKIY
GLS RWY 23L**

GBAS CH 20625 G23A **TRANSITION LEVEL:** ① **TRANSITION ALT:** 4000' **AD ELEV:** 120' / 36m
CH 20625 G23A **TRANSITION HGT:** (1185) **THR ELEV:** 120' / 36.5m



OCA(H)		A	B	C	D						
Straight-in	CAT I	281' (162')	291' (171')	301' (181')	311' (191')						
	Approach										
Circling		680' (560')	680' (560')	780' (660')	830' (710')						
GROUND SPEED		km/h	150	180	210	240	270	300	330	360	390
RATE OF DESCENT		m/s	2.0	2.4	2.7	3.1	3.5	3.9	4.3	4.7	5.1
		ft/min	385	463	540	617	694	771	848	925	1002

① **TRANSITION LEVEL:**
 - FL060 when QNH is 977 hPa (733mm mercury column) or above;
 - FL070 when QNH is 941 hPa (706mm mercury column) or above,
 but less than 977 hPa (733mm mercury column).
NOTE
 Wind shear is expected.