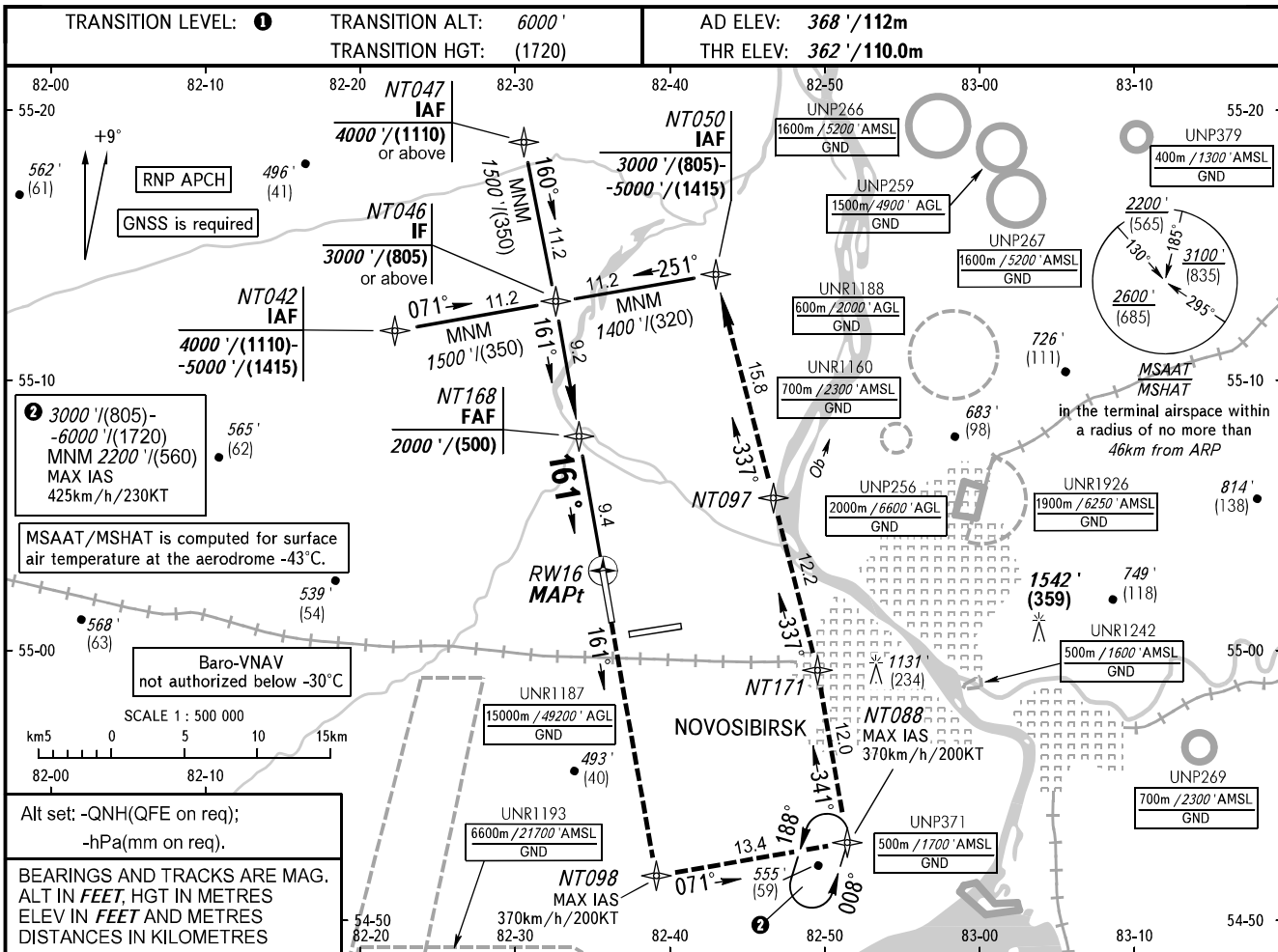


INSTRUMENT
APPROACH
CHART - ICAO

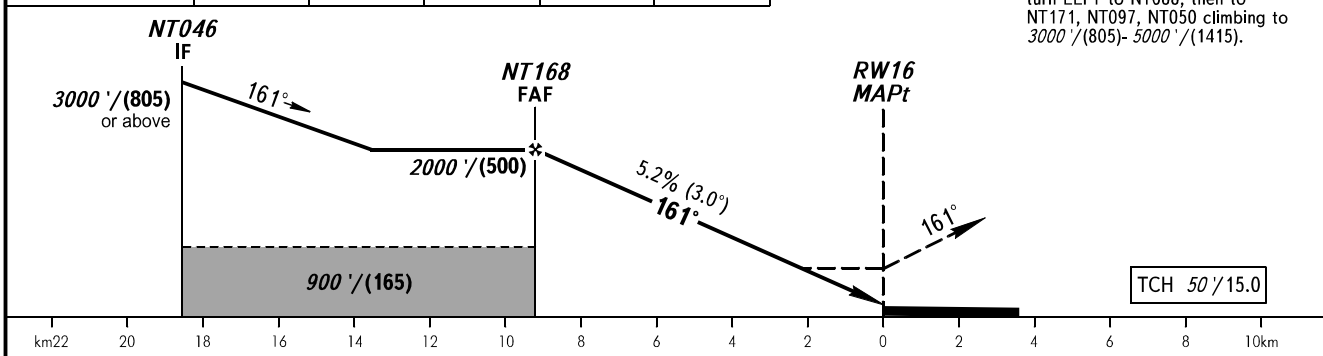
RADAR 122.000
TOWER 126.700

NOVOSIBIRSK, RUSSIA
TOLMACHEVO
RNAV RWY 16



DIST to RW16	9.4	8.0	6.0	4.0	2.0
ALTITUDE/HEIGHT	2000'/(500)	1780'/(430)	1440'/(325)	1090'/(225)	750'/(120)

MISSED APPROACH
Climb on track 161° to NT098, turn LEFT to NT088, then to NT171, NT097, NT050 climbing to 3000'/(805)-5000'/(1415).



OCA(H)		A	B	C	D
Straight-in Approach	LNAV/VNAV	580' (210') (70)	590' (230') (75)	600' (240') (75)	610' (250') (80)
	LNAV	690' (330') (105)	690' (330') (105)	690' (330') (105)	690' (330') (105)

1 TRANSITION LEVEL:
- FL070 when QNH is 1013 hPa (760mm mercury column) or above;
- FL080 when QNH is 977 hPa (733mm mercury column) or above, but less than 1013 hPa (760mm mercury column);
- FL090 when QNH is less than 977 hPa (733mm mercury column).
WARNING
MAPt at RW16. Timing not authorized for defining MAPt.

GROUND SPEED	km/h	150	180	210	240	270	300	330	360	390	420	450
	kt	81	97	113	130	146	162	178	194	211	227	243
RATE OF DESCENT	m/s	2.2	2.6	3.0	3.5	3.9	4.3	4.8	5.2	5.6	6.1	6.5
	ft/min	427	512	597	682	768	853	938	1024	1109	1194	1280

CHANGE: UNP379