

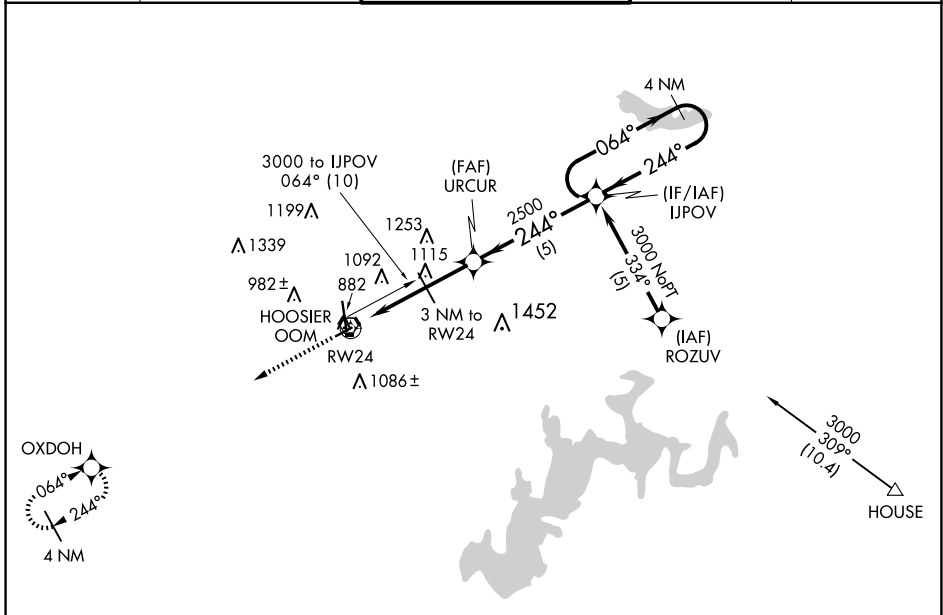
APP CRS 244°	Rwy Idg 3576
	TDZE 841
	Apt Elev 846

RNAV (GPS) RWY 24

MONROE COUNTY (BMG)

RNP APCH.	<p>▼ Rwy 24 helicopter visibility reduction below 1 SM NA. Procedure NA at night.</p> <p>▲ When local altimeter setting not received use Terre Haute Rgnl altimeter setting and increase all MDA 140 feet; increase LNAV Cat C/D ¼ mile.</p>	MISSED APPROACH: Climb to 3000 direct OXDOH WP and hold.
-----------	--	--

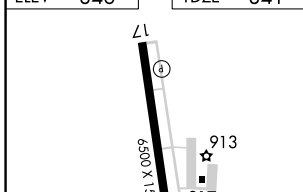
ASOS 134.525	HULMAN APP CON 128.025 339.8	BLOOMINGTON TOWER * 120.775 (CTAF) 0	GND CON 121.9	UNICOM 122.95
------------------------	--	--	-------------------------	-------------------------



EC-2, 20 MAR 2025 to 17 APR 2025

EC-2, 20 MAR 2025 to 17 APR 2025

ELEV	846	TDZE	841
------	-----	------	-----



3000	OXDOH	VGSI and descent angle not coincident (VGSI Angle 4.00/TCH 51).	IJPOV	4 NM Holding Pattern
↑	☀		URCUR	
			3 NM to RW24	064° → 3000
			RW24	← 244°
			1840 ≤ 3.06° TCH 31	
			2500	
			3 NM	2 NM
			5 NM	
CATEGORY	A	B	C	D
LNAV MDA	1320-1	479 (500-1)	1320-1¼ 479 (500-1¼)	1320-1½ 479 (500-1½)