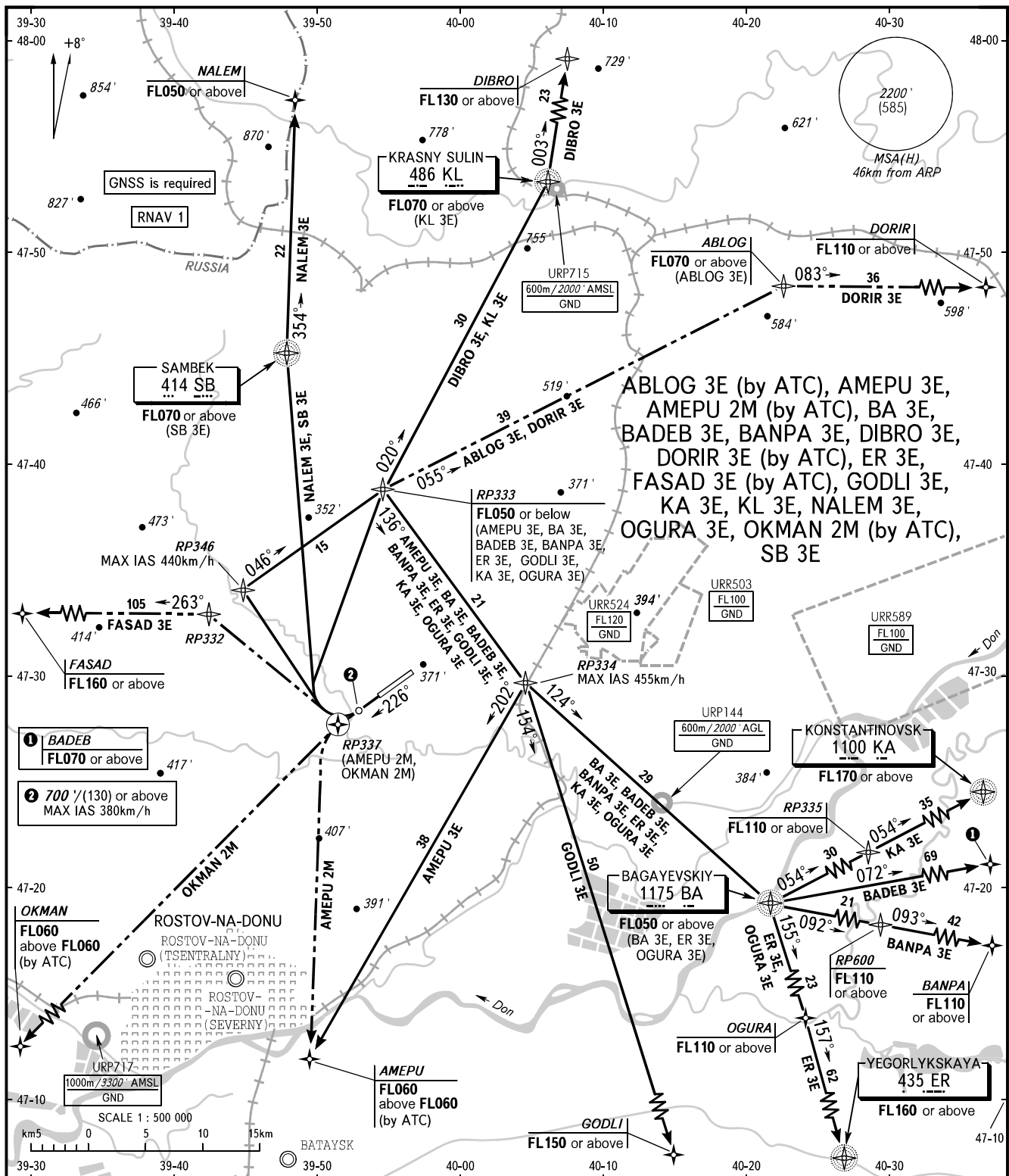


STANDARD DEPARTURE CHART
INSTRUMENT (SID) - ICAO

TRANSITION
ALTITUDE: 3500'

ROSTOV-NA-DONU, RUSSIA
PLATOV
RNAV RWY 23



ABLOG 3E (by ATC), AMEPU 3E, AMEPU 2M (by ATC), BA 3E, BADEB 3E, BANPA 3E, DIBRO 3E, DORIR 3E (by ATC), ER 3E, FASAD 3E (by ATC), GODLI 3E, KA 3E, KL 3E, NALEM 3E, OGURA 3E, OKMAN 2M (by ATC), SB 3E

- 1 BADEB
FL070 or above
- 2 700'/(130) or above
MAX IAS 380km/h

PLATOV TOWER	119.700
PLATOV RADAR	121.200
PLATOV APPROACH	130.600

- WARNING:**
- MINIMUM CLIMB GRADIENT (except AMEPU 2M, OKMAN 2M): 7.0% up to 700'/(130).
 - Where TODA is 3.6km, MINIMUM CLIMB GRADIENT (except AMEPU 2M, OKMAN 2M): 6.0% up to 700'/(130).
 - Turn before passing DER is PROHIBITED except AMEPU 2M, OKMAN 2M.

BEARINGS AND TRACKS ARE MAGNETIC
ELEVATIONS IN FEET
ALTITUDES IN FEET
HEIGHTS IN METRES
DISTANCES IN KILOMETRES

Alt set: -QNH(QFE on req);
-hPa(mm on req).

CHANGE: New chart