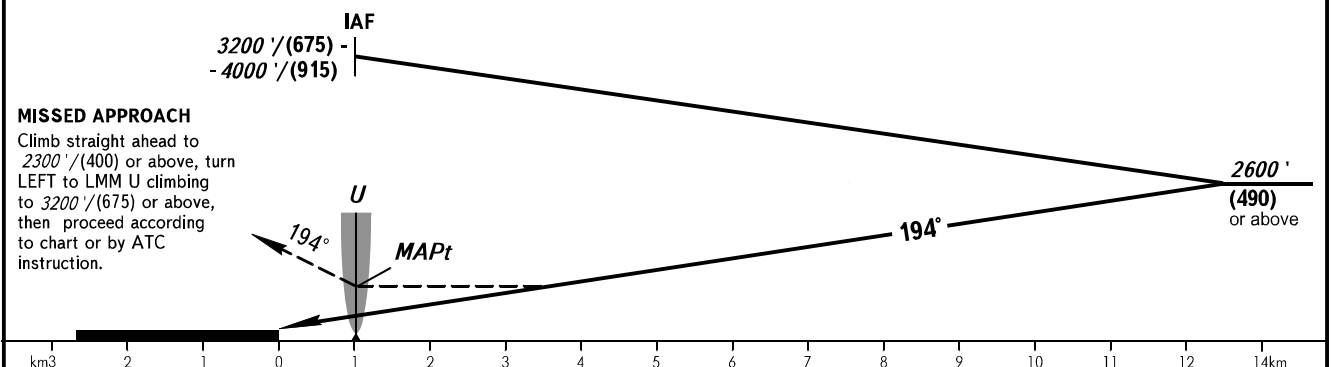
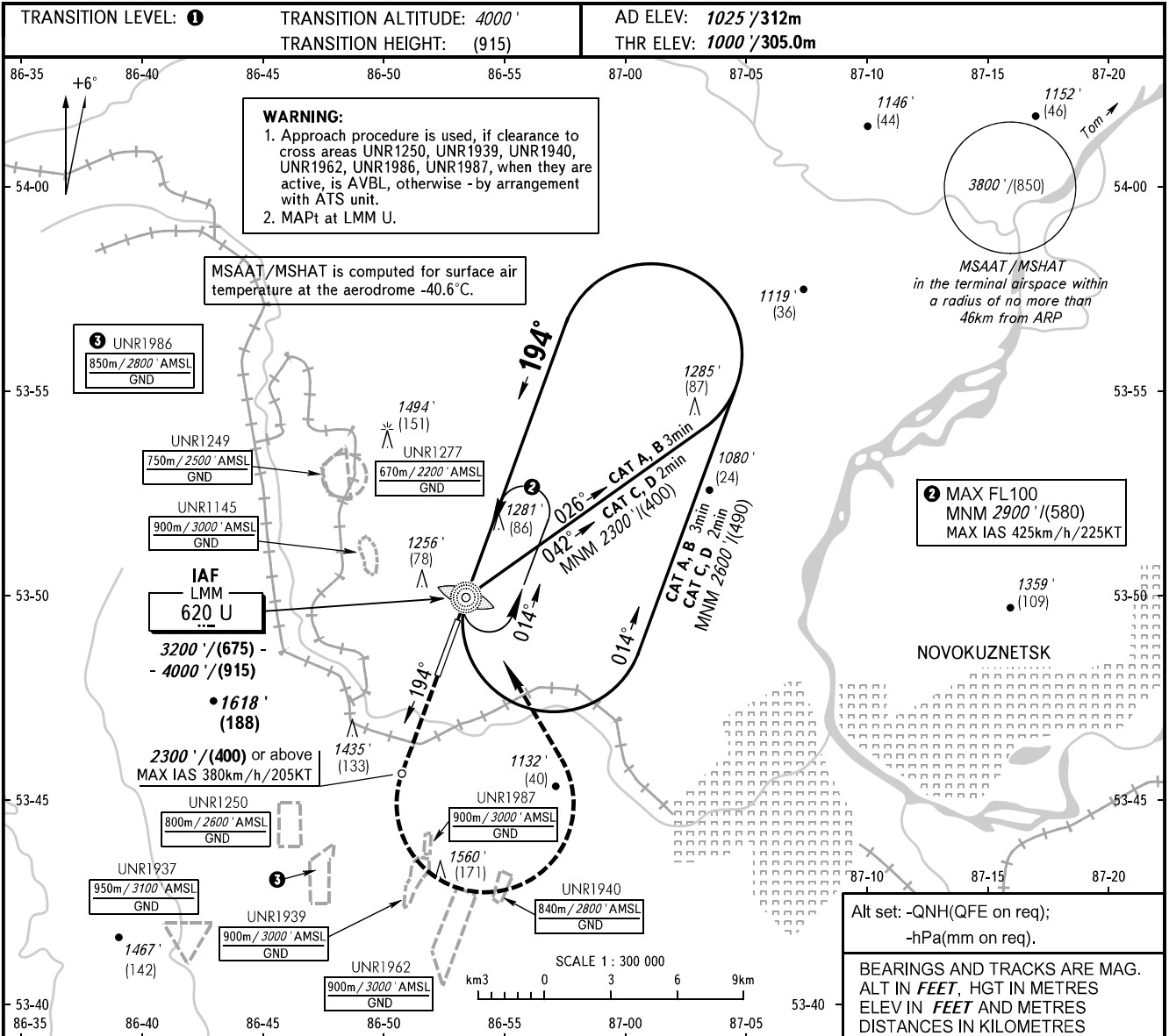


**INSTRUMENT  
APPROACH  
CHART - ICAO**

APPROACH	<b>118.600</b>
START	<b>121.200</b>

**NOVOKUZNETSK, RUSSIA  
SPICHENKOVO  
NDB Z RWY 19**



OCA(H)		A	B	C	D
Straight-in Approach		1580' (580') (180)	1580' (580') (180)	1580' (580') (180)	1580' (580') (180)
Circling		1580' (580') (180)	1730' (710') (220)	1830' (810') (255)	1960' (940') (295)

**① TRANSITION LEVEL:**  
- FL050 when QNH is 1013 hPa (760mm mercury column) or above;  
- FL060 when QNH is 977 hPa (733mm mercury column) or above, but less than 1013 hPa (760mm mercury column);  
- FL070 when QNH is less than 977 hPa (733mm mercury column).

CHANGE: New chart