

BILLINGS, MONTANA

HI-ILS Z or LOC Z RWY 10L

LOC/DME I-BIL 111.5 Chan 52	APCH CRS 102°	Rwy Idg 10,518 TDZE: 3585 Arprt Elev 3662
---	-------------------------	--

AL-48 [USAF]

BILLINGS LOGAN INTL (KBIL)

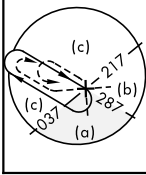
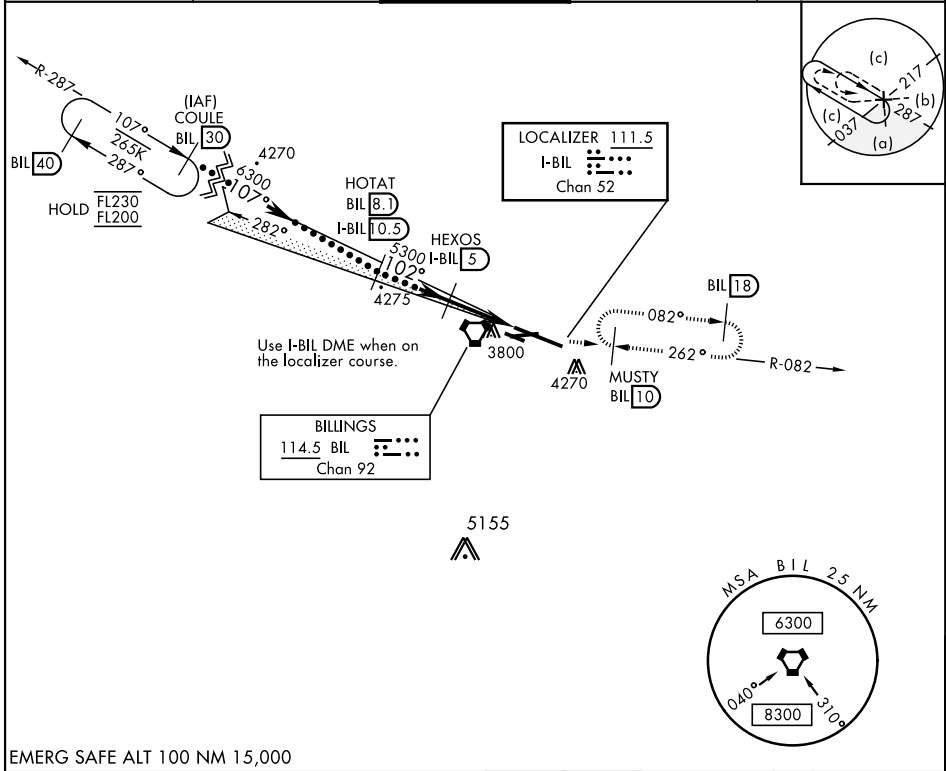
DME required. RADAR required for procedure entry.



MISSED APPROACH: Climb to 5700 on BIL VORTAC R-082 to MUSTY/10 DME and hold.

▼ * When ALS inop, increase CAT E RVR to 40.
** When ALS inop, increase CAT CDE RVR to 60.

ATIS 126.3	BILLINGS APP CON 120.5 284.6	BILLINGS TOWER 127.2 257.8	GND CON 121.9	CLNC DEL 121.9
----------------------	--	--------------------------------------	-------------------------	--------------------------



NW-1, 20 MAR 2025 to 17 APR 2025

NW-1, 20 MAR 2025 to 17 APR 2025

EMERG SAFE ALT 100 NM 15,000

COULE (30) FL200	HOTAT (8.1) I-BIL (0.5)	HEXOS (5) I-BIL (0.5)	ZOBUM (2.1) I-BIL (1)	LOC DME	MUSTY BIL (10)	ELEV 3662	TDZE 3585
GS 3.00° TCH 51	6300	5300	4360	2.9 NM	2.1 NM	0.2	
CATEGORY	C	D	E				
S-ILS 10L *	3785/24		200 (200-½)				
S-LOC 10L **	4000/40		415 (500-¾)				
CIRCLING	4180-1½ 518 (600-1½)		4580-3 918 (1000-3)				

REIL Rwy 25 and 28R
HIRL Rwy 10L-28R
MIRL Rwy 7-25 and 10R-28L

BILLINGS, MONTANA

45°48'N-108°33'W

BILLINGS LOGAN INTL (KBIL)

Amdt 4A 22APR21

HI-ILS Z or LOC Z RWY 10L