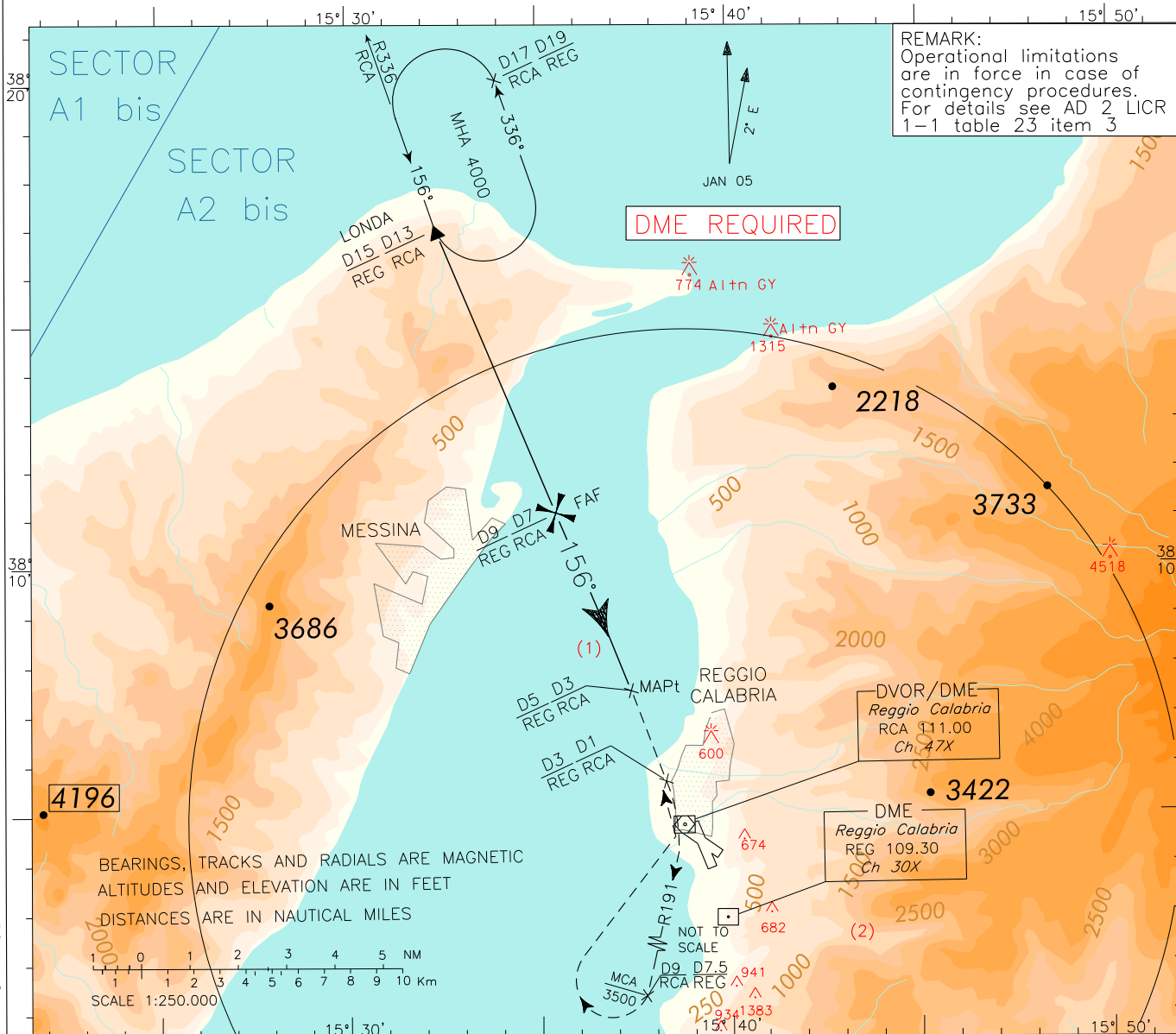


ICAO - INSTRUMENT APPROACH CHART

DOC.8168-ED.5-2006 AMDT 4

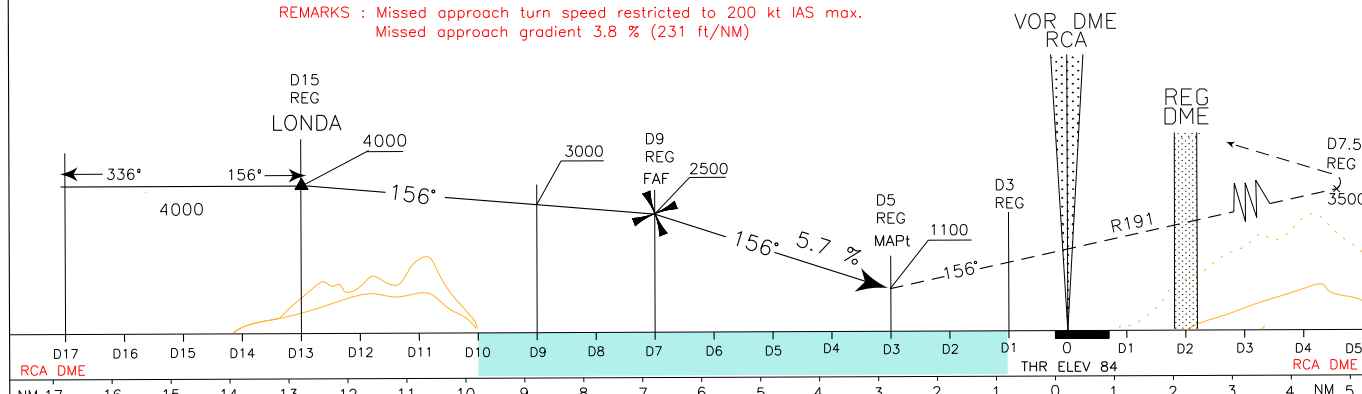
CHANGE: RCA NDB WITHDRAWN. RENUMBERED PAGE

<p>WARNING: In case of circling Rwy 33, PAPI indications strictly mandatory and lighting visual AIDS in working order. (See Visual Manoeuvring Rwy 33 - AD2 LICR 5-3)</p>	APP Reggio APP	120.275	AD ELEV	95	LICR	REGGIO CALABRIA CONTINGENCY VOR - U RWY 15
	TWR Reggio TWR	118.250				



TRANSITION ALT 7000 MISSED APPROACH : Continue on track 156° until 1 NM RCA DME (or 3 NM REG DME) climbing to 5000 ft, then turn right to join RDL 191 RCA VOR. At 9 NM RCA DME (or 7.5NM REG DME), to be reached at 3500 ft or above, turn right to RCA VORDME to be reached at 5000 ft, then proceed on RDL 336 to LONDA holding pattern to be reached at 5000 ft.

REMARKS : Missed approach turn speed restricted to 200 kt IAS max.
Missed approach gradient 3.8 % (231 ft/NM)



LANDING MINIMA (see WARNING "1")		REMARK1: Final approach track offset 5.4° from runway centerline. Runway centerline intercepted 2018m from Threshold 15. WARNING 1: IFR operations allowed only with following MINIMA: VISIBILITY 1500m, CEILING 1500ft. Landing allowed only with minimum SLANT VISIBILITY 5000m. WARNING 2: Circling allowed West of the aerodrome only.	GS	FT/MIN	DIST	ALT (HGT)	MNM SECT ALT RCA VOR
CATEGORY	A - B - C		80	460	6DME	2140 (2056)	
OCA (OCH)	VIS CEILING	100	580	5DME	1800 (1716)		
1100 (1016)	5000 M 1500 FT	120	690	4DME	1450 (1366)		
CIRCLING (see WARNING "2")	1500 (1405)	140	810	3DME	1100 (1016)		
		160	920	2DME	760 (676)		