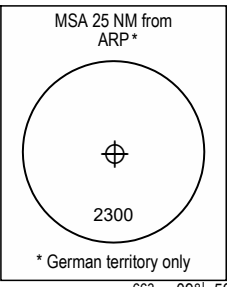
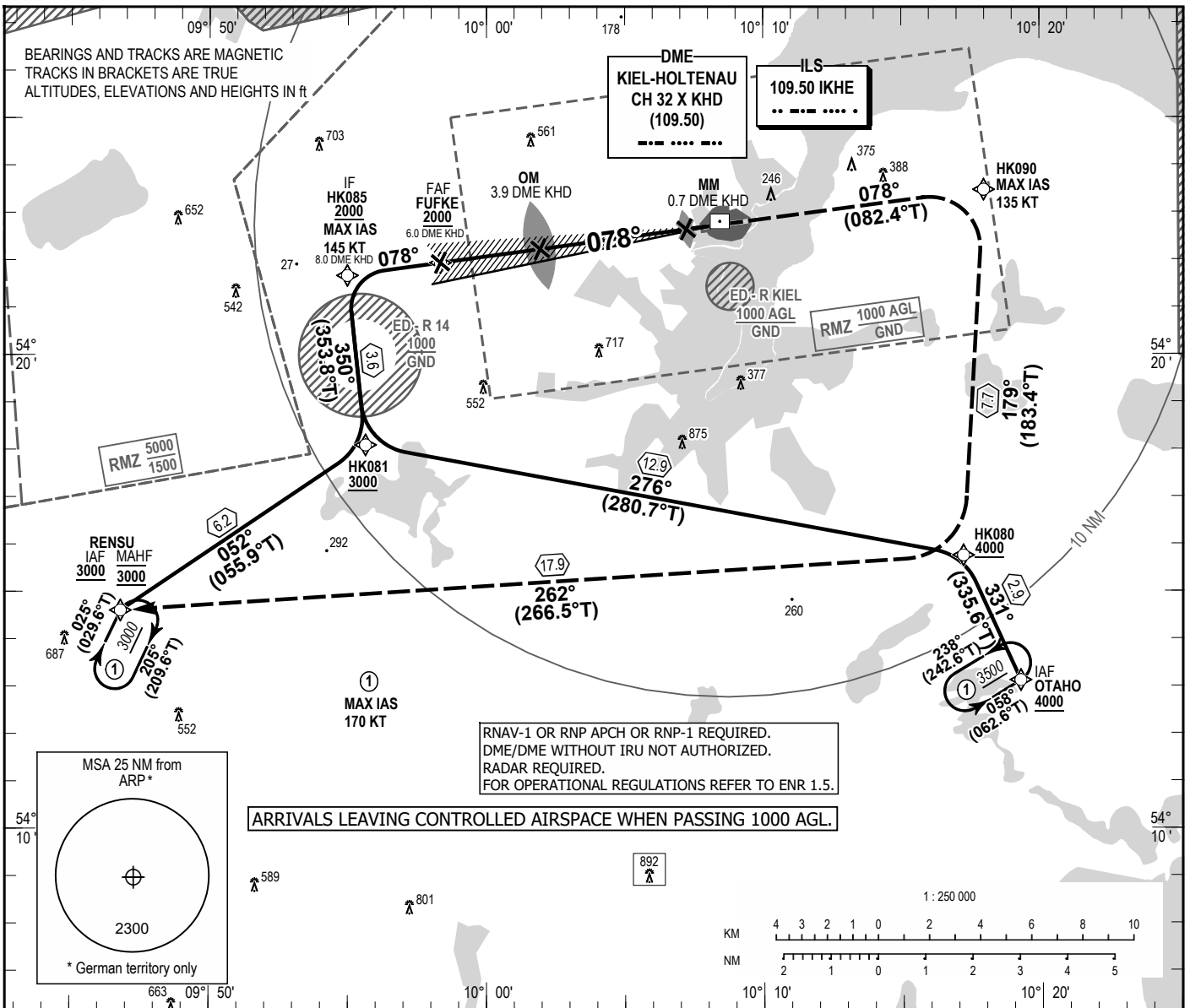


INSTRUMENT  
APPROACH  
CHART - ICAO

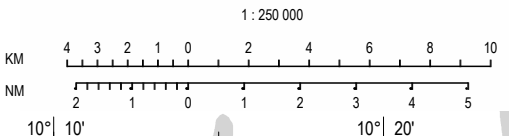
VAR 4° E  
ELEV 101  
OCH RELATED TO  
THR 08 ELEV 99

BREMEN RADAR 124.075  
KIEL INFORMATION 119.980

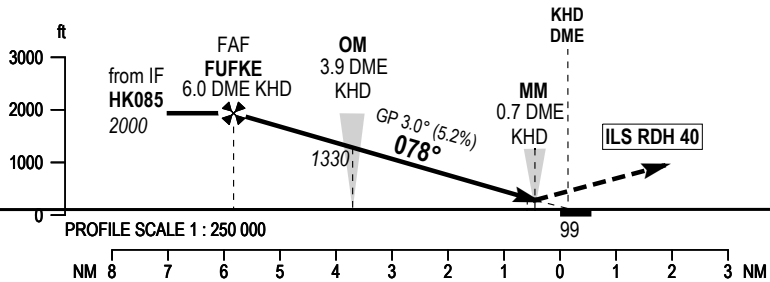
KIEL-HOLTENAU  
ILS  
RWY 08



RNAV-1 OR RNP APCH OR RNP-1 REQUIRED.  
DME/DME WITHOUT IRU NOT AUTHORIZED.  
RADAR REQUIRED.  
FOR OPERATIONAL REGULATIONS REFER TO ENR 1.5.



**MISSED APPROACH PROCEDURE**  
Climb on course 078° to HK090, to HK080, to RENSU climbing 3000.  
Max. IAS 135 Kts until HK090.



OCA (OCH)	A	B	C	D
ILS CAT I	274 (175)	286 (187)		
CIRCLING * OCA RELATED TO AD ELEV	550 (450)	670 (570)		

DIST DME KHD	5	4	3	2	1
DIST THR	4.9	3.9	2.9	1.9	0.9
ALTITUDE	1700	1380	1060	740	420

GS	kt	80	100	120	130
FUFKE - THR (5.8 NM)	MIN:SEC	4:23	3:30	2:55	2:42
Rate of descent (5.2%)	ft/MIN	420	530	640	690

\*NORTH OF AERODROME ONLY

Correction: Completely revised.