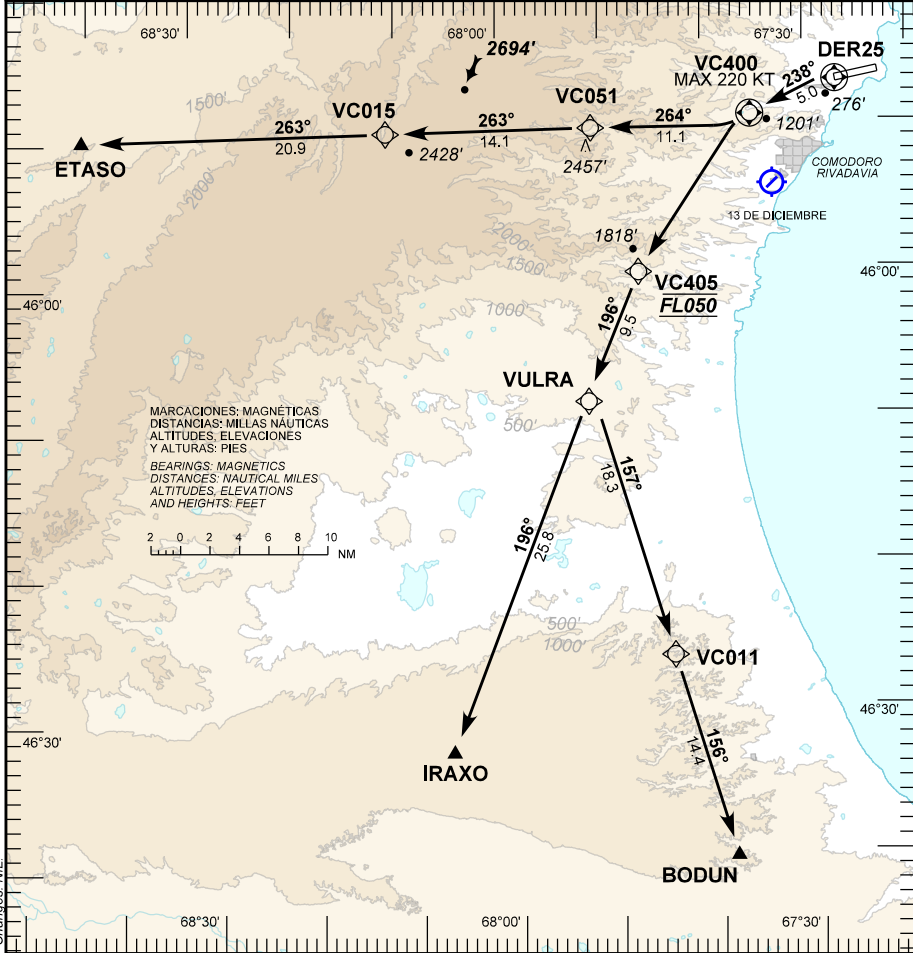
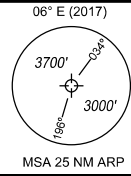


GRAL. ENRIQUE MOSCONI (SAVC)
COMODORO RIVADAVIA

SID RNP RWY 25
BODUN 1G - ETASO 1G - IRAXO 1G

| | | | |
|--|--------------------------------------|--------------------------------------|------------------------|
| Requiere Certificación Certification required | | AD ELEV | 185' |
| RNP 1 / RNAV 1 GNSS | | TRANS ALT | 3000' |
| COMODORO TWR 119.90 120.80 | COMODORO APP 119.90 120.80 | COMODORO CTL 124.30 126.75 | EMERG 121.50 |
| NOTA: NIL | | RMK: NIL | |



BODUN 1G; ETASO 1G; IRAXO 1G: Pendiente mínima de ascenso 5,9% hasta VC400.

BODUN 1G; ETASO 1G; IRAXO 1G: Minimum climb gradient 5.9% to VC400.

Changes: NIL

PANS OPS Cambios: NIL

DISEÑO EANA S.E. - NAVEGACION AEREA ARGENTINA
 DIRECCION REGULACION NORMAS Y PROCEDIMIENTOS - DINA

GRAL. E. MOSCONI (SAVC) SID RNP RWY 25
BODUN 1G – ETASO 1G – IRAXO 1G

| FIX IDENT | COORDINATES |
|-----------|--------------------------------|
| DER25 | 45°47'15.35" S 067°29'00.37" W |
| VC400 | 45°49'24.94" S 067°35'27.23" W |
| VC051 | 45°50'07.17" S 067°51'05.39" W |
| VC015 | 45°50'06.50" S 068°11'12.63" W |
| ETASO | 45°49'59.00" S 068°41'02.00" W |
| VC405 | 46°00'03.37" S 067°46'49.43" W |
| IRAXO | 46°32'40.00" S 068°06'33.00" W |
| VULRA | 46°08'50.65" S 067°52'05.87" W |
| VC011 | 46°26'23.13" S 067°44'35.37" W |
| BODUN | 46°40'12.00" S 067°38'37.00" W |

31 ENERO 2019

1/2 GRAL. E. MOSCONI (SAVC) SID RNP RWY 25**BODUN 1G – ETASO 1G – IRAXO 1G**

| Seq Num | Fix Ident | Path Terminator | Fly Over | Distance (NM) | Course M°(T°) | Turn | Altitude (ft/FL) | Altitude Description | Speed Limit (Kt) | Navigation Specification | RNP | Dec (ARP 2017) |
|---------|-----------|-----------------|----------|---------------|---------------|------|------------------|----------------------|------------------|--------------------------|-----|----------------|
| 010 | DER25 | IF | Y | N/A | N/A | N/A | N/A | N/A | -220 | RNAV 1 or RNP 1 | 1.0 | 6 E |
| 020 | VC400 | CF | Y | 5.0 | 238 (244.4) | N/A | N/A | N/A | -220 | RNAV 1 or RNP 1 | 1.0 | 6 E |
| 030 | VC405 | DF | N | N/A | N/A | L | FL 050 | @ | N/A | RNAV 1 or RNP 1 | 1.0 | 6 E |
| 040 | VULRA | TF | N | 9.5 | 196 (202.7) | N/A | N/A | N/A | N/A | RNAV 1 or RNP 1 | 1.0 | 6 E |
| 050 | IRAXO | TF | N | 25.8 | 196 (202.9) | N/A | N/A | N/A | N/A | RNAV 1 or RNP 1 | 1.0 | 6 E |
| 010 | DER25 | IF | Y | N/A | N/A | N/A | N/A | N/A | -220 | RNAV 1 or RNP 1 | 1.0 | 6 E |
| 020 | VC400 | CF | Y | 5.0 | 238 (244.4) | N/A | N/A | N/A | -220 | RNAV 1 or RNP 1 | 1.0 | 6 E |
| 030 | VC405 | DF | N | N/A | N/A | L | FL 050 | @ | N/A | RNAV 1 or RNP 1 | 1.0 | 6 E |

31 ENERO 2019

2/2 GRAL. E. MOSCONI (SAVC) SID RNP RWY 25**BODUN 1G – ETASO 1G – IRAXO 1G**

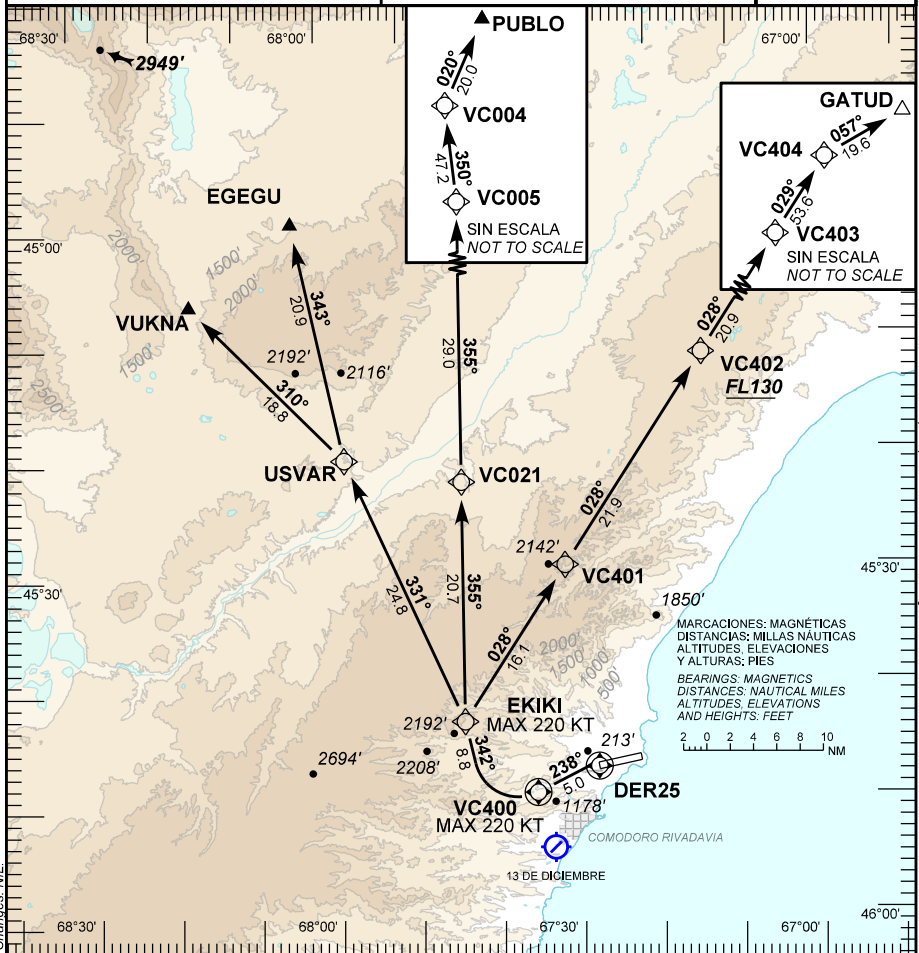
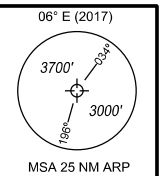
| Seq Num | Fix Ident | Path Terminator | Fly Over | Distance (NM) | Course M°(T°) | Turn | Altitude (ft/FL) | Altitude Description | Speed Limit (Kt) | Navigation Specification | RNP | Dec (ARP 2017) |
|---------|-----------|-----------------|----------|---------------|---------------|------|------------------|----------------------|------------------|--------------------------|-----|----------------|
| 040 | VULRA | TF | N | 9.5 | 196 (202.7) | N/A | N/A | N/A | N/A | RNAV 1 or RNP 1 | 1.0 | 6 E |
| 050 | VC011 | TF | N | 18.3 | 157 (163.4) | N/A | N/A | N/A | N/A | RNAV 1 or RNP 1 | 1.0 | 6 E |
| 060 | BODUN | TF | N | 14.4 | 156 (163.4) | N/A | N/A | N/A | N/A | RNAV 1 or RNP 1 | 1.0 | 6 E |
| 010 | DER25 | IF | Y | N/A | N/A | N/A | N/A | N/A | -220 | RNAV 1 or RNP 1 | 1.0 | 6 E |
| 020 | VC400 | CF | Y | 5.0 | 238 (244.4) | N/A | N/A | N/A | -220 | RNAV 1 or RNP 1 | 1.0 | 6 E |
| 030 | VC051 | CF | N | 11.1 | 264 (270.7) | N/A | N/A | N/A | N/A | RNAV 1 or RNP 1 | 1.0 | 6 E |
| 040 | VC015 | TF | N | 14.1 | 263 (270.2) | N/A | N/A | N/A | N/A | RNAV 1 or RNP 1 | 1.0 | 6 E |
| 050 | ETASO | TF | N | 20.9 | 263 (270.5) | N/A | N/A | N/A | N/A | RNAV 1 or RNP 1 | 1.0 | 6 E |

31 ENERO 2019

GRAL. ENRIQUE MOSCONI (SAVC)
COMODORO RIVADAVIA

EGEGU 1G - GATUD 1G - PUBLO 1G - VUKNA 1G

| | | | |
|--|--------------------------------------|---------------------------------|------------------------|
| Requiere Certificación Certification required | | AD ELEV 185' | |
| RNP 1 / RNAV 1 GNSS | | TRANS ALT 3000' | |
| COMODORO TWR/APP 119.90 120.80 | COMODORO CTL 124.30 126.75 | COMODORO NORTE 125.50 | EMERG 121.50 |
| NOTA: NIL | | RMK: NIL | |



GATUD 1G: Pendiente mínima de ascenso 6.0% hasta VC400, luego 3.7% hasta VC402.
EGEGU 1G; VUKNA 1G; PUBLO 1G: Pendiente mínima de ascenso 6.0% hasta VC400.
GATUD 1G: Minimum climb gradient 6.0% to VC400, then 3.7% to VC402.
EGEGU 1G; VUKNA 1G; PUBLO 1G: Minimum climb gradient 6.0% to VC400.

31 ENERO 2019

GRAL. E. MOSCONI (SAVC) SID RNP RWY 25
EGEGU 1G – GATUD 1G – PUBLO 1G – VUKNA 1G

| FIX IDENT | COORDINATES |
|-----------|--------------------------------|
| DER25 | 45°47'15.35" S 067°29'00.37" W |
| VC400 | 45°49'24.94" S 067°35'27.23" W |
| EKIKI | 45°43'08.10" S 067°44'12.54" W |
| VC401 | 45°29'47.03" S 067°31'20.21" W |
| VC402 | 45°11'36.08" S 067°14'00.39" W |
| VC403 | 44°54'13.53" S 066°57'39.29" W |
| VC404 | 44°09'26.31" S 066°16'25.10" W |
| GATUD | 43°59'47.00" S 065°52'48.00" W |
| VC021 | 45°22'23.75" S 067°43'47.86" W |
| VC005 | 44°53'25.58" S 067°43'13.77" W |
| VC004 | 44°06'21.95" S 067°48'55.30" W |
| PUBLO | 43°48'14.24" S 067°37'12.71" W |
| EGEGU | 44°59'44.00" S 068°03'46.00" W |
| USVAR | 45°20'17.48" S 067°58'05.73" W |
| VUKNA | 45°06'39.00" S 068°16'29.00" W |

31 ENERO 2019

1/4 GRAL. E. MOSCONI (SAVC) SID RNP RWY 25**EGEGU 1G – GATUD 1G – PUBL0 1G – VUKNA 1G**

| Seq Num | Fix Ident | Path Terminator | Fly Over | Distance (NM) | Course M°(T°) | Turn | Altitude (ft/FL) | Altitude Description | Speed Limit (Kt) | Navigation Specification | RNP | Dec (ARP 2017) |
|---------|-----------|-----------------|----------|---------------|---------------|------|------------------|----------------------|------------------|--------------------------|-----|----------------|
| 010 | DER25 | IF | Y | N/A | N/A | N/A | N/A | N/A | -220 | RNAV 1 or RNP 1 | 1.0 | 6 E |
| 020 | VC400 | CF | Y | 5.0 | 238 (244.4) | N/A | N/A | N/A | -220 | RNAV 1 or RNP 1 | 1.0 | 6 E |
| 030 | EKIKI | CF | N | 8.8 | 342 (348.1) | N/A | N/A | N/A | -220 | RNAV 1 or RNP 1 | 1.0 | 6 E |
| 040 | VC401 | TF | N | 16.1 | 028 (034.0) | N/A | N/A | N/A | N/A | RNAV 1 or RNP 1 | 1.0 | 6 E |
| 050 | VC402 | TF | N | 21.9 | 028 (033.8) | N/A | FL 130 | + | N/A | RNAV 1 or RNP 1 | 1.0 | 6 E |
| 060 | VC403 | TF | N | 20.9 | 028 (033.6) | N/A | N/A | N/A | N/A | RNAV 1 or RNP 1 | 1.0 | 6 E |
| 070 | VC404 | TF | N | 53.6 | 029 (033.1) | N/A | N/A | N/A | N/A | RNAV 1 or RNP 1 | 1.0 | 6 E |
| 080 | GATUD | TF | N | 19.6 | 057 (060.3) | N/A | N/A | N/A | N/A | RNAV 1 or RNP 1 | 1.0 | 6 E |

31 ENERO 2019

2/4 GRAL. E. MOSCONI (SAVC) SID RNP RWY 25

EGEGU 1G – GATUD 1G – PUBLO 1G – VUKNA 1G

| Seq Num | Fix Ident | Path Terminator | Fly Over | Distance (NM) | Course M°(T°) | Turn | Altitude (ft/FL) | Altitude Description | Speed Limit (Kt) | Navigation Specification | RNP | Dec (ARP 2017) |
|---------|-----------|-----------------|----------|---------------|---------------|------|------------------|----------------------|------------------|--------------------------|-----|----------------|
| 010 | DER25 | IF | Y | N/A | N/A | N/A | N/A | N/A | -220 | RNAV 1 or RNP 1 | 1.0 | 6 E |
| 020 | VC400 | CF | Y | 5.0 | 238 (244.4) | N/A | N/A | N/A | -220 | RNAV 1 or RNP 1 | 1.0 | 6 E |
| 030 | EKIKI | CF | N | 8.8 | 342 (348.1) | N/A | N/A | N/A | -220 | RNAV 1 or RNP 1 | 1.0 | 6 E |
| 040 | VC021 | TF | N | 20.7 | 355 (000.8) | N/A | N/A | N/A | N/A | RNAV 1 or RNP 1 | 1.0 | 6 E |
| 050 | VC005 | TF | N | 29.0 | 355 (000.8) | N/A | N/A | N/A | N/A | RNAV 1 or RNP 1 | 1.0 | 6 E |
| 060 | VC004 | TF | N | 47.2 | 350 (355.1) | N/A | N/A | N/A | N/A | RNAV 1 or RNP 1 | 1.0 | 6 E |
| 070 | PUBLO | TF | N | 20.0 | 020 (024.9) | N/A | N/A | N/A | N/A | RNAV 1 or RNP 1 | 1.0 | 6 E |
| 010 | DER25 | IF | Y | N/A | N/A | N/A | N/A | N/A | -220 | RNAV 1 or RNP 1 | 1.0 | 6 E |

31 ENERO 2019

3/4 GRAL. E. MOSCONI (SAVC) SID RNP RWY 25**EGEGU 1G – GATUD 1G – PUBL0 1G – VUKNA 1G**

| Seq Num | Fix Ident | Path Terminator | Fly Over | Distance (NM) | Course M°(T°) | Turn | Altitude (ft/FL) | Altitude Description | Speed Limit (Kt) | Navigation Specification | RNP | Dec (ARP 2017) |
|---------|-----------|-----------------|----------|---------------|---------------|------|------------------|----------------------|------------------|--------------------------|-----|----------------|
| 020 | VC400 | CF | Y | 5.0 | 238 (244.4) | N/A | N/A | N/A | -220 | RNAV 1 or RNP 1 | 1.0 | 6 E |
| 030 | EKIKI | CF | N | 8.8 | 342 (348.1) | N/A | N/A | N/A | -220 | RNAV 1 or RNP 1 | 1.0 | 6 E |
| 040 | USVAR | TF | N | 24.8 | 331 (336.9) | N/A | N/A | N/A | N/A | RNAV 1 or RNP 1 | 1.0 | 6 E |
| 050 | EGEGU | TF | N | 20.9 | 343 (349.0) | N/A | N/A | N/A | N/A | RNAV 1 or RNP 1 | 1.0 | 6 E |
| 010 | DER25 | IF | Y | N/A | N/A | N/A | N/A | N/A | -220 | RNAV 1 or RNP 1 | 1.0 | 6 E |
| 020 | VC400 | CF | Y | 5.0 | 238 (244.4) | N/A | N/A | N/A | -220 | RNAV 1 or RNP 1 | 1.0 | 6 E |
| 030 | EKIKI | CF | N | 8.8 | 342 (348.1) | N/A | N/A | N/A | -220 | RNAV 1 or RNP 1 | 1.0 | 6 E |
| 040 | USVAR | TF | N | 24.8 | 331 (336.9) | N/A | N/A | N/A | N/A | RNAV 1 or RNP 1 | 1.0 | 6 E |

31 ENERO 2019

4/4 GRAL. E. MOSCONI (SAVC) SID RNP RWY 25
EGEGU 1G – GATUD 1G – PUBL0 1G – VUKNA 1G

| Seq Num | Fix Ident | Path Terminator | Fly Over | Distance (NM) | Course M°(T°) | Turn | Altitude (ft/FL) | Altitude Description | Speed Limit (Kt) | Navigation Specification | RNP | Dec (ARP 2017) |
|---------|-----------|-----------------|----------|---------------|---------------|------|------------------|----------------------|------------------|--------------------------|-----|----------------|
| 050 | VUKNA | TF | N | 18.8 | 310 (316.5) | N/A | N/A | N/A | N/A | RNAV 1 or RNP 1 | 1.0 | 6 E |

31 ENERO 2019

GRAL. E. MOSCONI (SAVC) SID RNP RWY 07
EGEGU 1C – GATUD 1C – PUBLO 1C – VUKNA 1C

| FIX IDENT | COORDINATES |
|-----------|--------------------------------|
| ISEXU | 45°28'32.02" S 067°23'15.38" W |
| VC155 | 45°22'06.37" S 067°32'23.21" W |
| OROXI | 45°08'20.90" S 067°51'50.26" W |
| VUKNA | 45°06'39.00" S 068°16'29.00" W |
| VC151 | 45°35'23.39" S 066°56'06.72" W |
| VC152 | 45°05'13.53" S 066°30'31.53" W |
| VC153 | 44°17'00.38" S 065°52'55.72" W |
| GATUD | 43°59'47.00" S 065°52'48.00" W |
| ISKES | 44°51'37.00" S 067°29'20.00" W |
| PUBLO | 43°48'14.24" S 067°37'12.71" W |
| VC150 | 45°46'25.23" S 067°22'39.80" W |
| EGEGU | 44°59'44.00" S 068°03'46.00" W |

31 ENERO 2019

1/3 GRAL. E. MOSCONI (SAVC) SID RNP RWY 07**EGEGU 1C – GATUD 1C – PUBLO 1C – VUKNA 1C**

| Seq Num | Fix Ident | Path Terminator | Fly Over | Distance (NM) | Course M°(T°) | Turn | Altitude (ft/FL) | Altitude Description | Speed Limit (Kt) | Navigation Specification | RNP | Dec (ARP 2017) |
|---------|-----------|-----------------|----------|---------------|---------------|------|------------------|----------------------|------------------|--------------------------|-----|----------------|
| 010 | VC150 | CF | Y | 3.0 | 073 (079.3) | N/A | N/A | N/A | N/A | RNAV1 or RNP1 | 1.0 | 6 E |
| 020 | ISEXU | DF | N | N/A | N/A | L | FL 060 | @ | N/A | RNAV1 or RNP1 | 1.0 | 6 E |
| 030 | VC155 | TF | N | 9.1 | 309 (315.0) | N/A | N/A | N/A | N/A | RNAV1 or RNP1 | 1.0 | 6 E |
| 040 | OROXI | TF | N | 19.4 | 309 (315.2) | N/A | N/A | N/A | N/A | RNAV1 or RNP1 | 1.0 | 6 E |
| 050 | VUKNA | TF | N | 17.5 | 269 (275.7) | N/A | N/A | N/A | N/A | RNAV1 or RNP1 | 1.0 | 6 E |
| 010 | VC150 | CF | Y | 3.0 | 073 (079.3) | N/A | N/A | N/A | N/A | RNAV1 or RNP1 | 1.0 | 6 E |
| 020 | VC151 | TF | N | 21.6 | 053 (059.2) | N/A | N/A | N/A | N/A | RNAV1 or RNP1 | 1.0 | 6 E |
| 030 | VC152 | TF | N | 35.2 | 026 (030.7) | N/A | N/A | N/A | N/A | RNAV1 or RNP1 | 1.0 | 6 E |

31 ENERO 2019

2/3 GRAL. E. MOSCONI (SAVC) SID RNP RWY 07**EGEGU 1C – GATUD 1C – PUBLO 1C – VUKNA 1C**

| Seq Num | Fix Ident | Path Terminator | Fly Over | Distance (NM) | Course M°(T°) | Turn | Altitude (ft/FL) | Altitude Description | Speed Limit (Kt) | Navigation Specification | RNP | Dec (ARP 2017) |
|---------|-----------|-----------------|----------|---------------|---------------|------|------------------|----------------------|------------------|--------------------------|-----|----------------|
| 040 | VC153 | TF | N | 55.2 | 025 (028.9) | N/A | N/A | N/A | N/A | RNAV1 or RNP1 | 1.0 | 6 E |
| 050 | GATUD | TF | N | 17.2 | 357 (000.3) | N/A | N/A | N/A | N/A | RNAV1 or RNP1 | 1.0 | 6 E |
| 010 | VC150 | CF | Y | 3.0 | 073 (079.3) | N/A | N/A | N/A | N/A | RNAV1 or RNP1 | 1.0 | 6 E |
| 020 | ISEXU | DF | N | N/A | N/A | L | FL 060 | @ | N/A | RNAV1 or RNP1 | 1.0 | 6 E |
| 030 | ISKES | TF | N | 37.2 | 348 (353.4) | N/A | N/A | N/A | N/A | RNAV1 or RNP1 | 1.0 | 6 E |
| 040 | PUBLO | TF | N | 63.6 | 350 (354.9) | N/A | N/A | N/A | N/A | RNAV1 or RNP1 | 1.0 | 6 E |
| 010 | VC150 | CF | Y | 3.0 | 073 (079.3) | N/A | N/A | N/A | N/A | RNAV1 or RNP1 | 1.0 | 6 E |
| 020 | ISEXU | DF | N | N/A | N/A | L | FL 060 | @ | N/A | RNAV1 or RNP1 | 1.0 | 6 E |

31 ENERO 2019

3/3 GRAL. E. MOSCONI (SAVC) SID RNP RWY 07**EGEGU 1C – GATUD 1C – PUBL0 1C – VUKNA 1C**

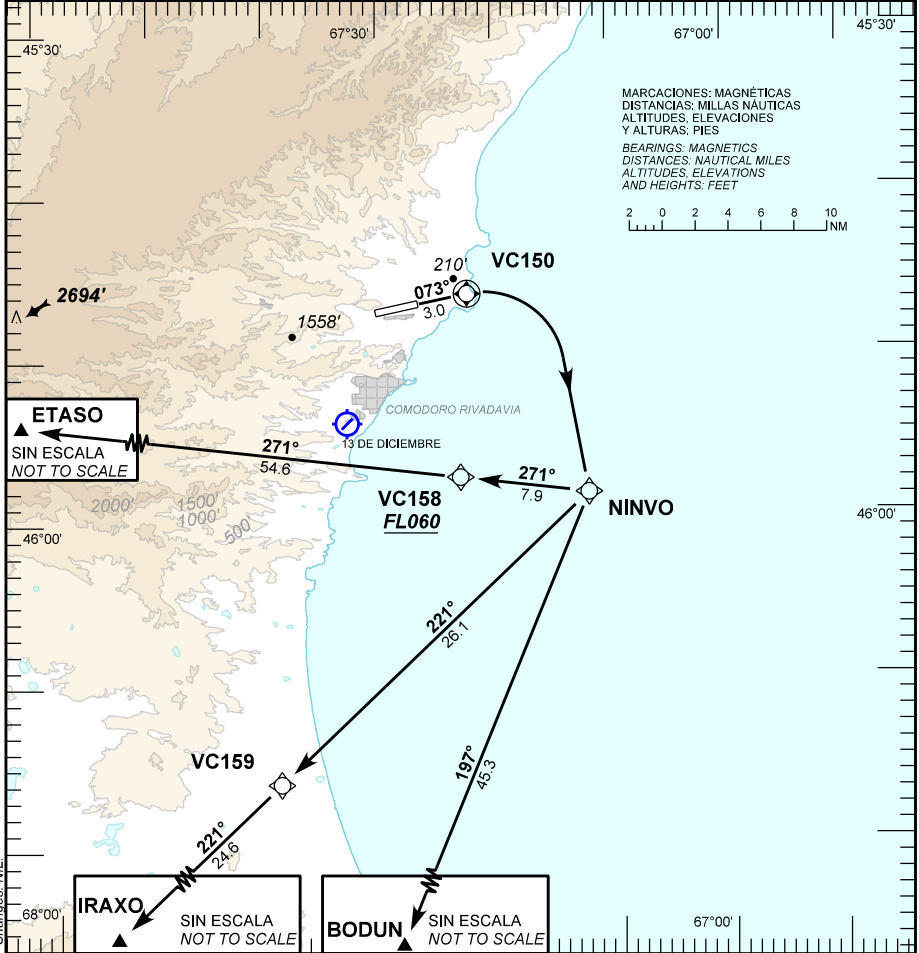
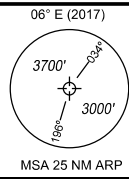
| Seq Num | Fix Ident | Path Terminator | Fly Over | Distance (NM) | Course M°(T°) | Turn | Altitude (ft/FL) | Altitude Description | Speed Limit (Kt) | Navigation Specification | RNP | Dec (ARP 2017) |
|---------|-----------|-----------------|----------|---------------|---------------|------|------------------|----------------------|------------------|--------------------------|-----|----------------|
| 030 | VC155 | TF | N | 9.1 | 309 (315.0) | N/A | N/A | N/A | N/A | RNAV1 or RNP1 | 1.0 | 6 E |
| 040 | OROXI | TF | N | 19.4 | 309 (315.2) | N/A | N/A | N/A | N/A | RNAV1 or RNP1 | 1.0 | 6 E |
| 050 | EGEGU | TF | N | 12.1 | 309 (315.6) | N/A | N/A | N/A | N/A | RNAV1 or RNP1 | 1.0 | 6 E |

31 ENERO 2019

GRAL. ENRIQUE MOSCONI (SAVC)
COMODORO RIVADAVIA

SID RNP RWY 07
BODUN 1C - ETASO 1C - IRAXO 1C

| | | | |
|--|--------------------------------------|--------------------------------------|------------------------|
| Requiere Certificación Certification required | | AD ELEV | 185' |
| RNP 1 / RNAV 1 GNSS | | TRANS ALT | 3000' |
| COMODORO TWR 119.90 120.80 | COMODORO APP 119.90 120.80 | COMODORO CTL 124.30 126.75 | EMERG 121.50 |
| NOTE: NIL | | RMK: NIL | |



Changes: NIL

PANS OPS Cambios: NIL

DISEÑO EANA S.E. - NAVEGACIÓN AEREA ARGENTINA

DIRECCIÓN REGULACIÓN NORMAS Y PROCEDIMIENTOS - DNINA

ETASO 1C: Pendiente mínima de ascenso 3.6% hasta VC158.
ETASO 1C: Minimum climb gradient 3.6% to VC158.

31 ENERO 2019

GRAL. E. MOSCONI (SAVC) SID RNP RWY 07
BODUN 1C – ETASO 1C – IRAXO 1C

| FIX IDENT | COORDINATES |
|------------------|--------------------------------|
| VC150 | 45°46'25.23" S 067°22'39.80" W |
| NINVO | 45°58'41.59" S 067°12'20.46" W |
| VC158 | 45°57'39.13" S 067°23'36.85" W |
| ETASO | 45°49'59.00" S 068°41'02.00" W |
| VC159 | 46°16'14.94" S 067°40'07.68" W |
| IRAXO | 46°32'40.00" S 068°06'33.00" W |
| BODUN | 46°40'12.00" S 067°38'37.00" W |

31 ENERO 2019

1/2 GRAL. E. MOSCONI (SAVC) SID RNP RWY 07**BODUN 1C – ETASO 1C – IRAXO 1C**

| Seq Num | Fix Ident | Path Terminator | Fly Over | Distance (NM) | Course M°(T°) | Turn | Altitude (ft/FL) | Altitude Description | Speed Limit (Kt) | Navigation Specification | RNP | Dec (ARP 2017) |
|---------|-----------|-----------------|----------|---------------|---------------|------|------------------|----------------------|------------------|--------------------------|-----|----------------|
| 010 | VC150 | CF | Y | 3.0 | 073 (079.3) | N/A | N/A | N/A | N/A | RNAV1 or RNP1 | 1.0 | 6 E |
| 020 | NINVO | DF | N | N/A | N/A | R | N/A | N/A | N/A | RNAV1 or RNP1 | 1.0 | 6 E |
| 030 | VC159 | TF | N | 26.1 | 221 (227.9) | N/A | N/A | N/A | N/A | RNAV1 or RNP1 | 1.0 | 6 E |
| 040 | IRAXO | TF | N | 24.6 | 221 (228.2) | N/A | N/A | N/A | N/A | RNAV1 or RNP1 | 1.0 | 6 E |
| 010 | VC150 | CF | Y | 3.0 | 073 (079.3) | N/A | N/A | N/A | N/A | RNAV1 or RNP1 | 1.0 | 6 E |
| 020 | NINVO | DF | N | N/A | N/A | R | N/A | N/A | N/A | RNAV1 or RNP1 | 1.0 | 6 E |
| 030 | VC158 | TF | N | 7.9 | 271 (277.6) | N/A | FL 060 | + | N/A | RNAV1 or RNP1 | 1.0 | 6 E |
| 040 | ETASO | TF | N | 54.6 | 271 (278.5) | N/A | N/A | N/A | N/A | RNAV1 or RNP1 | 1.0 | 6 E |

31 ENERO 2019

2/2 GRAL. E. MOSCONI (SAVC) SID RNP RWY 07**BODUN 1C – ETASO 1C – IRAXO 1C**

| Seq Num | Fix Ident | Path Terminator | Fly Over | Distance (NM) | Course M°(T°) | Turn | Altitude (ft/FL) | Altitude Description | Speed Limit (Kt) | Navigation Specification | RNP | Dec (ARP 2017) |
|----------------|------------------|------------------------|-----------------|----------------------|----------------------|-------------|-------------------------|-----------------------------|-------------------------|---------------------------------|------------|-----------------------|
| 010 | VC150 | CF | Y | 3.0 | 073 (079.3) | N/A | N/A | N/A | N/A | RNAV1 or RNP1 | 1.0 | 6 E |
| 020 | NINVO | DF | N | N/A | N/A | R | N/A | N/A | N/A | RNAV1 or RNP1 | 1.0 | 6 E |
| 030 | BODUN | TF | N | 45.3 | 197 (203.8) | N/A | N/A | N/A | N/A | RNAV1 or RNP1 | 1.0 | 6 E |

31 ENERO 2019