

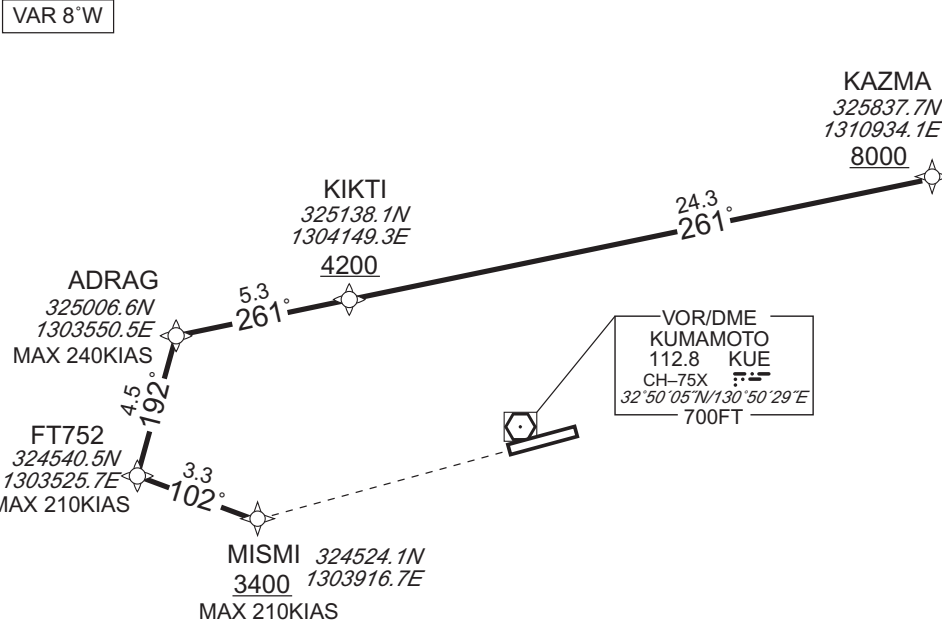
STANDARD ARRIVAL CHART-INSTRUMENT

RJFT / KUMAMOTO RNAV STAR RWY07

KAZMA ARRIVAL

RNAV1

Note 1 ) DME/DME/IRU or GNSS required.  
2 ) RADAR service required.



From KAZMA at or above 8000FT, to KIKTI at or above 4200FT, to ADRAG, to FT752, to MISMI at or above 3400FT.

Critical DME	SGE : 20NM to KIKTI – 8NM to KIKTI 5NM to ADRAG – FT752
	KUE : 12NM to KIKTI – 8NM to KIKTI 5NM to ADRAG – 2NM to ADRAG
DME GAP	8NM to KIKTI – 5NM to ADRAG
Inappropriate Navaids	See AD1.1.6.10.3. Inappropriate NAVAIDs for RNAV1.

CHANGE : ADRAG established. FT751 abolished.

Serial Number	Path Descriptor	Waypoint Identifier	Fly Over	Course °(M°T)	Magnetic Variation	Distance (NM)	Turn Direction	Altitude (FT)	Speed (KIAS)	Vertical Angle	Navigation Specification
001	IF	KAZMA	–	–	-7.6	–	–	+8000	–	–	RNAV1
002	TF	KIKTI	–	261 (253.4)	-7.6	24.3	–	+4200	–	–	RNAV1
003	TF	ADRAG	–	261 (253.2)	-7.6	5.3	–	–	-240	–	RNAV1
004	TF	FT752	–	192 (184.5)	-7.6	4.5	–	–	-210	–	RNAV1
005	TF	MISMI	–	102 (094.8)	-7.6	3.3	–	+3400	-210	–	RNAV1

**INTENTIONALLY LEFT BLANK**