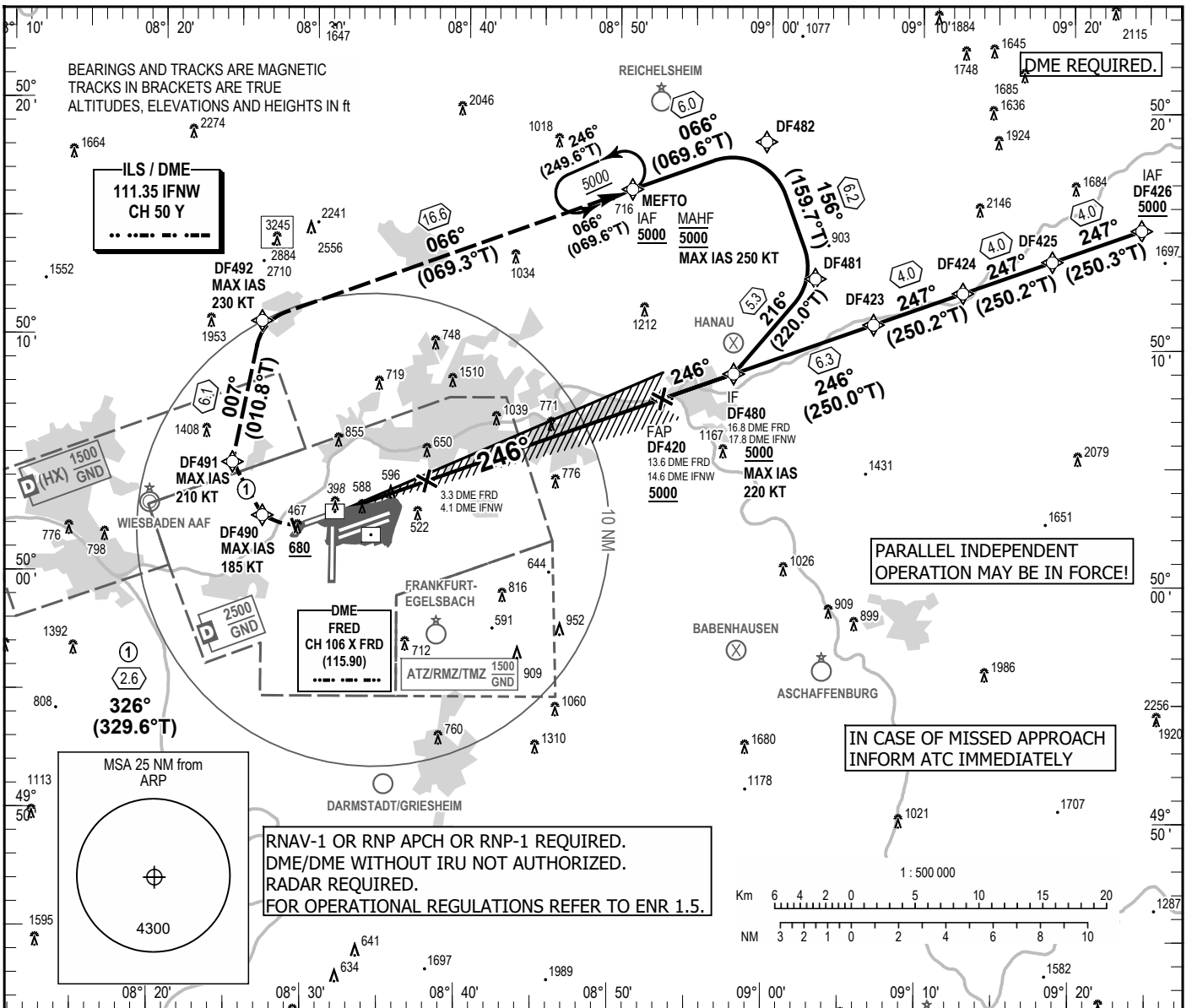


INSTRUMENT APPROACH
CHART - ICAO

VAR 4° E
ELEV 363
OCH RELATED TO THR 25R ELEV 351

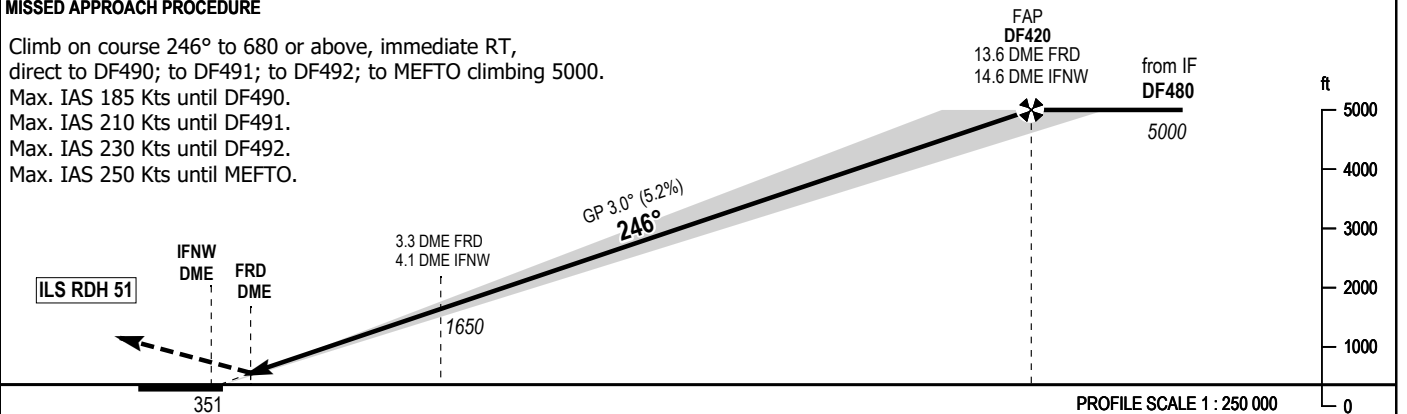
FRANKFURT ATIS	118.030	FRANKFURT GROUND	121.805
LANGEN RADAR	120.805	FRANKFURT APRON	121.855
LANGEN RADAR	125.355	FRANKFURT APRON	121.755
FRANKFURT ARRIVAL	127.280	FRANKFURT APRON	121.955
FRANKFURT TOWER	136.500		

FRANKFURT MAIN
ILS Z CAT II & III
RWY 25R



MISSED APPROACH PROCEDURE

Climb on course 246° to 680 or above, immediate RT, direct to DF490; to DF491; to DF492; to MEFTO climbing 5000.
Max. IAS 185 Kts until DF490.
Max. IAS 210 Kts until DF491.
Max. IAS 230 Kts until DF492.
Max. IAS 250 Kts until MEFTO.



OCA (OCH)	CLIMB GRAD	Altitude (ft)			
		A	B	C	D
ILS/DME CAT I	4.5%	530 (179)	542 (191)	551 (200)	561 (210)
	2.5%	1330 (979)	1340 (989)	1350 (999)	1360 (1009)
ILS/DME CAT II	4.5%	439 (88)	457 (106)	468 (117)	483 (132)

DIST DME IFRW	2	3	4	5	6	7	8	9	10	11	12	13	14
DIST THR	1.8	2.8	3.8	4.8	5.8	6.8	7.8	8.8	9.8	10.8	11.8	12.8	13.8
ALTITUDE	980	1300	1620	1940	2250	2570	2890	3210	3530	3850	4160	4480	4800

GS	kt	80	100	120	140	160	180
DF420 - THR (14.4 NM)	MIN:SEC	10:50	8:40	7:13	6:11	5:25	4:49
Rate of descent (5.2%)	ft/MIN	420	530	640	740	850	960

Minimum Climb Gradient 4.5% (275 ft/NM) up to 2300 due to obstacle. CAT III APPROVED (MNM RVR 75M)

Correction: Callsign, variation and missed approach revised.