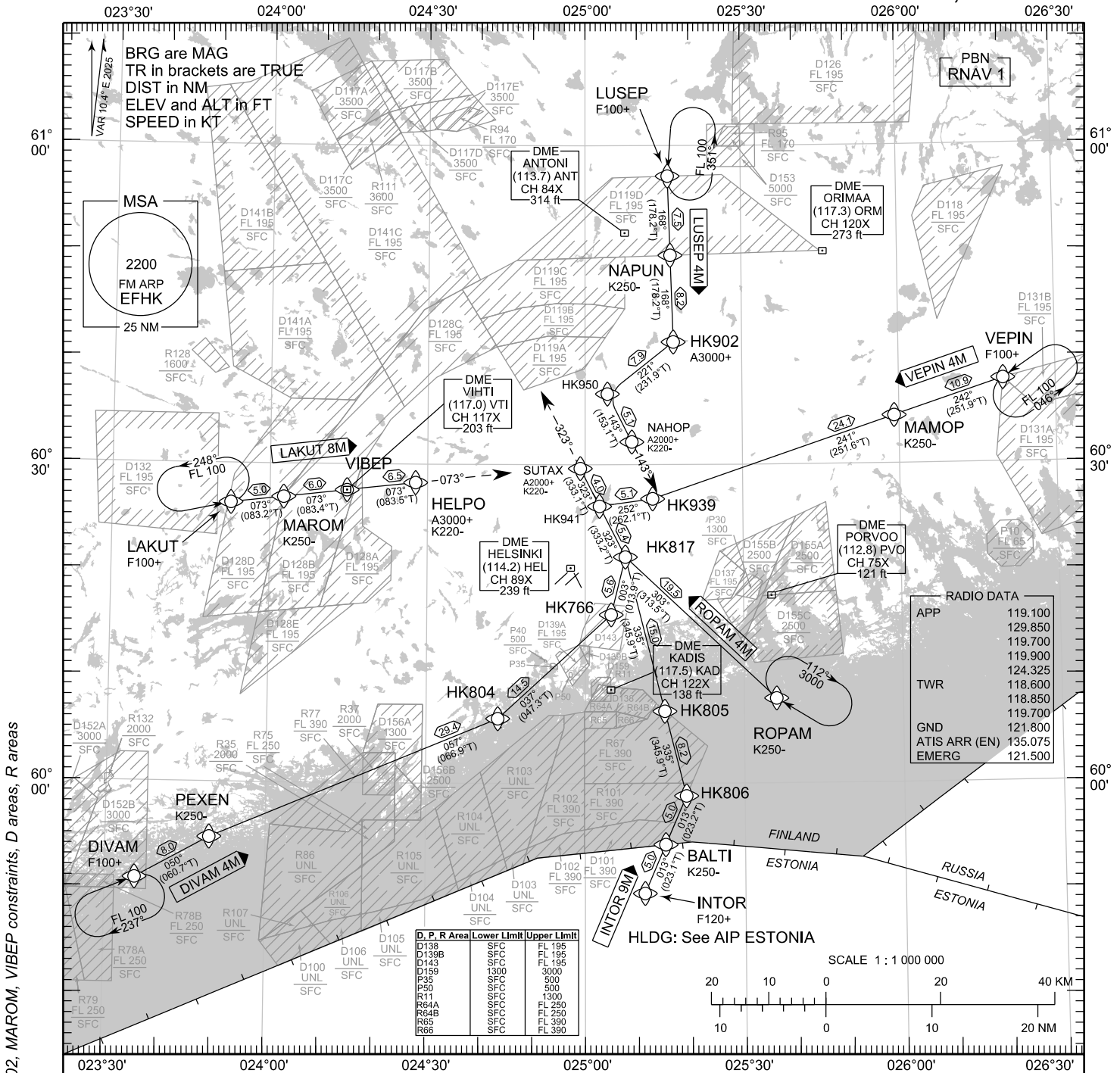


STANDARD ARRIVAL CHART
INSTRUMENT (STAR) - ICAO

TRANSITION ALT
5000

RNAV (DME/DME or GNSS) STAR RWY 15
HELSINKI-VANTAA AERODROME
HELSINKI, FINLAND



CHG: MAG VAR, HELPO, MAROM, VIBEP constraints, D areas, R areas

RNAV STAR RWY 15

DIVAM 4M INTOR 9M LAKUT 8M LUSEP 4M ROPAM 4M VEPIN 4M

DME/DME OPS: MORE THAN 2 DME INPUTS CANNOT BE GUARANTEED AT ALL TIMES.

AREA MNM ALT: SEE AMA INDEX, AIP ENR 6.1 - 3

ROUTES: RNAV PROC CODING ON THE VERSO OF THE CHART.

UNLESS OTHERWISE INSTRUCTED, STAR MUST BE FLOWN ACCORDING TO THE DEFINED WAYPOINT SEQUENCE UNTIL THE LAST WAYPOINT AND THEN CONTINUE ON THE DEFINED COURSE. ATC CLEARANCE TO INBOUND IS ALWAYS REQUIRED.

ATC WILL GIVE DESCENT CLEARANCES.

WPT CONSTRAINTS: ALT / FL / SPEED CONSTRAINTS MUST ALWAYS BE FOLLOWED AS PUBLISHED UNLESS EXPLICITLY CANCELLED BY ATC.

CD OPS: BY ATC CLR IF TFC PERMITS. PLAN CD PATH ACCORDING TO STAR FOLLOWED BY DCT INTERCEPT TO IAF OF THE ACKNOWLEDGED IAP OR AS ADVISED BY ATC.

RCF: SELECT TRANSPONDER CODE 7600.

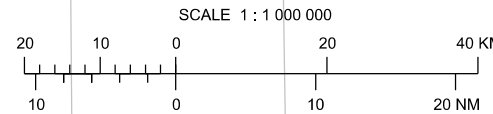
RNAV STAR HAS BEEN GIVEN AND ACKNOWLEDGED: FOLLOW THE STAR UNTIL THE LAST WAYPOINT AND PROCEED TO IAF. IF RADAR VECTORED, CONTINUE 2 MIN ON LAST ASSIGNED AND ACKNOWLEDGED HDG AND ALT/FL, THEN RESUME STAR UNTIL THE LAST WAYPOINT AND PROCEED TO IAF.

RNAV STAR HAS NOT BEEN GIVEN AND ACKNOWLEDGED: CONTINUE 2 MIN ON LAST ASSIGNED AND ACKNOWLEDGED HDG AND ALT/FL, THEN PROCEED TO IAF.

FROM IAF EXECUTE IAP TO THE ACKNOWLEDGED RWY AND VACATE.

AIRCRAFT HAVING TELEPHONE, CALL +358 9 6151 3324.

D, P, R Area			Lower Limit	Upper Limit
D138	SFC	FL 195		
D139B	SFC	FL 195		
D143	SFC	FL 195		
D159	1300	3000		
P49	SFC	500		
P50	SFC	500		
R11	SFC	1300		
R64A	SFC	FL 250		
R64B	SFC	FL 250		
R65	SFC	FL 390		
R66	SFC	FL 390		



EFHK RNAV STAR RWY 15										
RTE NAV SPEC	SEQ NR	P/T	WPT		MAG	GEO TR	DIST NM	Turn Direction	Constraints	
			ID	Flyover					LVL	Speed
DIVAM 4M RNAV 1	010	IF	DIVAM	-	-	-	-		F100+	
	020	TF	PEXEN	-	050°	060.7°T	8.0			K250-
	030	TF	HK804	-	057°	066.9°T	29.4			
	040	TF	HK766	-	037°	047.3°T	14.5			
	050	TF	HK817	-	003°	013.9°T	5.6			
	060	TF	HK941	-	323°	333.2°T	5.4			
	070	TF	SUTAX	-	323°	333.1°T	4.0		A2000+	K220-
080	FM	SUTAX	-	323°	333.1°T	-		A2000+	K220-	

INTOR 9M RNAV 1	010	IF	INTOR	-	-	-	-		F120+	
	020	TF	BALTI	-	013°	023.1°T	5.0			K250-
	030	TF	HK806	-	013°	023.2°T	5.0			
	040	TF	HK805	-	335°	345.9°T	8.2			
	050	TF	HK817	-	335°	345.9°T	15.0			
	060	TF	HK941	-	323°	333.2°T	5.4			
	070	TF	SUTAX	-	323°	333.1°T	4.0		A2000+	K220-
080	FM	SUTAX	-	323°	333.1°T	-		A2000+	K220-	

LAKUT 8M RNAV 1	010	IF	LAKUT	-	-	-	-		F100+	
	020	TF	MAROM	-	073°	083.2°T	5.0			K250-
	030	TF	VIBEP	-	073°	083.4°T	6.0			
	040	TF	HELPO	-	073°	083.5°T	6.5		A3000+	K220-
	050	FM	HELPO	-	073°	083.5°T	-		A3000+	K220-

LUSEP 4M RNAV 1	010	IF	LUSEP	-	-	-	-		F100+	
	020	TF	NAPUN	-	168°	178.2°T	7.5			K250-
	030	TF	HK902	-	168°	178.2°T	8.2		A3000+	
	040	TF	HK950	-	221°	231.9°T	7.9			
	050	TF	NAHOP	-	143°	153.1°T	5.1		A2000+	K220-
	060	FM	NAHOP	-	143°	153.1°T	-		A2000+	

ROPAM 4M RNAV 1	010	IF	ROPAM	-	-	-	-			K250-
	020	TF	HK817	-	303°	313.5°T	19.5			
	030	TF	HK941	-	323°	333.2°T	5.4			
	040	TF	SUTAX	-	323°	333.1°T	4.0		A2000+	K220-
	050	FM	SUTAX	-	323°	333.1°T	-		A2000+	K220-

VEPIN 4M RNAV 1	010	IF	VEPIN	-	-	-	-		F100+	
	020	TF	MAMOP	-	242°	251.9°T	10.9			K250-
	030	TF	HK939	-	241°	251.6°T	24.1			
	040	TF	HK941	-	252°	262.1°T	5.1			
	050	TF	SUTAX	-	323°	333.1°T	4.0		A2000+	K220-
	060	FM	SUTAX	-	323°	333.1°T	-		A2000+	K220-

RNAV Holdings							
ID	INBD TR	INBD MAG	Turn Direction	Speed	MNM HLDG LVL	TIME	DIST NM
DIVAM	067.4°T	057°	Right	K230-	F100	1 MIN	-
LAKUT	077.9°T	068°	Left	K230-	F100	1 MIN	-
LUSEP	181.3°T	171°	Left	K230-	F100	1 MIN	-
ROPAM	302.0°T	292°	Right	K230-	A3000	1 MIN	-
VEPIN	236.1°T	226°	Left	K230-	F100	1 MIN	-

WPT COORD
SEE PAGE EFHK AD 2.15 - 1