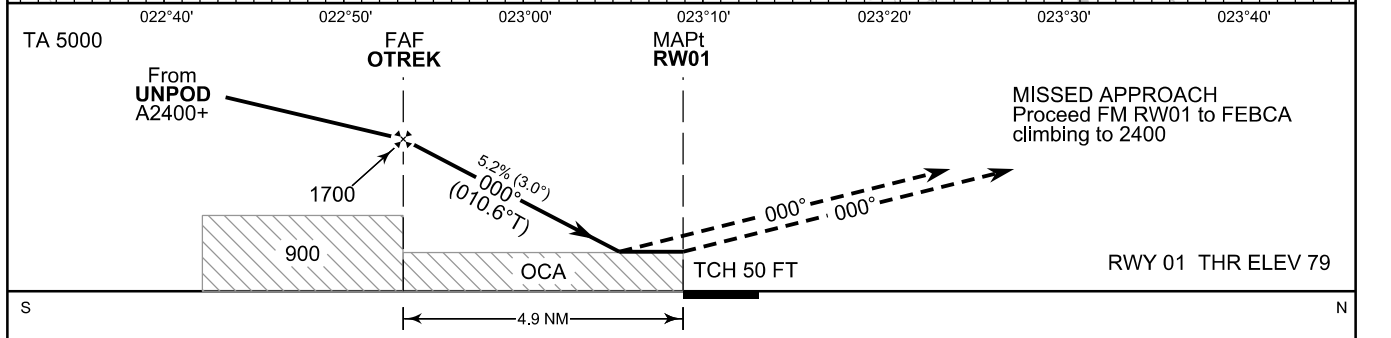
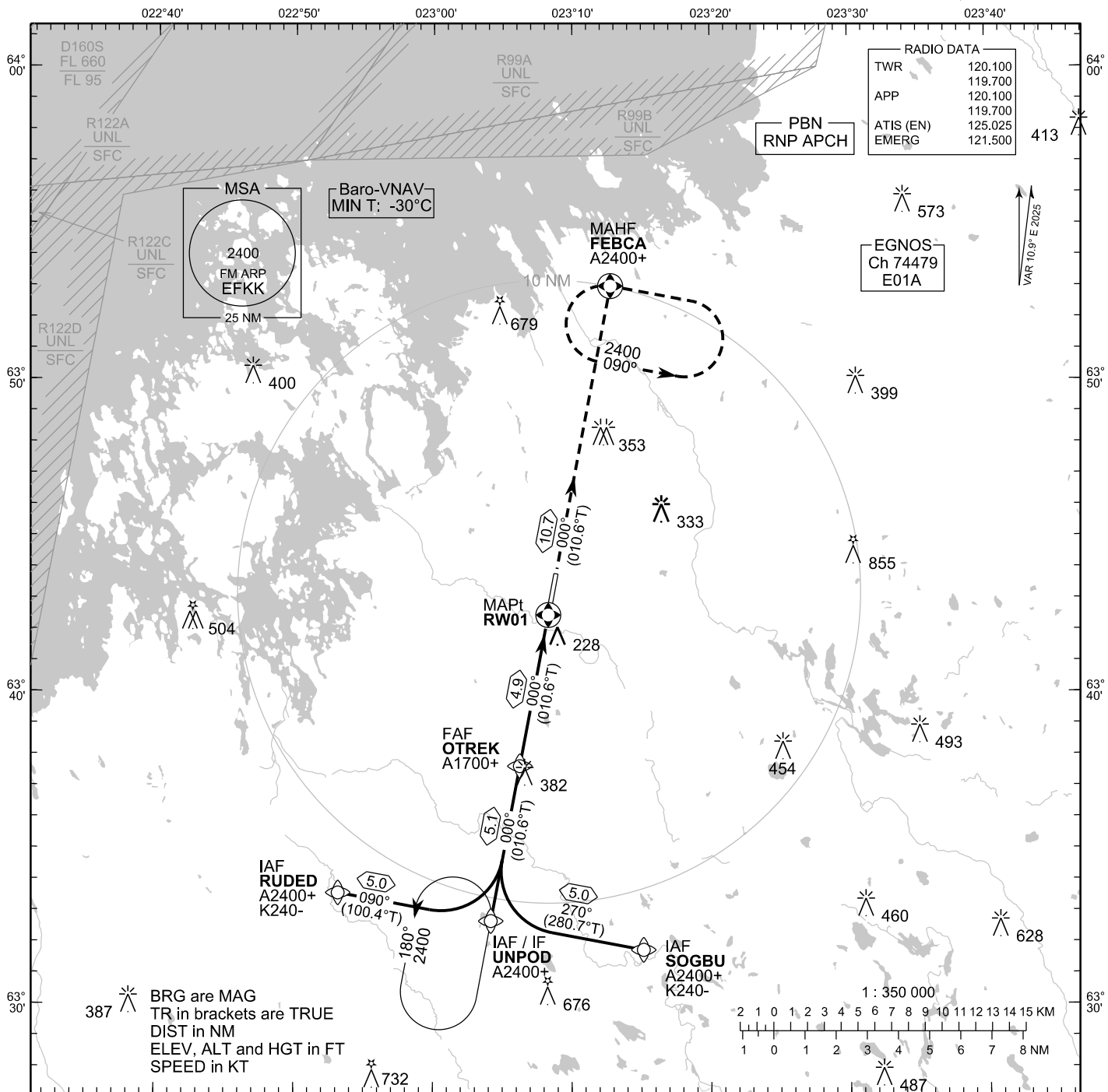


**INSTRUMENT
APPROACH CHART - ICAO**

ELEV 85 FT
HEIGHTS RELATED TO
THR RWY 01 ELEV 79 FT

**RNP RWY 01
KOKKOLA-PIETARSAARI AERODROME
KOKKOLA-PIETARSAARI, FINLAND**

CHG: MAG VAR, MHA, MAHF, Baro-VNAV MIN T, OCA (H), ADDN MOCA



OCA (H)	A	B	C	D
LPV	292 (213)	304 (225)	313 (234)	324 (245)
LNAV / VNAV	324 (245)	336 (257)	345 (266)	355 (276)
LNAV	480 (400)			
Circling	530 (440)	580 (500)	730 (650)	780 (690)

DIST FM THR	5.0 NM	4.0 NM	3.0 NM	2.0 NM		
Altitude (Height)	1720 (1640)	1400 (1320)	1080 (1010)	770 (690)		
	kt	90	100	120	140	160
FAF - MAPt 4.9 NM	min:sec	3:17	2:58	2:28	2:07	1:51
Rate of descent	ft/min	480	530	640	740	850

Timing not authorized for defining the MAPt

EFKK RNP RWY 01										
PROC ID NAV SPEC	SEQ NR	P/T	WPT			MAG	GEO TR	DIST NM	Constraints	
			ID	Type	Flyover				LVL	Speed
H01 RUDED RNP APCH	005	IF	RUDED	IAF	-				A2400+	K240-
	010	TF	UNPOD	IF	-	090°	100.4°T	5.0	A2400+	
	020	TF	OTREK	FAF	-	000°	010.6°T	5.1	A1700+	
	030	TF	RW01	MAPt	Y	000°	010.6°T	4.9		
	040	TF	FEBCA	MAHF	Y	000°	010.6°T	10.7	A2400	

EFKK RNP RWY 01										
PROC ID NAV SPEC	SEQ NR	P/T	WPT			MAG	GEO TR	DIST NM	Constraints	
			ID	Type	Flyover				LVL	Speed
H01 UNPOD RNP APCH	010	IF	UNPOD	IAF/IF	-				A2400+	
	020	TF	OTREK	FAF	-	000°	010.6°T	5.1	A1700+	
	030	TF	RW01	MAPt	Y	000°	010.6°T	4.9		
	040	TF	FEBCA	MAHF	Y	000°	010.6°T	10.7	A2400	

EFKK RNP RWY 01										
PROC ID NAV SPEC	SEQ NR	P/T	WPT			MAG	GEO TR	DIST NM	Constraints	
			ID	Type	Flyover				LVL	Speed
H01 SOGBU RNP APCH	005	IF	SOGBU	IAF	-				A2400+	K240-
	010	TF	UNPOD	IF	-	270°	280.7°T	5.0	A2400+	
	020	TF	OTREK	FAF	-	000°	010.6°T	5.1	A1700+	
	030	TF	RW01	MAPt	Y	000°	010.6°T	4.9		
	040	TF	FEBCA	MAHF	Y	000°	010.6°T	10.7	A2400	

RNAV Holdings							
ID	INBD TR	INBD MAG	Turn Direction	Speed	MNM HLDG LVL	TIME	DIST NM
UNPOD	010.6°T	000°	Left	K230-	A2400	1 MIN	-
FEBCA	280.9°T	270°	Left	K230-	A2400	1 MIN	-

WPT COORD
SEE PAGE EFKK AD 2.15 - 1

FINAL APPROACH PARAMETERS			
LNAV Gradient	Baro-VNAV		TCH
	VPA	MNM T	
5.24 % (3.00°)	3.00°	-30°C	50 FT

SBAS DATA	
Approach ID	E01A
Service Provider	EGNOS
CRC remainder	05 20 68 C1
Channel number	74479
Data Block	SEE EFKK AD 2.15 - 3