

**INSTRUMENT APPROACH CHART - ICAO PLAN VIEW SCALE: 1:350 000**

SANDNESSJØEN

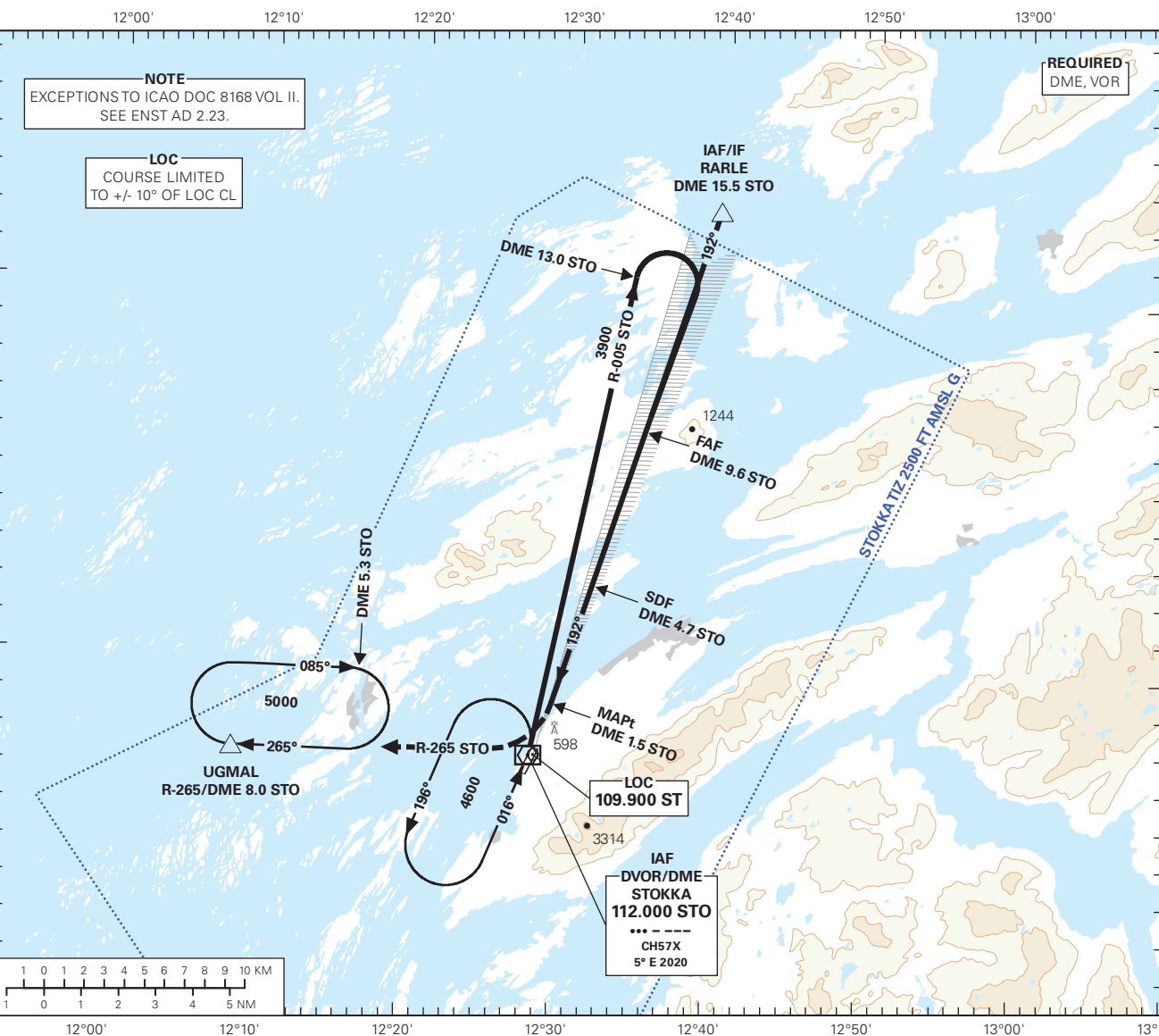
**STOKKA**

**LOC RWY 20**

TRANSITION ALTITUDE

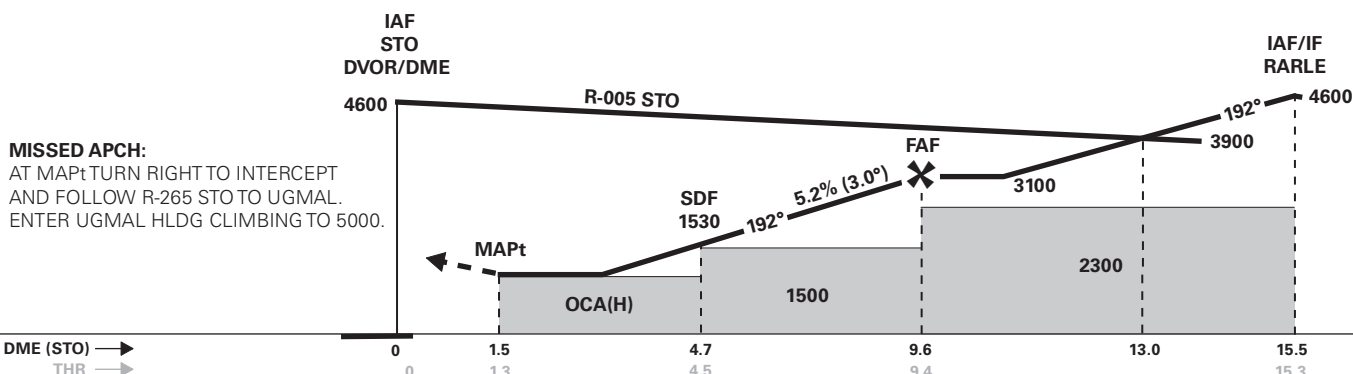
7000

APP: 127.900	AD ELEV: 58	
AFIS: 120.300	THR ELEV: 54	DIST IN NM
VDF: 120.300	HGT RELATED TO THR RWY 20	ELEV, ALT AND HGT IN FT
CIRCLING HGT RELATED TO AD ELEV		
BEARINGS ARE MAGNETIC - VAR: 5° E (2020)		



DIST TO STO	10	9	8	7	6	5	4	3
ALT (HGT)	-	2900 (2846)	2580 (2526)	2260 (2206)	1950 (1896)	1630 (1576)	1310 (1256)	990 (936)

PROCEDURE OFFSET 8°



**MISSED APCH:**  
AT MAPt TURN RIGHT TO INTERCEPT AND FOLLOW R-265 STO TO UGMAL. ENTER UGMAL HLDG CLIMBING TO 5000.

CAT OF ACFT		A	B	C	D
OCA(H) STRAIGHT - IN	2.5%*	1070 (1016)	-	-	-
	3.0%*	770 (716)	-	-	-
CIRCLING		1070 (1012)	-	-	-

NOTE: CIRCLING W OF AD ONLY. \* MNM MISSED APCH CLIMB GRADIENT.

ATS AIRSPACE CLASSIFICATION: REF ENR 1.4.

CHANGES: THR ELEV, EDITORIALS.