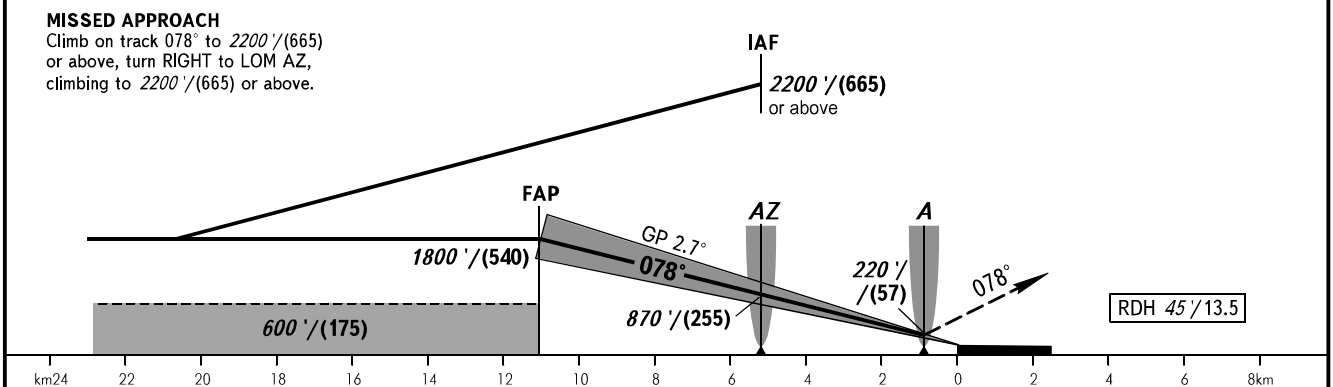
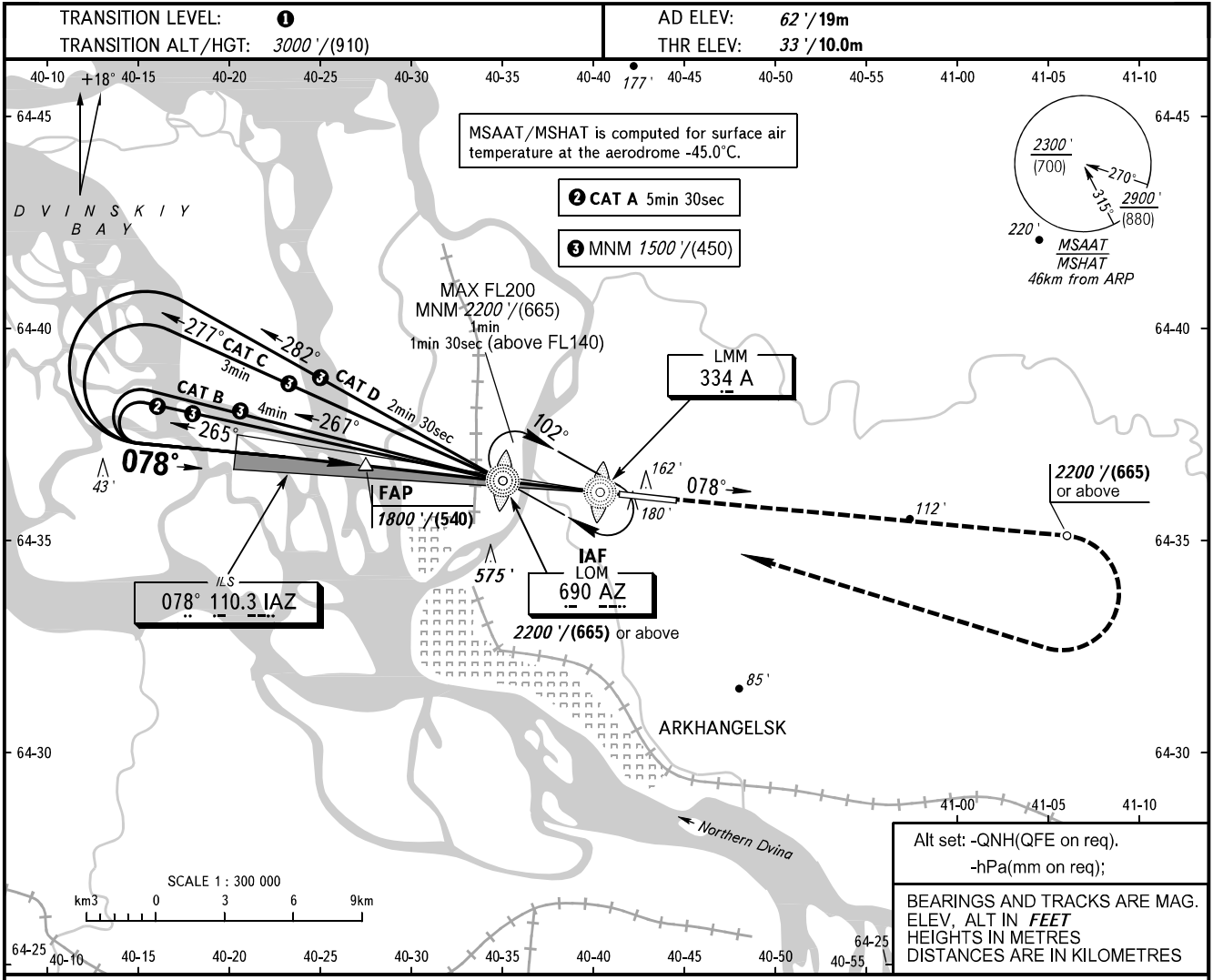


**INSTRUMENT  
APPROACH  
CHART - ICAO**

ARKHANGELSK APPROACH **122.000**  
ARKHANGELSK TOWER **121.800**

**ARKHANGELSK, RUSSIA**  
TALAGI  
ILS CAT I RWY 08



OCA(H)		A	B	C	D	<b>WARNING</b> Visual manoeuvring within sector 087°-250° is PROHIBITED.  ① TRANSITION LEVEL: - FL040 when QNH is 1013 hPa (760mm mercury column) or above; - FL050 when QNH is 977 hPa (733mm mercury column) or above, but less than 1013 hPa (760mm mercury column); - FL060 when QNH is less than 977 hPa (733mm mercury column).					
Straight-in Approach	CAT I	237' (204') (63)	247' (214') (66)	257' (223') (68)	266' (233') (72)						
	Circling	480' (420') (130)	560' (500') (155)	970' (910') (280)	970' (910') (280)						
GROUND SPEED		km/h	150	180	210	240	270	300	330	360	390
RATE OF DESCENT		m/s	1.9	2.3	2.7	3.1	3.5	3.9	4.3	4.7	5.0
		ft/min	374	453	532	610	689	768	847	925	984

CHANGE: New chart