

CLOVIS, NEW MEXICO

# RNAV (GPS) RWY 13

APCH CRS	Rwy Idg	<b>8196</b>
<b>128°</b>	TDZE	<b>4294</b>
	Arprt Elev	<b>4295</b>

AL-512 (USAF)

CANNON AFB (KCVS)

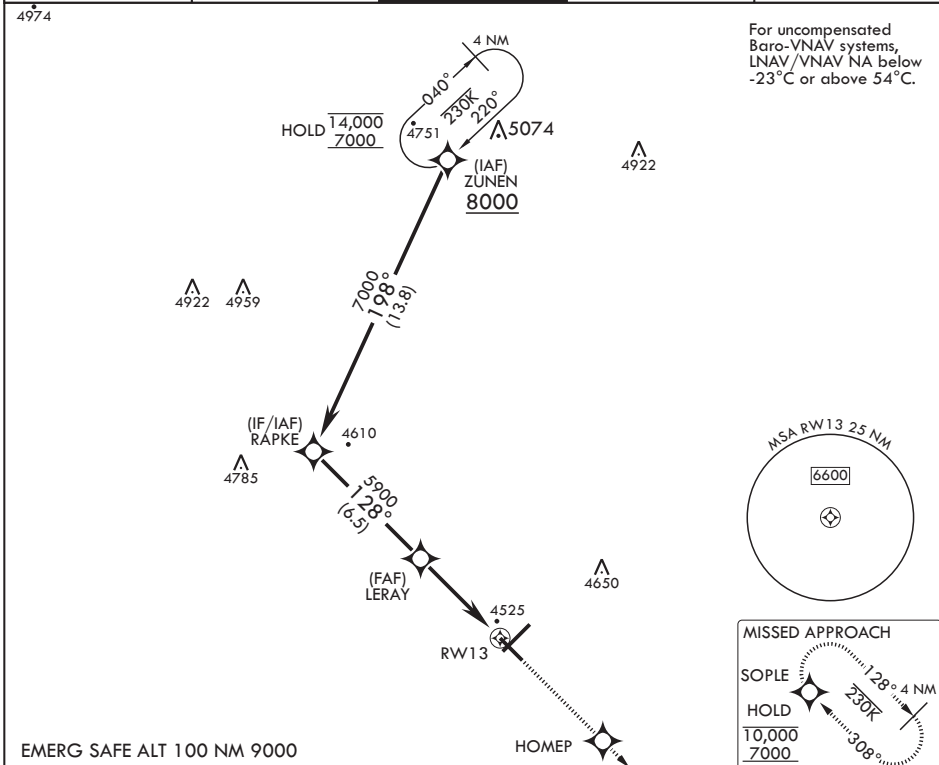
RNP APCH

▼ \* When ALS inop increase vis to 1 3/8 miles.  
 \*\* When ALS inop, increase CAT AB vis to 1 mile, CAT CDE vis to 1 1/2 miles.

SSALR

MISSED APPROACH: Climb to 7000 direct HOMEP, then track 128° to SOPLE and hold.

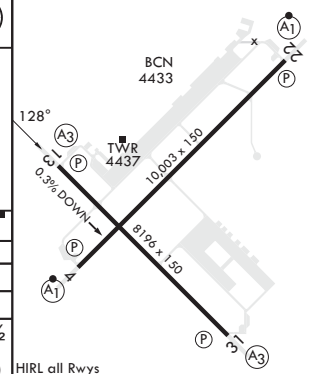
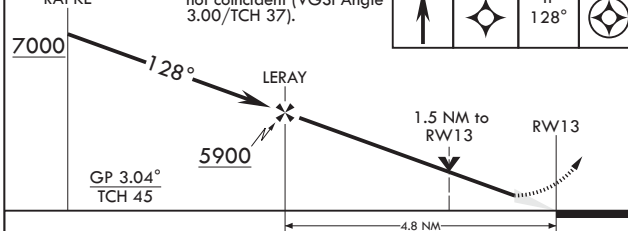
ATIS <b>119.1 269.9</b>	CANNON APP CON <b>118.425 352.1</b>	TOWER <b>120.4 270.25</b>	GND CON <b>121.9 275.8</b>	CLNC DEL <b>120.2 293.225</b>
----------------------------	--	------------------------------	-------------------------------	----------------------------------



For uncompensated Baro-VNAV systems, LNAV/VNAV NA below -23°C or above 54°C.

EMERG SAFE ALT 100 NM 9000

RAPKE	VGSI and RNAV glidepath not coincident (VGSI Angle 3.00/TCH 37).	7000	HOMEP	tr 128°	SOPLE	ELEV 4295	TDZE 4294
-------	--	------	-------	---------	-------	-----------	-----------



CATEGORY	A	B	C	D	E
LNAV/VNAV DA*	4766-1		472	(500-1)	
LNAV MDA**	4820-1/2 526 (600-1/2)		4820-1	526	(600-1)
<b>C</b> CIRCLING	4840-1 545 (600-1)		4860-1 1/2 565 (600-1 1/2)	5000-2 1/4 705 (800-2 1/4)	5020-2 1/2 725 (800-2 1/2)

HIRL all Rwy's

CLOVIS, NEW MEXICO

34°23'N - 103°19'W

CANNON AFB (KCVS)

Amdt 4 07OCT21

# RNAV (GPS) RWY 13

SW-1, 20 MAR 2025 to 17 APR 2025

SW-1, 20 MAR 2025 to 17 APR 2025