

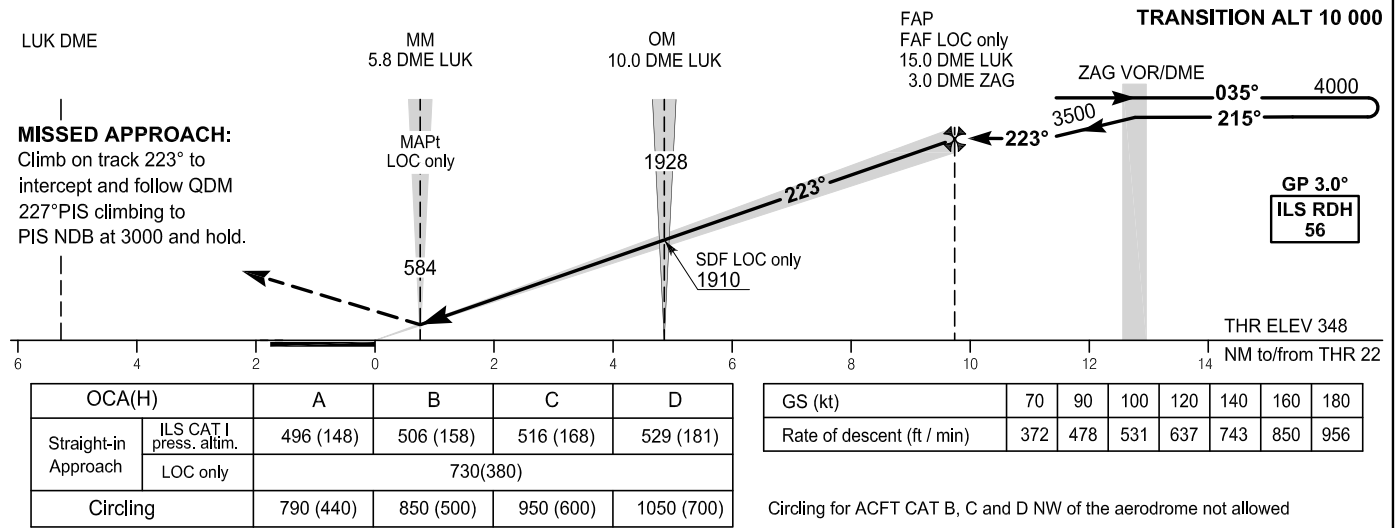
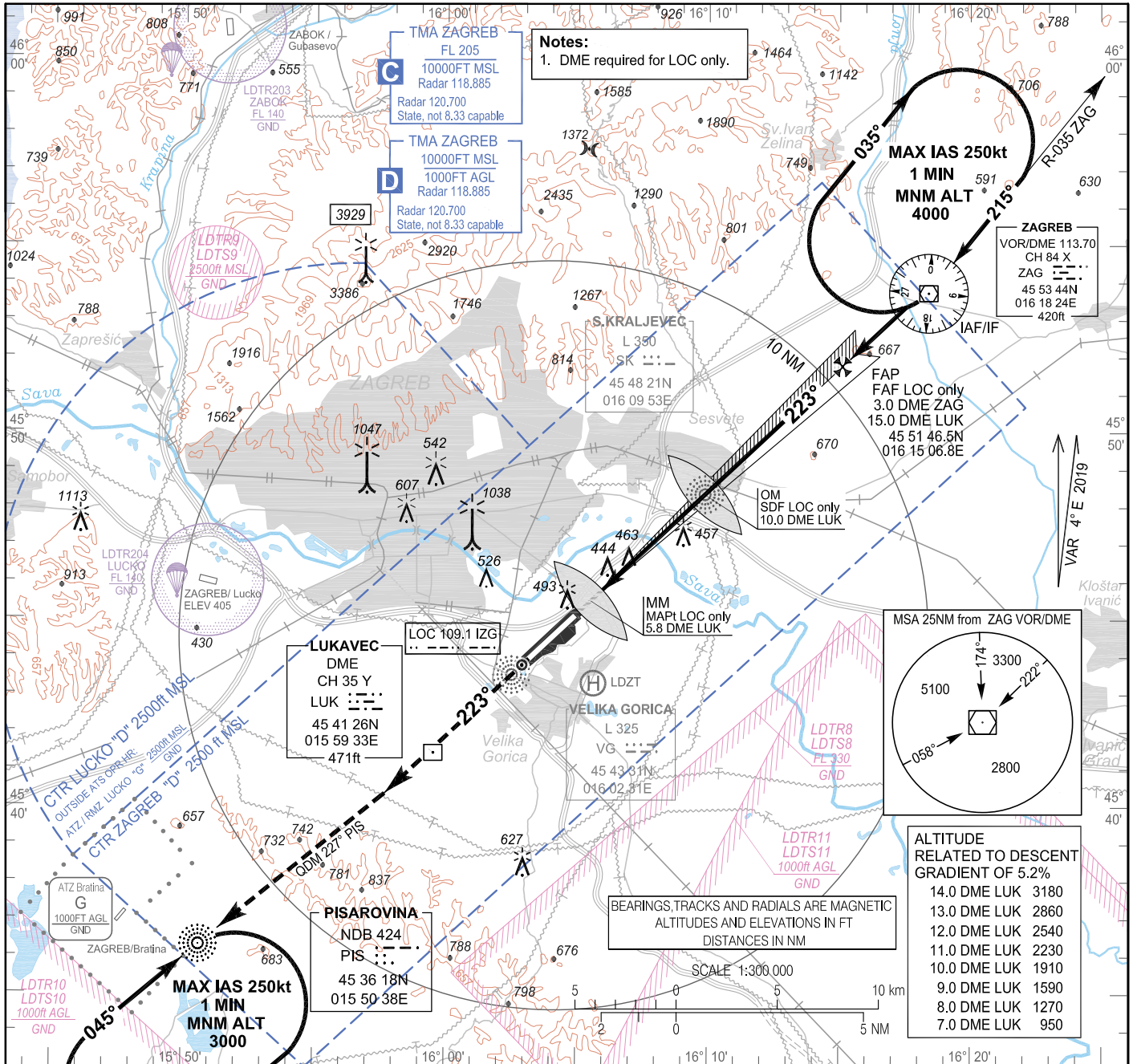
INSTRUMENT APPROACH
CHART-ICAO

AD ELEV 353
HEIGHTS RELATED
TO THR 22 ELEV 348

ZAGREB ATIS 124.575
ZAGREB RADAR 118.885
ZAGREB RADAR 120.700 State, not 8.33 capable
ZAGREB TOWER 118.300

ZAGREB / Franjo Tuđman (LDZA)

ILS y or LOC y RWY 22



OCA(H)	A	B	C	D
Straight-in Approach	496 (148)	506 (158)	516 (168)	529 (181)
Circling	790 (440)	850 (500)	950 (600)	1050 (700)

GS (kt)	70	90	100	120	140	160	180
Rate of descent (ft / min)	372	478	531	637	743	850	956

Circling for ACFT CAT B, C and D NW of the aerodrome not allowed

CHANGE: TMA classification vertical limits; Parachuting zones; Editorial.

ZAGREB / Franjo Tuđman (LDZA)

ILS y or LOC y RWY 22

AERONAUTICAL DATABASE REQUIREMENTS

Conventional procedure essential fixes/points

ILS y or LOC y RWY 22

LOC only - final approach descent angle: 3.00°

Fix identification	Coordinates	True bearing or ARC distance providing track	True bearing or distance providing intersection
IAF/IF (ZAG VOR/DME)	45 53 44.01N 016 18 24.11E	-	-
FAF LOC only	45 51 46.5N 016 15 06.8E	226.81° (IZG LOC)	15.02 DME LUK 3.02 DME ZAG
SDF LOC only (OM 22)	45 48 20.56N 016 09 52.34E	226.81° (IZG LOC)	10.00 DME LUK
MAPt LOC only (MM 22)	45 45 29.91N 016 05 31.84E	226.81° (IZG LOC)	5.84 DME LUK

CHANGE: TMA classification vertical limits; Parachuting zones; Editorial.