

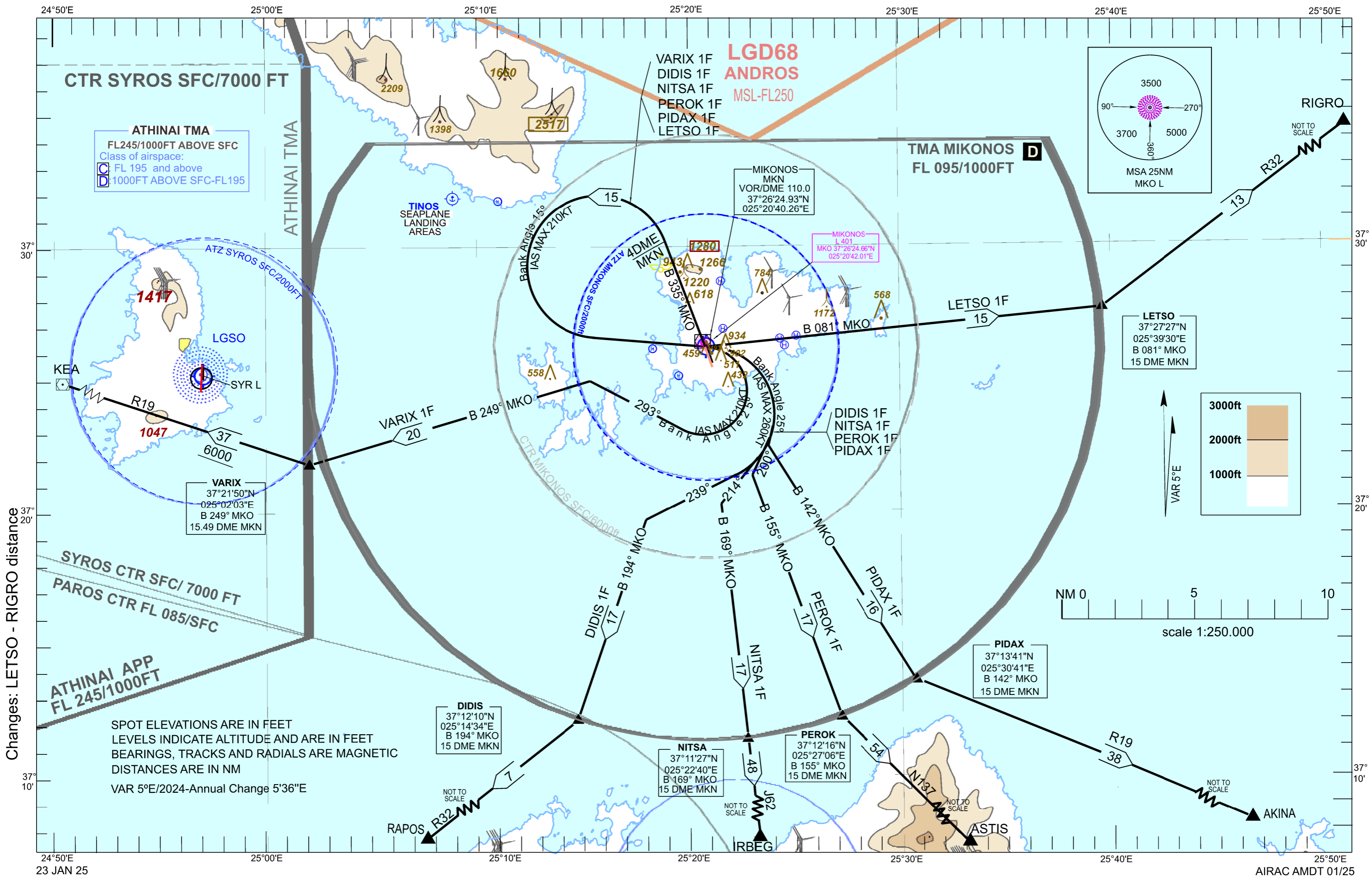
STANDARD DEPARTURE CHART - INSTRUMENT (SID) - ICAO

TRANSITION ALTITUDE 6000 ft

ATIS 128.855 TWR 119.875 APP 118.750

MIKONOS L/DME RWY 34

VARIX 1F, DIDIS 1F, NITSA 1F, PEROK 1F, PIDAX 1F, LETSO 1F



Changes: LETSO - RIGRO distance

MIKONOS
SIDs L/DME RWY 34

VARIX 1F, DIDIS 1F, NITSA 1F, PEROK 1F, PIDAX 1F, LETSO 1F

GENERAL

1. When for these SIDs an altitude higher than the transition altitude is designated, then ATC unit shall specify an equivalent FLIGHT LEVEL.
2. For these SIDs a minimum pdg (Procedure Design Gradient) of to 6.0% (365ft/nm) up to 1600ft due to obstacle of 1220ft of altitude (Bearing 342 and distance 2.62nm from DER 34) is required and then up to the minimum en-route altitude for airspace restriction.

VARIX 1F

“Climb on Bearing 335 from MKO to Bearing 335 MKO / 4 DME MKN Fix, turn left (IAS MAX 210kt, Bank angle 15⁰) to MKO at 6000ft or above. After MKO turn right (IAS MAX 210kt, Bank angle 25⁰) to track 293⁰, intercept and follow Bearing 249 from MKO to VARIX, to join AWY R19.”

DIDIS 1F

“Climb on Bearing 335 from MKO to Bearing 335 MKO / 4 DME MKN Fix, turn left (IAS MAX 210kt, Bank angle 15⁰) to MKO at 6000ft or above. After MKO turn right (IAS MAX 260kt, Bank angle 25⁰) to track 239⁰, intercept and follow Bearing 194 from MKO to DIDIS, to join AWY R32.”

NITSA 1F

“Climb on Bearing 335 from MKO to Bearing 335 MKO / 4 DME MKN Fix, turn left (IAS MAX 210kt, Bank angle 15⁰) to MKO at 6000ft or above. After MKO turn right (IAS MAX 260kt, Bank angle 25⁰) to track 214⁰, intercept and follow Bearing 169 from MKO to NITSA, to join AWY J62.”

PEROK 1F

“Climb on Bearing 335 from MKO to Bearing 335 MKO / 4 DME MKN Fix, turn left (IAS MAX 210kt, Bank angle 15⁰) to MKO at 6000ft or above. After MKO turn right (IAS MAX 260kt, Bank angle 25⁰) to track 200⁰, intercept and follow Bearing 155 from MKO to PEROK, to join AWY N137.”

PIDAX 1F

“Climb on Bearing 335 from MKO to Bearing 335 MKO / 4 DME MKN Fix, turn left (IAS MAX 210kt, Bank angle 15⁰) to MKO at 6000ft or above. After MKO turn right (IAS MAX 260kt, Bank angle 25⁰), intercept and follow Bearing 142 from MKO to PIDAX, to join AWY R19.”

LETSO 1F

“Climb on Bearing 335 from MKO to Bearing 335 MKO / 4 DME MKN Fix, turn left (IAS MAX 210kt, Bank angle 15⁰) to MKO at 6000ft or above. After MKO intercept and follow Bearing 081 from MKO to LETSO, to join AWY R32.”