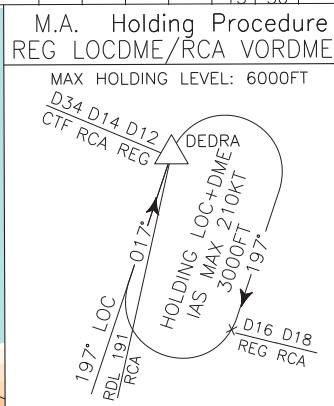
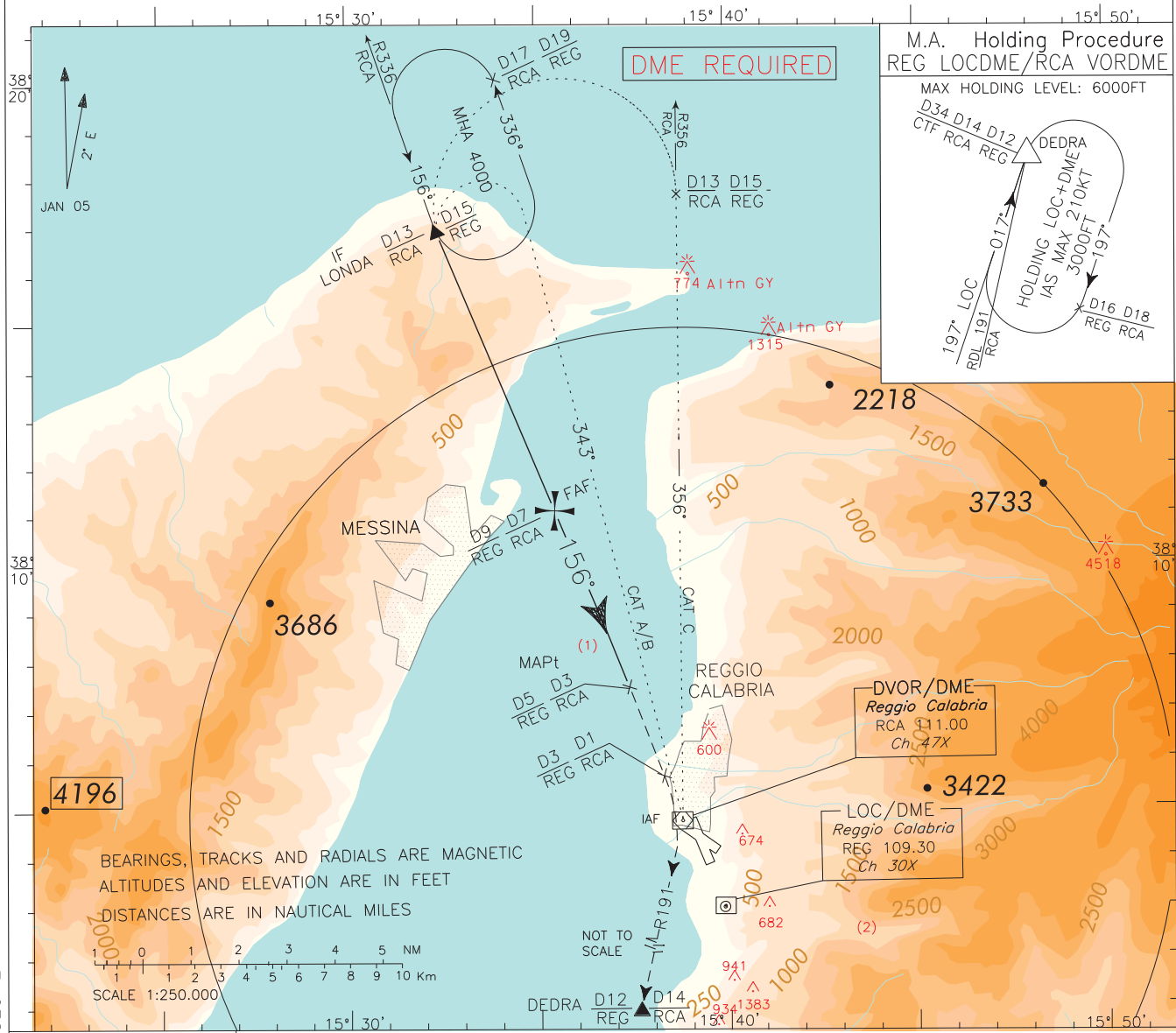


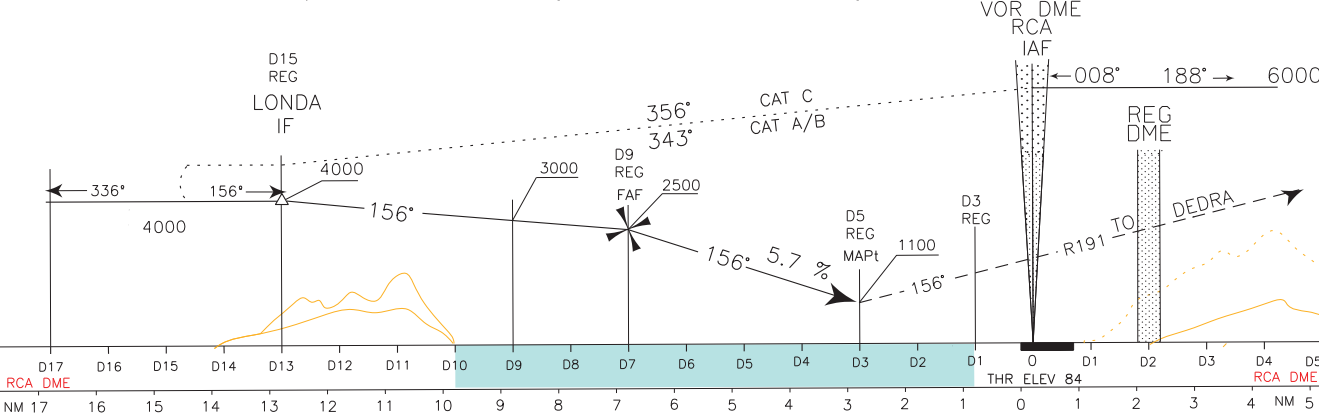
ICAO - INSTRUMENT APPROACH CHART

CHANGE: INITIAL APPROACH SEGMENT FROM RCA VOR ADDED. RCA NDB WITHDRAWN. RENUMBERED PAGE DOC.8168-ED.5-2006 AMDT 4

<p><b>WARNING:</b> In case of circling RWY 33, PAPI indications strictly mandatory and lighting visual AIDS in working order. (See Visual Manoeuvring Rwy 33 - AD2 LICR 5-3)</p>	APP Reggio APP	120.275	AD ELEV	LICR	REGGIO CALABRIA VOR - Z RWY 15
	TWR Reggio TWR	118.250	95		



TRANSITION ALT 7000 MISSED APPROACH : Continue on track 156° until 1 NM RCA DME (or 3NM REG DME) then turn right (IAS MAX 200 kt) to join RDL 191 RCA VOR climbing to 3000 ft direct to DEDRA Holding Pattern to be reached at 3000 ft.



LANDING MINIMA (see WARNING "1")		<p>REMARK1: Final approach track offset 5.4° from runway centerline. Runway centerline intercepted 2018m from Threshold 15. WARNING 1: IFR operations allowed only with following MINIMA: VISIBILITY 1500m, CEILING 1500ft. Landing allowed only with minimum SLANT VISIBILITY 5000m. WARNING 2: Circling allowed West of the aerodrome only.</p>	GS	FT/MIN	DIST	ALT (HGT)	<p>MNM SECT ALT RCA VOR</p>	
CATEGORY	A - B - C		80	460	6DME	2140 (2056)		
OCA (OCH)	VIS		CEILING	100	580	5DME		1800 (1716)
1100 (1016)	5000 M		1500 FT	120	690	4DME		1450 (1366)
CIRCLING (see WARNING "2")	1500 (1405)		140	810	3DME	1100 (1016)		
			160	920	2DME	760 (676)		