

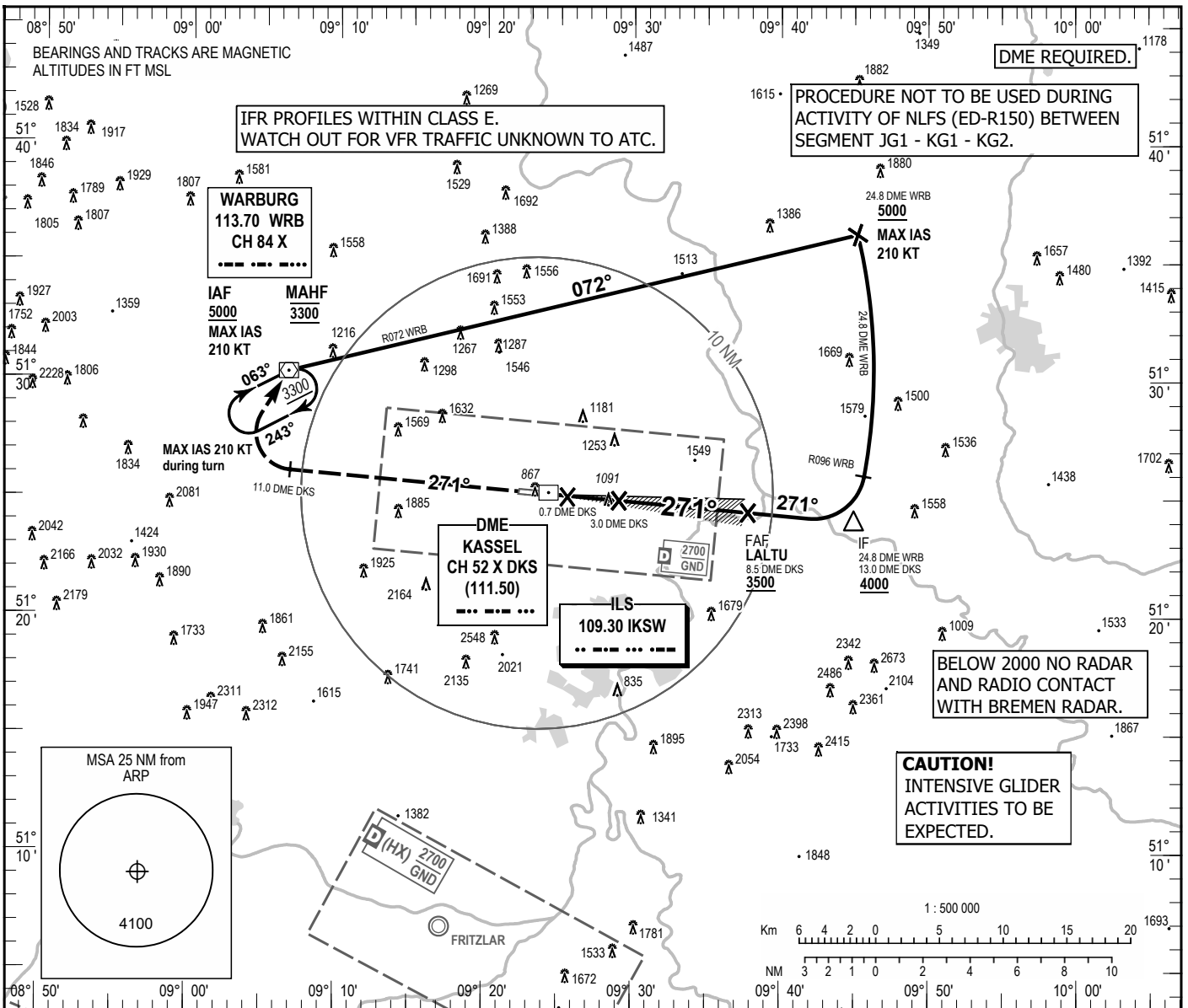
INSTRUMENT  
APPROACH  
CHART - ICAO

VAR 4° E

ELEV 860  
OCH RELATED TO  
THR 27 ELEV 802

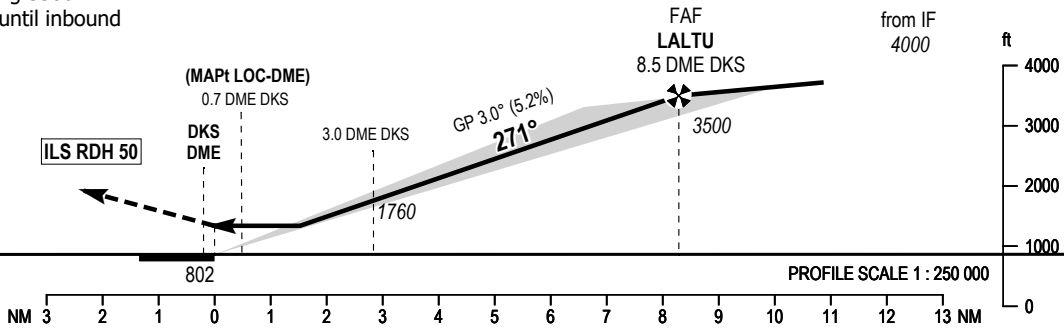
KASSEL ATIS	129.205
BREMEN RADAR	126.655
KASSEL TOWER	118.105
KASSEL GROUND	121.905

KASSEL-CALDEN  
ILS Y CAT II & III or LOC  
RWY 27



**MISSED APPROACH PROCEDURE**

Climb on course 271° to 11.0  
DME DKS; RT, direct to WRB  
DVOR/DME climbing 3300.  
Max. IAS 210 Kts until inbound  
WRB.



OCA (OCH)	A	B	C	D
ILS/DME CAT I	968 (166)	981 (179)	989 (187)	999 (197)
ILS/DME CAT II	880 (78)	898 (96)	909 (107)	924 (122)
LOC-DME	1340 (540)	1340 (540)	1340 (540)	1340 (540)

CAT IIIA AND CAT IIIB (MNM RVR 75M) APPROVED

DIST DME DKS	1	2	3	4	5	6	7	8
DIST THR	0.8	1.8	2.8	3.8	4.8	5.8	6.8	7.8
ALTITUDE	1120	1440	1760	2080	2390	2710	3030	3350

LOC-DME: Timing not authorized for defining the MAPt.

GS	kt	80	100	120	140	160	180
LALTU - THR (8.3 NM)	MIN:SEC	6:14	4:59	4:09	3:33	3:07	2:46
Rate of descent (5.2%)	ft/MIN	420	530	640	740	850	960

Correction: Completely revised.