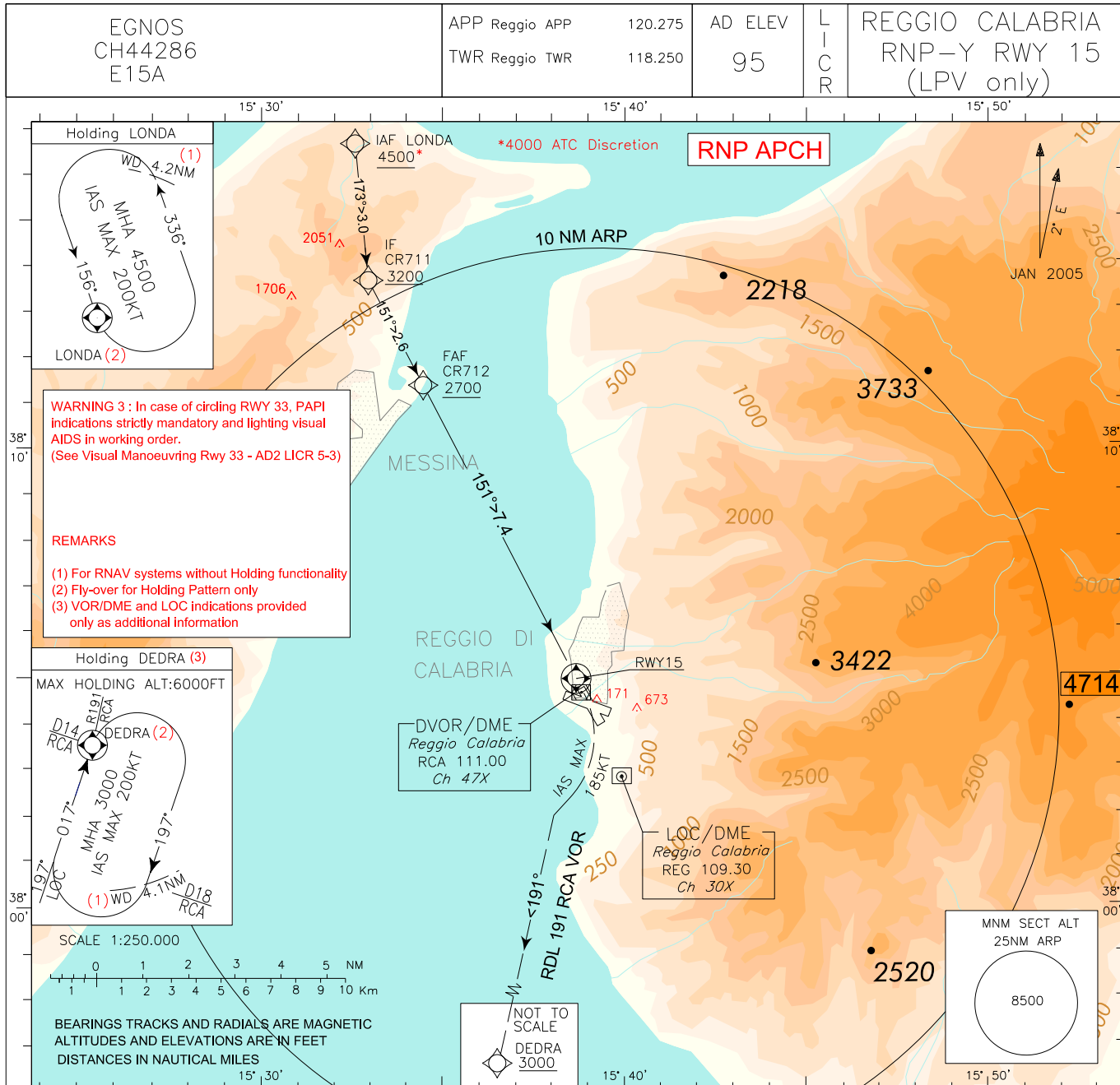


ICAO - INSTRUMENT APPROACH CHART

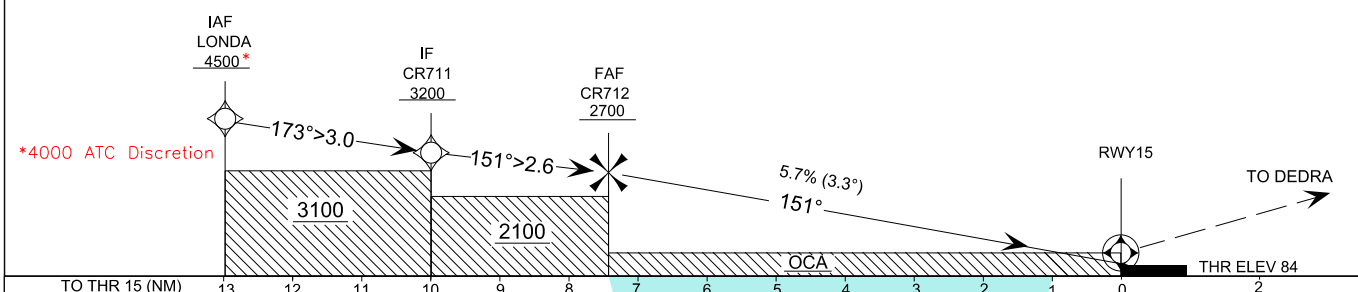


DOC. 8168 - ED.6 2014 - AMDT 7

CHANGE: RENUMBERED PAGE

TRANSITION ALT 7000
TCH 15 M

MISSED APPROACH: Climbing to 3000FT, proceed to RWY15 then turn right (IAS MAX 185KT) on course 191° (RDL 191 RCA VOR) bound to DEDRA missed approach (3) Holding pattern.



LANDING MINIMA (see WARNING 1)		A	B	C	VIS	CEILING	FT PER MIN		GS		FAF - RWY15	RWY15 DIST.	ALT (HGT)
STRAIGHT IN APPROACH	LPV missed approach climb gradient 4.2%	630 (546)	642 (558)	650 (566)	5000 M	1500 FT	1050	180	7.4 NM	7.0	2540 (2456)		
		630 (546)	642 (558)	650 (566)	5000 M	1500 FT	930	160	2 : 28	6.0	2190 (2106)		
	LPV missed approach climb gradient 2.5%	720 (636)	732 (648)	740 (656)	WARNING 1: IFR operations allowed only with following MINIMA: VISIBILITY 1500m, CEILING 1500ft. Landing allowed only with minimum SLANT VISIBILITY 5000 M.		820	140	2 : 46	5.0	1840 (1756)		
		720 (636)	732 (648)	740 (656)	WARNING 2: Circling allowed WEST of the aerodrome only.		700	120	3 : 10	4.0	1490 (1406)		
CIRCLING (see WARNING 2)		1500 (1405)					580	100	3 : 42	3.0	1140 (1056)		
							460	80	4 : 26	2.0	790 (706)		
									5 : 33				

TABULAR DESCRIPTION**RNP Y RWY15 (LPV only) – Instrument Approach procedure**

Serial Number	Path Terminator	Waypoint Identifier	Fly Over	Course °M(°T)	Magnetic Variation	Distance (NM)	Turn Direction	Altitude (ft)	Speed Limit (kt)	VPA°/ TCH (m)	Navigation Specification
010	IF	LONDA	-	-	-	-	-	+4500*	-	-	RNP APCH
020	TF	CR711	-	173° (174.9°)	-	3.0	-	+3200	-	-	RNP APCH
030	TF	CR712	-	151° (152.7°)	-	2.6	-	+2700	-	-	RNP APCH
040	TF	RWY15	Y	151° (152.8°)	+2.0	-	-	@134(3)	-	3.3°/15	RNP APCH
050	CF	DEDRA	-	191° (192.9°)	-	-	-	+3000	-185	-	RNP APCH

*4000ft ATC Discretion

Path Terminator	Waypoint Identifier	Inbound Course °M (°T)	Leg Distance (NM) (1)	Timing(min.)/ Waypoint Distance (NM) (2)	Turn Direction	Minimum Altitude (FT)	Maximum Altitude (FT)	Speed Limit (kt)	Magnetic Variation (°)	Navigation Specification
HM	LONDA	156 (158.0)	N.A.	- / 4.2	L	4500	-	-200	+2.0	RNP1
HM	DEDRA	017 (019.0)	N.A.	- / 4.1	R	3000	6000	-200	+2.0	RNP1

(1) RNAV system with holding functionality

(2) RNAV system without holding functionality

(3) THR Altitude plus TCH; for MA transition the value is according to the minima LPV.

WAYPOINT LIST**RNP Y RWY15 (LPV only)**

Waypoint Identifier	Coordinates
CR711	38°13'40.02" N 015°32'58.15" E
CR712	38°11'22.80" N 015°34'27.77" E