

INSTRUMENT APPROACH CHART-ICAO

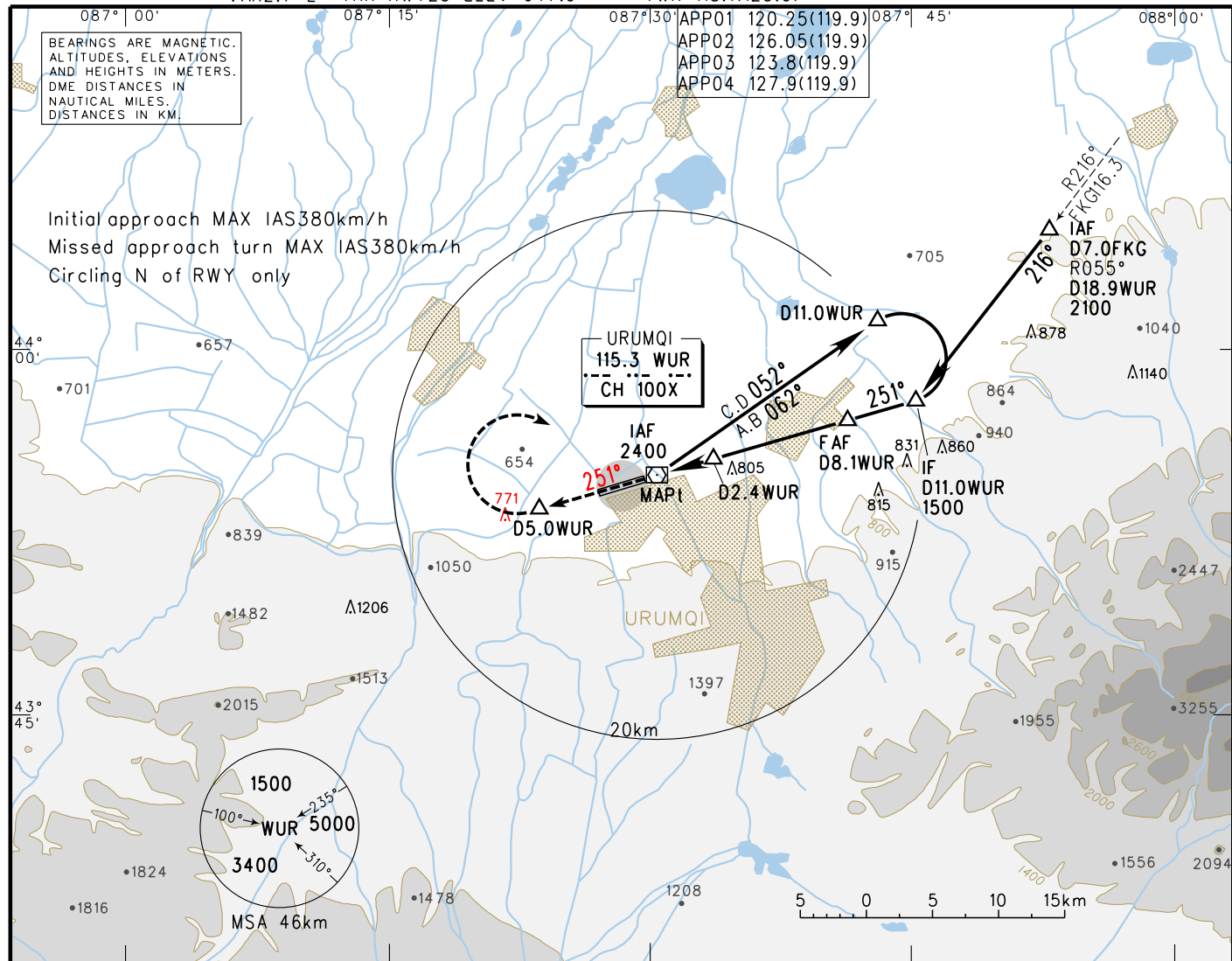
VAR 2.7° E

AERODROME ELEV 647.9
THR RWY25 ELEV 647.9

D-ATIS(ARR) 126.8
TWR 118.1(125.0)

ZWWW URUMQI/Diwopu

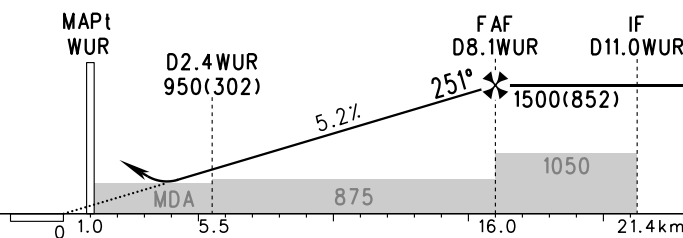
VOR/DME z RWY25



DME (WUR) (NM)	1	2	3	4	5	6	7	8
ALT (m)		908	1005	1102	1200	1297	1394	1491

MISSED APPROACH
Climb straight ahead to D5.0WUR, contact ATC, or turn right to WUR, at ALT 1500.

TL 3600
TA 3000
3300 (QNH ≥ 1031hPa)
2700 (QNH ≤ 979hPa)



VOR/DME	MDA(H)				FAF - MAPt 15.0km							
	A	B	C	D	GS in kt	80	100	120	140	160	180	
MDA(H)	870(223)											
VIS	3400											
CIRCLING	MDA(H)	875(228)	895(248)	895(248)	Time	min:sec	6:04	4:52	4:03	3:28	3:02	2:42
	VIS	3500	3500	3600	Rate of descent	m/s	2.2	2.7	3.2	3.8	4.3	4.9

Changes: Landing minima, OBST.