

# HI-ILS or LOC Z RWY 4L

LOC I-SSC <b>110.1</b>	APCH CRS <b>043°</b>	Rwy Idg TDZE Arprt Elev	4L <b>10,014</b> <b>240</b> <b>241</b>	4R <b>8014</b> <b>236</b> <b>241</b>
---------------------------	-------------------------	-------------------------------	---	---

JAL-409 [USAF]

SHAW AFB (KSSC)

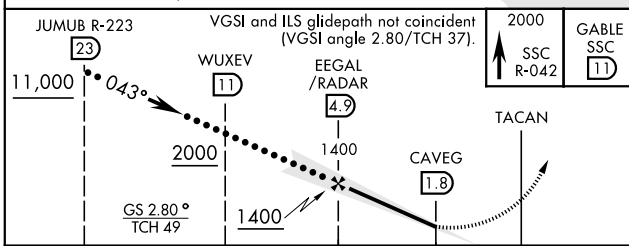
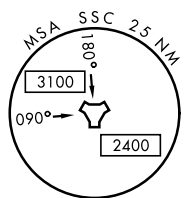
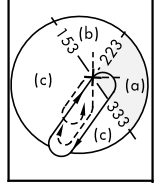
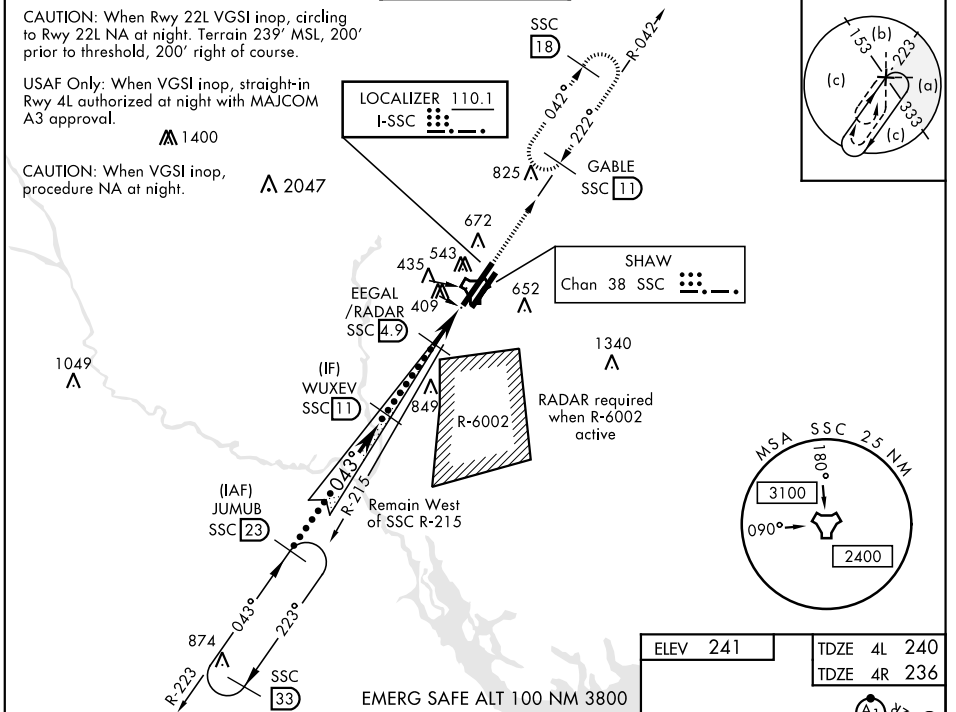
RADAR or DME Required.

\* When ALS inop, increase vis to 1 5/8 miles.

ALSF-1  
A1

MISSED APPROACH: Climbing to 2000, intercept SSC TACAN R-042 to GABLE and hold.

ATIS ★ <b>132.125 270.1</b>	SHAW APP CON <b>125.4 318.1</b>	SHAW TOWER ★ <b>126.65 254.25</b>	GND CON <b>126.1 275.8</b>	CLNC DEL <b>126.1 275.8</b>
--------------------------------	------------------------------------	--------------------------------------	-------------------------------	--------------------------------



ELEV 241	TDZE 4L 240
	TDZE 4R 236

519 A

502 ☆

450 A

389 A

392 A

TWR 340

392 A

4L, 4R

043° 3.7 NM from FAF

HIRL all Rwy

FAF to MAP 3.1 NM

Knots	120	140	160	180	200
Min:Sec	1:33	1:20	1:10	1:02	0:56

CATEGORY	C	D	E
S-ILS 4L *	490/50	250	(300-1)
S-LOC 4L *	780/55	540	(600-1)
SIDESTEP * 4R	780-1 3/8	544	(600-1 3/8)
CIRCLING	1000-2 1/4 759 (800-2 1/4)	1000-2 1/2 759 (800-2 1/2)	1000-2 3/4 759 (800-2 3/4)

# HI-ILS or LOC Z RWY 4L

SE-2, 20 MAR 2025 to 17 APR 2025

SE-2, 20 MAR 2025 to 17 APR 2025