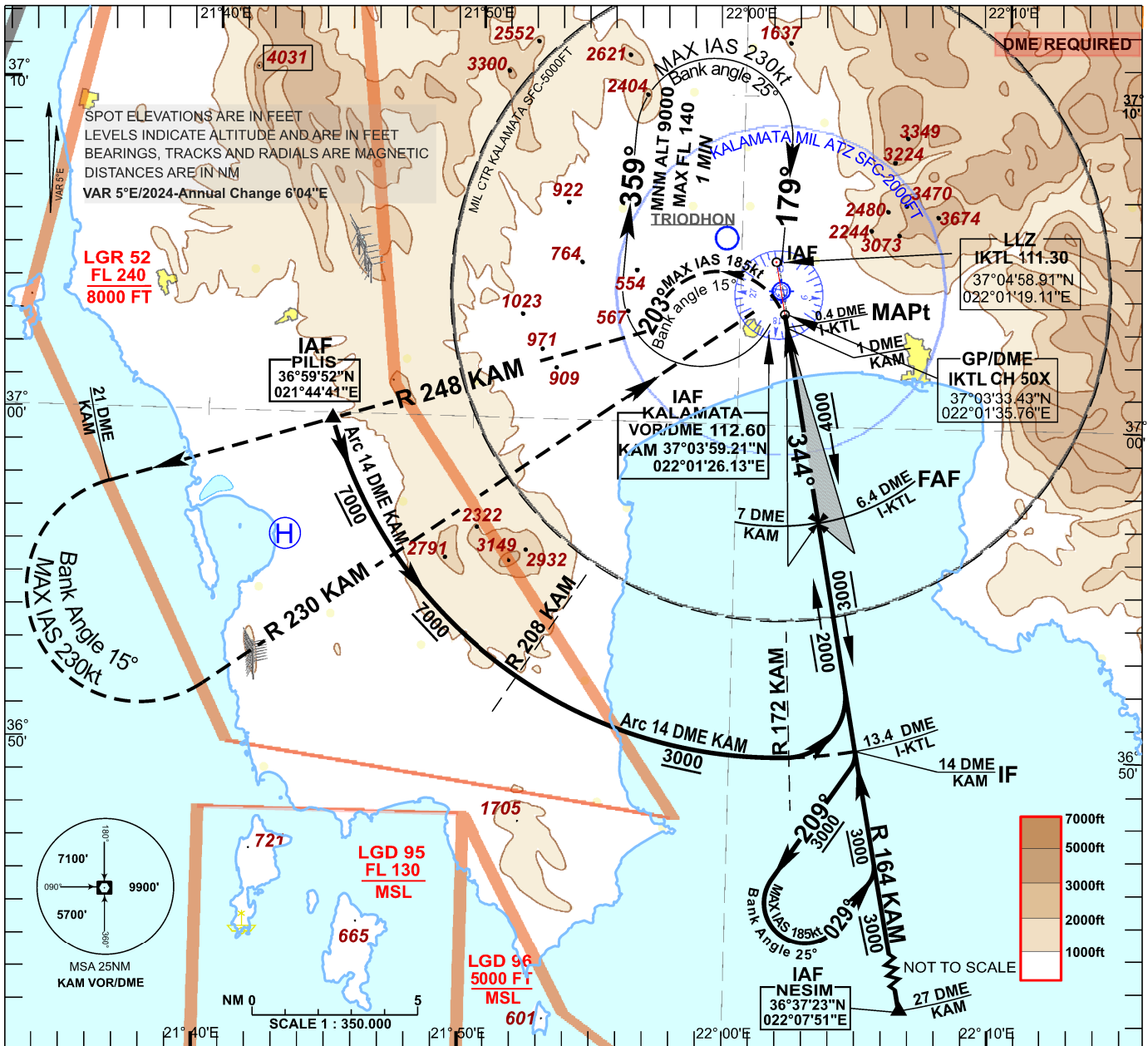


**INSTRUMENT APPROACH
CHART - ICAO**

AERODROME ELEV 26FT
HEIGHTS RELATED TO
THR RWY 35 L - ELEV 16FT

APP 120.750 122.100 362.300
TWR 120.750 122.100 257.800

**KALAMATA
LLZ z RWY 35L**



Changes: Magnetic Variation, OCH

TRANSITION ALT 9000ft

MISSED APPROACH:

At 0.4 DME/I-KTL turn LEFT to track 203° (MAX IAS 185KT, Bank Angle 15°), intercept and follow R 248 KAM.
At R 248 KAM/21 DME Fix turn LEFT, intercept and follow R 230 KAM and enter the holding pattern. Climb to 9000 ft.

THR ELEV 16
NM to/from THR RWY 35 L

I-KTL DME	2	3	4	5	6	5
ALT 5.2° APP	601	919	1237	1555	1873	

NOTE : Minimum OCA (H) for aircraft utilising a 4.0% missed approach climb gradient until passing 5000ft

OCA (H)	A	B	C	D
Straight - in Approach	500 (490)			
Circling West of RWY	600(580)	730(710)	1050(1030)	1310(1290)

NOTE : Minimum OCA (H) for aircraft utilising a 2.5% missed approach climb gradient.

OCA (H)	A	B	C	D
Straight - in Approach	1010 (1000)			
Circling West of RWY	1010(990)	1010(990)	1050(1030)	1310(1290)

Coordinates of significant points:
FAF: 344°/6.4 DME/I-KTL: (36°57'05.12"N, 022°03'09.52"E)
IF: 344°/13.4 DME/I-KTL: (36°50'10.78"N, 022°04'45.71"E)
TP of Missed Approach R 248/21 DME fix: (36°57'46.78"N, 021°36'19.24"E)