

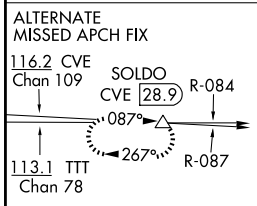
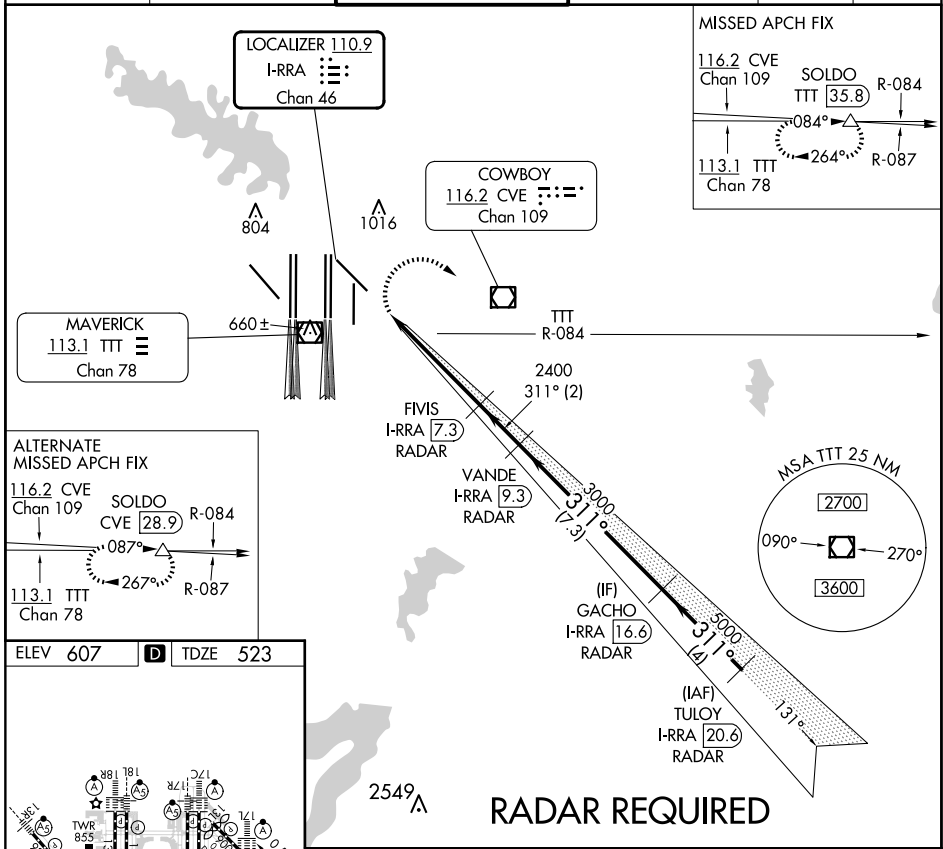
LOC/DME I-RRR 110.9 Chan 46	APP CRS 311°	Rwy Idg TDZE Apt Elev 8373 523 607
---	------------------------	--

CONVERGING ILS RWY 31R

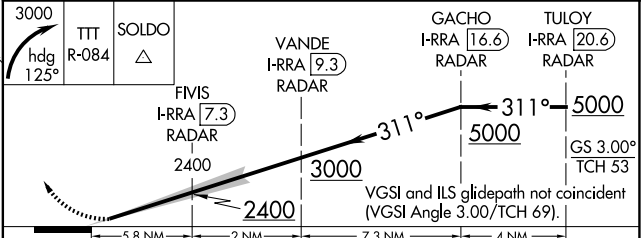
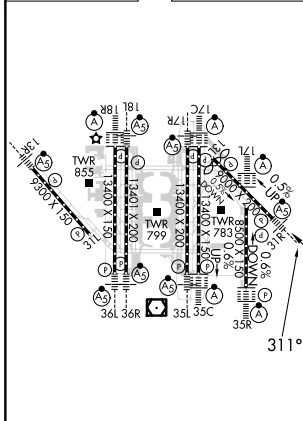
DALLAS-FORT WORTH INTL (DFW)

⚠ Inop table does not apply. DME required. Simultaneous converging approach authorized with Converging ILS Rwy 35L/C and Converging ILS Rwy 36L/R.	MALSR 	MISSED APPROACH: Climbing right turn to 3000 on heading 125° and on TTT VOR/DME R-084 to SOLD0/TTT 35.8 DME and hold.
---	-----------	---

D-ATIS ARR 123.775 DEP 135.925	LONE STAR APP CON 135.5 125.2	DFW TOWER 126.55 127.5 EAST 124.15 134.9 WEST	GND CON 121.65 121.8 EAST 121.85 WEST	CLNC DEL 128.25	CPDLC
--	---	---	---	---------------------------	-------



ELEV 607	D	TDZE 523
-----------------	----------	-----------------



CATEGORY	A	B	C	D
S-ILS 31R	1528-4	1005 (1000-4)	1583-4 1060 (1000-4)	NA

CONVERGING ILS RWY 31R

SC-2, 20 MAR 2025 to 17 APR 2025

SC-2, 20 MAR 2025 to 17 APR 2025