

STANDARD DEPARTURE CHART-INSTRUMENT

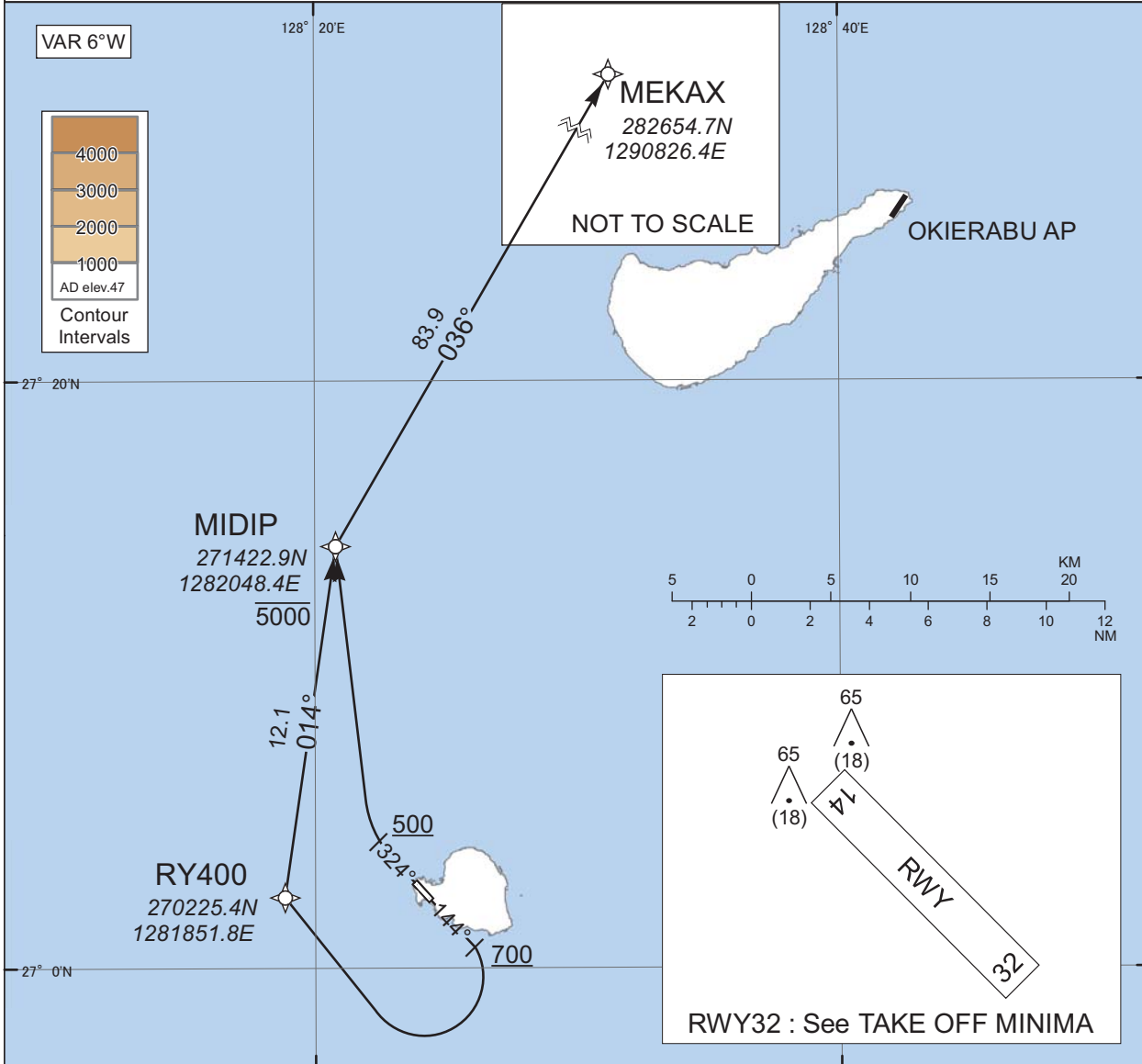
RORY / YORON

RNAV SID

MEKAX ONE DEPARTURE

RNP1

Note GNSS required.



CHANGE : Navigation Specification(Basic RNP1 → RNP1).

RWY14 : Climb on HDG144° at or above 700FT, turn right direct to RY400, to MIDIP at or below 5000FT, to MEKAX.

RWY32 : Climb on HDG324° at or above 500FT, turn right direct to MIDIP at or below 5000FT, to MEKAX.

Note RWY14 : 5.0% climb gradient required up to 700FT.
OBST ALT 353FT located at 1.5NM 127° FM end of RWY14.

STANDARD DEPARTURE CHART-INSTRUMENT

RORY / YORON

RNAV SID

MEKAX ONE DEPARTURE

RWY14

| Serial Number | Path Descriptor | Waypoint Identifier | Fly Over | Course °M(°T) | Magnetic Variation | Distance (NM) | Turn Direction | Altitude (FT) | Speed (KIAS) | Vertical Angle | Navigation Specification |
|---------------|-----------------|---------------------|----------|----------------|--------------------|---------------|----------------|---------------|--------------|----------------|--------------------------|
| 001 | VA | - | - | 144 (138.2) | -6.0 | - | - | +700 | - | - | RNP1 |
| 002 | DF | RY400 | - | - | -6.0 | - | R | - | - | - | RNP1 |
| 003 | TF | MIDIP | - | 014 (008.2) | -6.0 | 12.1 | - | -5000 | - | - | RNP1 |
| 004 | TF | MEKAX | - | 036 (030.0) | -6.0 | 83.9 | - | - | - | - | RNP1 |

RWY32

| Serial Number | Path Descriptor | Waypoint Identifier | Fly Over | Course °M(°T) | Magnetic Variation | Distance (NM) | Turn Direction | Altitude (FT) | Speed (KIAS) | Vertical Angle | Navigation Specification |
|---------------|-----------------|---------------------|----------|----------------|--------------------|---------------|----------------|---------------|--------------|----------------|--------------------------|
| 001 | VA | - | - | 324 (318.2) | -6.0 | - | - | +500 | - | - | RNP1 |
| 002 | DF | MIDIP | - | - | -6.0 | - | R | -5000 | - | - | RNP1 |
| 003 | TF | MEKAX | - | 036 (030.0) | -6.0 | 83.9 | - | - | - | - | RNP1 |

CHANGE : Navigation Specification(Basic RNP1 → RNP1).