

STANDARD ARRIVAL CHART-INSTRUMENT

RJKA / AMAMI

RNAV STAR RWY03

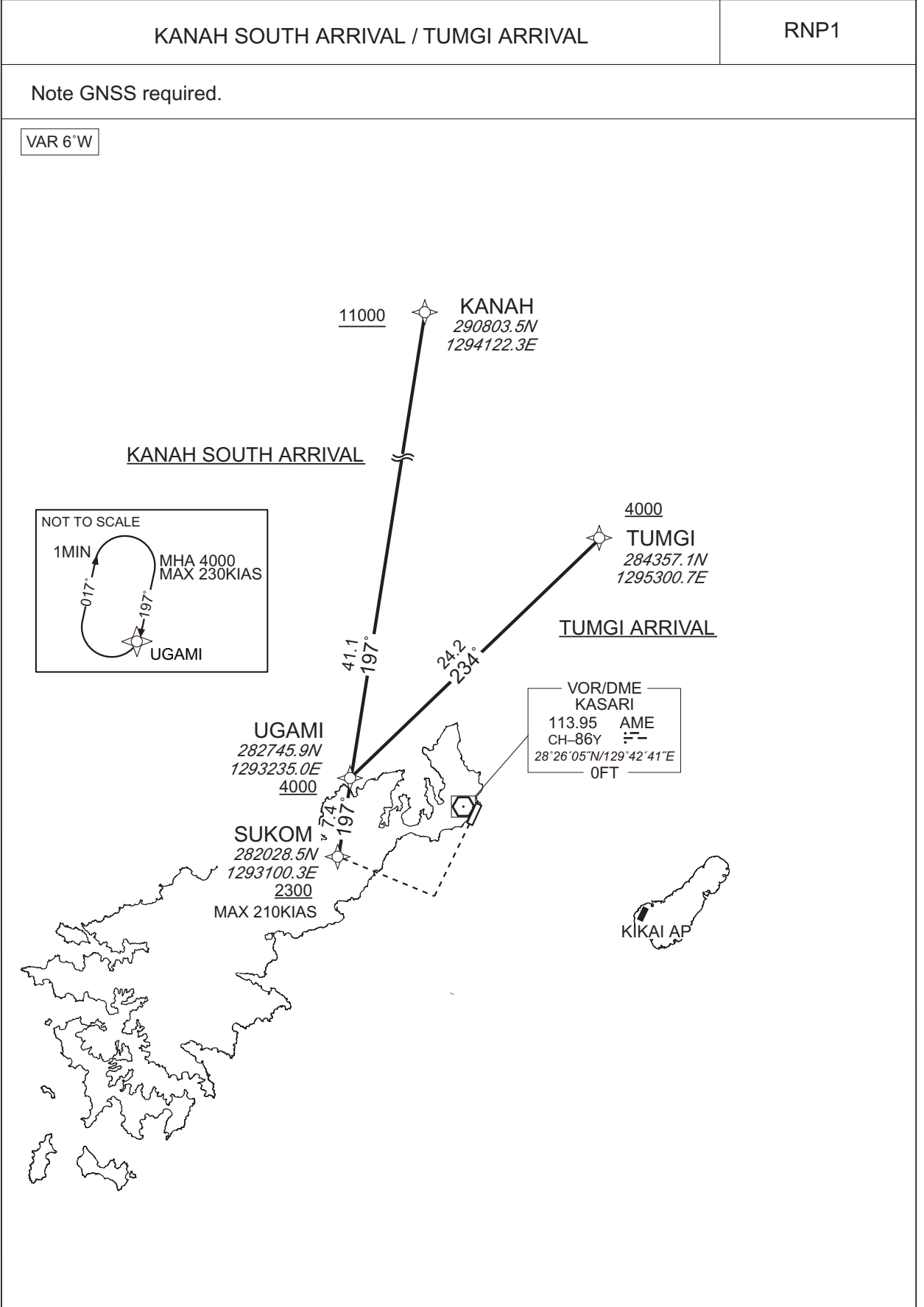
KANAH SOUTH ARRIVAL / TUMGI ARRIVAL

RNP1

Note GNSS required.

VAR 6°W

CHANGE : Navigation Specification(Basic RNP1 → RNP1).



STANDARD ARRIVAL CHART-INSTRUMENT

RJKA / AMAMI

RNAV STAR RWY03

KANAH SOUTH ARRIVAL

From KANAH at or above 11000FT, to UGAMI at or above 4000FT, to SUKOM at or above 2300FT.

Serial Number	Path Descriptor	Waypoint Identifier	Fly Over	Course °M(°T)	Magnetic Variation	Distance (NM)	Turn Direction	Altitude (FT)	Speed (KIAS)	Vertical Angle	Navigation Specification
001	IF	KANAH	-	-	-6.3	-	-	+11000	-	-	RNP1
002	TF	UGAMI	-	197 (190.9)	-6.3	41.1	-	+4000	-	-	RNP1
003	TF	SUKOM	-	197 (190.8)	-6.3	7.4	-	+2300	-210	-	RNP1

TUMGI ARRIVAL

From TUMGI at or above 4000FT, to UGAMI at or above 4000FT, to SUKOM at or above 2300FT.

Serial Number	Path Descriptor	Waypoint Identifier	Fly Over	Course °M(°T)	Magnetic Variation	Distance (NM)	Turn Direction	Altitude (FT)	Speed (KIAS)	Vertical Angle	Navigation Specification
001	IF	TUMGI	-	-	-6.3	-	-	+4000	-	-	RNP1
002	TF	UGAMI	-	234 (228.0)	-6.3	24.2	-	+4000	-	-	RNP1
003	TF	SUKOM	-	197 (190.8)	-6.3	7.4	-	+2300	-210	-	RNP1

Path	Waypoint Identifier	Inbound Course °M(°T)	Magnetic Variation	Outbound Time (MIN)	Turn Direction	Minimum Altitude (FT)	Maximum Altitude (FT)	Speed (KIAS)	Navigation Specification
Hold	UGAMI	197 (190.8)	-6.3	1.0 (-14000)	R	4000	FL140	-230 (-14000)	RNP1

CHANGE : Navigation Specification(Basic RNP1 → RNP1).