

# RNAV (GPS) RWY 14L

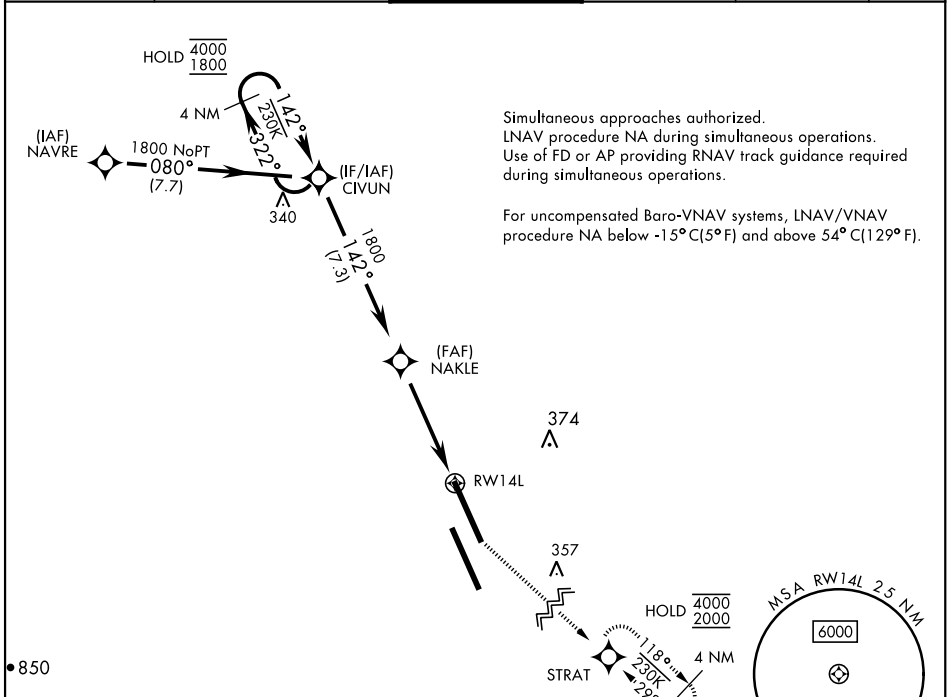
WAAS Chan <b>70209</b> <b>W14A</b>	APCH CRS <b>142°</b>	Rwy Idg <b>13,502</b> TDZE <b>219</b> Arprt Elev <b>228</b>
--	-------------------------	---

[USN]

LEMOORE NAS (REEVES FIELD) (KNLC)

DME/DME RNP-0.3 NA		MISSED APPROACH: Climb to 1200, then climb left turn to 2000 direct STRAT and hold.			
--------------------	--	---	--	--	--

ATIS ★ <b>121.575 327.15</b>	APP CON <b>124.1 269.025 (N)</b> <b>118.15 269.025 (S)</b>	TOWER ★ <b>128.3 340.2</b>	GND CON <b>121.65 305.2</b>	CLNC DEL <b>124.1 371.9</b>	ASR/PAR
---------------------------------	--	-------------------------------	--------------------------------	--------------------------------	---------



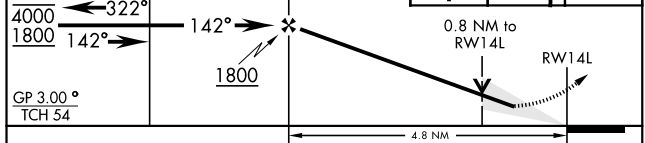
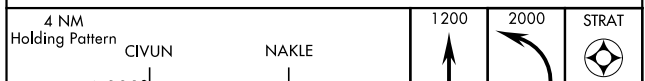
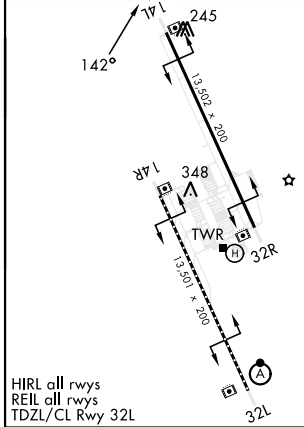
Simultaneous approaches authorized.  
 LNAV procedure NA during simultaneous operations.  
 Use of FD or AP providing RNAV track guidance required during simultaneous operations.  
 For uncompensated Baro-VNAV systems, LNAV/VNAV procedure NA below -15°C(5°F) and above 54°C(129°F).

SW-2, 20 MAR 2025 to 17 APR 2025

SW-2, 20 MAR 2025 to 17 APR 2025

EMERG SAFE ALT 100 NM 16,500

ELEV 228	TDZE 219
----------	----------



GP 3.00° TCH 54				
CATEGORY	A	B	C	D
LPV DA	419-3/4	200	(200-3/4)	
LNAV/VNAV DA	469-3/4	250	(300-3/4)	
LNAV MDA	520-1	301	(300-1)	
CIRCLING	680-1	452 (500-1)	700-1 1/2 472 (500-1 1/2)	780-2 552 (600-2)

# RNAV (GPS) RWY 14L