

BILOXI, MISSISSIPPI

# RNAV (GPS) RWY 22

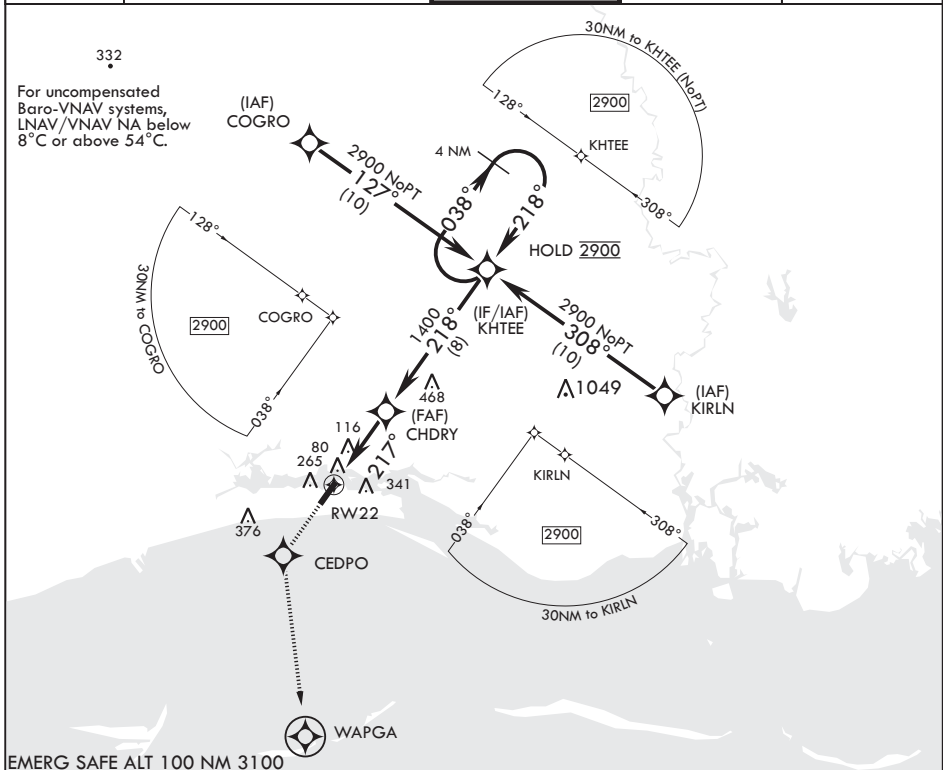
APCH CRS	Rwy Idg	<b>6630</b>
<b>217°</b>	THRE	<b>17</b>
	Arprt Elev	<b>33</b>

AL-49 (USAF)

KEESLER AFB (KBIX)

RNP APCH	ALSF-1	MISSED APPROACH: Climb to 2200 direct CEDPO and track 175° to WAPGA. Expect ATC instructions.
<p>▼ * When ALS inop, increase vis to 1 3/8 miles.                  ** When ALS inop, increase CAT AB RVR to 55, vis to 1 mile; CAT CD vis to 1 3/8 miles.</p>	(A1)	

ATIS <b>281.55</b>	GULFPORT APP CON/DEP CON <b>124.6 354.1 130° - 309° 127.5 254.25 310° - 129°</b>	TOWER* <b>120.75 269.075</b>	GND CON <b>121.8 275.8</b>	CLNC DEL <b>121.8 275.8</b>
-----------------------	---	---------------------------------	-------------------------------	--------------------------------



<p>2200 CEDPO tr 175° WAPGA</p> <p>KHTEE 4 NM Holding Pattern 038° 2900</p> <p>CHDRY 218° 1400</p> <p>RW22 1.4 NM to RW22 217°</p> <p>GP 3.04° TCH 53</p> <p>4.1 NM</p>	<p>ELEV 33</p> <p>Rwy 4 Idg 6030'</p> <p>Rwy 22 Idg 6630'</p> <p>THRE 17</p> <p>217°</p> <p>74 45 74 150 195</p> <p>74 30 150 195</p> <p>TWR</p> <p>195</p> <p>195</p> <p>HIRL all Rwys REIL Rwy 4 Rwy 22 2000' non-std apch lgt system</p>																				
<table border="1"> <tr> <td>CATEGORY</td> <td>A</td> <td>B</td> <td>C</td> <td>D</td> </tr> <tr> <td>LNAV/VNAV DA*</td> <td colspan="2">520-1¼</td> <td colspan="2">503 (500-1¼)</td> </tr> <tr> <td>LNAV MDA**</td> <td>520/40 503 (500-¾)</td> <td>520-1¼ 503 (500-1¼)</td> <td>520-1¼ 503 (500-1¼)</td> <td>520-1¼ 503 (500-1¼)</td> </tr> <tr> <td>CRCLING</td> <td>580-1 547 (600-1)</td> <td>660-1 627 (700-1)</td> <td>680-1¼ 647 (700-1¼)</td> <td>680-2 647 (700-2)</td> </tr> </table>	CATEGORY	A	B	C	D	LNAV/VNAV DA*	520-1¼		503 (500-1¼)		LNAV MDA**	520/40 503 (500-¾)	520-1¼ 503 (500-1¼)	520-1¼ 503 (500-1¼)	520-1¼ 503 (500-1¼)	CRCLING	580-1 547 (600-1)	660-1 627 (700-1)	680-1¼ 647 (700-1¼)	680-2 647 (700-2)	
CATEGORY	A	B	C	D																	
LNAV/VNAV DA*	520-1¼		503 (500-1¼)																		
LNAV MDA**	520/40 503 (500-¾)	520-1¼ 503 (500-1¼)	520-1¼ 503 (500-1¼)	520-1¼ 503 (500-1¼)																	
CRCLING	580-1 547 (600-1)	660-1 627 (700-1)	680-1¼ 647 (700-1¼)	680-2 647 (700-2)																	

BILOXI, MISSISSIPPI

30°25'N - 88°55'W

KEESLER AFB (KBIX)

Amdt 2 21APR22

# RNAV (GPS) RWY 22

SC-4, 20 MAR 2025 to 17 APR 2025

SC-4, 20 MAR 2025 to 17 APR 2025