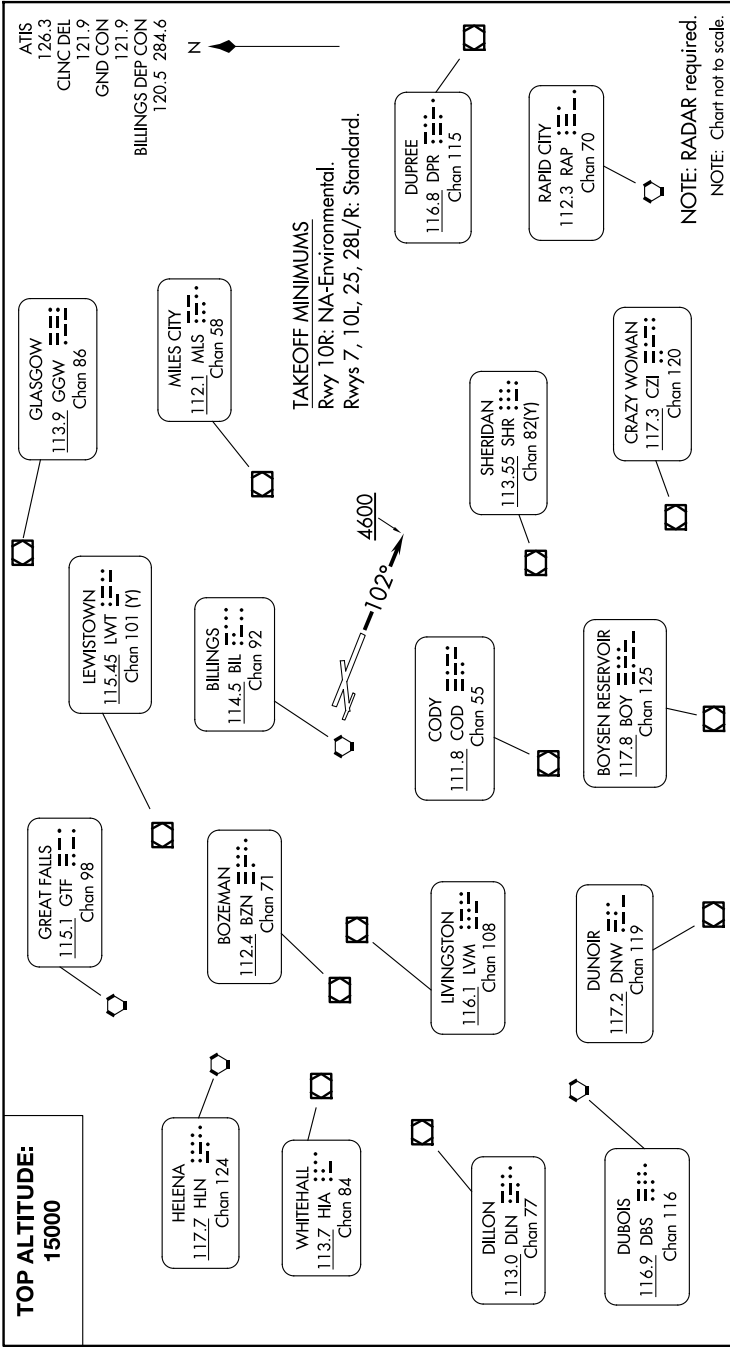


BILLINGS FIVE DEPARTURE

AL-48 (FAA)

BILLINGS LOGAN INTL (BIL)
BILLINGS, MONTANA

NW-1, 20 MAR 2025 to 17 APR 2025



DEPARTURE ROUTE DESCRIPTION

TAKEOFF RUNWAYS 7, 25, 28L/R: Climb on assigned heading for vectors to assigned fix/route, thence, . . .

TAKEOFF RUNWAY 10L: Climb heading 102° to 4600, then on assigned heading for vectors to assigned fix/route, thence, . . .

. . . maintain 15000 or assigned lower altitude. Expect clearance to filed altitude/flight level five minutes after departure.

LOST COMMUNICATIONS: If no transmissions are received for 1 minute after departure, fly last assigned heading until reaching 7000. Proceed direct BIL VORTAC, then on last routing cleared and climb to filed altitude.

NW-1, 20 MAR 2025 to 17 APR 2025

BILLINGS FIVE DEPARTURE

BILLINGS, MONTANA
BILLINGS LOGAN INTL (BIL)