

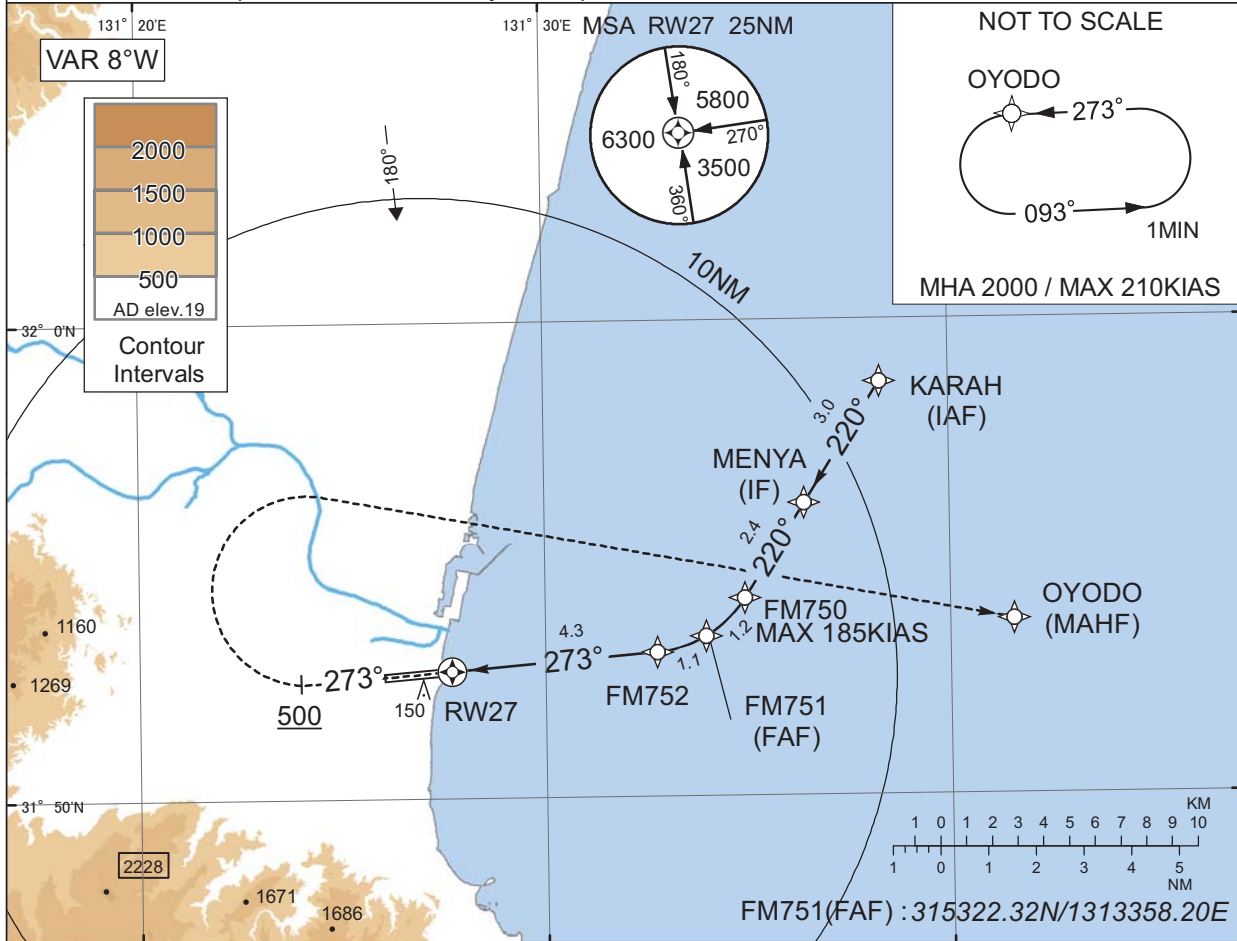
INSTRUMENT APPROACH CHART

RJFM / MIYAZAKI

RNP RWY27(AR)

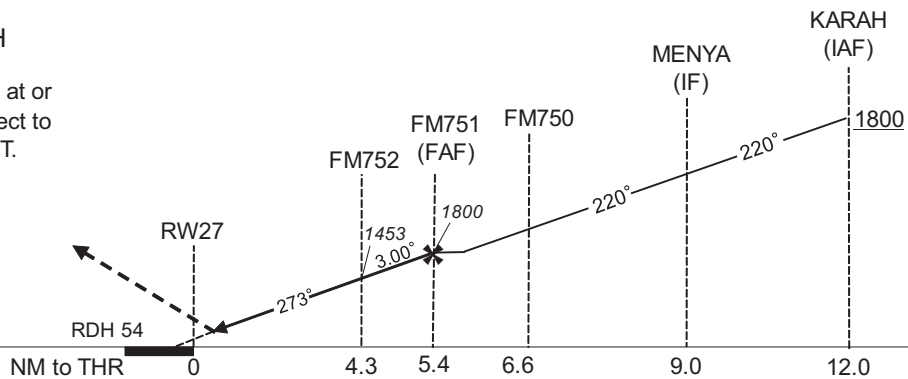
KAGOSHIMA APP 121.4 - 362.3 120.9 - 261.2	RNP AR RF required.	MIYAZAKI TOWER 118.3 - 126.2 123.6 - 261.2	RADAR AVBL ATIS 126.8
---	------------------------	--	--------------------------

For uncompensated Baro-VNAV systems, procedure not authorized below -5°C / above 45°C



MISSED APPROACH

From RW27 on track 273°, at or above 500FT turn right, direct to OYODO and hold at 2000FT. Contact KAGOSHIMA APP.



MINIMA	THR elev. 21	AD elev. 19
CAT	RNP 0.30	
A	DA(H)	RVR/CMV
B	-	-
C	321(300)	1800
D		2000

Authorization Required

CHANGE : VAR. PROC course. HLDG pattern at OYODO.

INSTRUMENT APPROACH CHART

RJFM / MIYAZAKI

RNP RWY27(AR)

Coding Table

Serial Number	Path Descriptor	Waypoint Identifier	Fly Over	Course °M(°T)	Magnetic Variation	Distance (NM)	Turn Direction	Altitude (FT)	Speed (KIAS)	VPA/ RDH (°/FT)	RNP Value
001	IF	KARAH	-	-	-7.5	-	-	+1800	-	-	-
002	TF	MENYA	-	220 (212.3)	-7.5	3.0	-	-	-	-	0.3
003	TF	FM750	-	220 (212.3)	-7.5	2.4	-	-	-185	-	0.3
004	RF Center: FMRF3 r=2.43NM	FM751	-	-	-7.5	1.2	R	1800	-	-	0.3
005	RF Center: FMRF3 r=2.43NM	FM752	-	-	-7.5	1.1	R	1453	-	-3.00	0.3
006	TF	RW27	Y	273 (265.2)	-7.5	4.3	-	75	-	-3.00/54	0.3
007	FA	-	-	273 (265.2)	-7.5	-	-	+500	-	-	1.0
008	DF	OYODO	-	-	-7.5	-	R	2000	-	-	1.0

Path	Waypoint Identifier	Inbound Course °M(°T)	Magnetic Variation	Outbound Time (MIN)	Turn Direction	Minimum Altitude (FT)	Maximum Altitude (FT)	Speed (KIAS)	RNP Value
Hold	OYODO	273 (265.9)	-7.5	1.0 (-14000)	L	2000	FL140	-210(-14000)	1.0

Waypoint Coordinates

Waypoint Identifier	Coordinates	RF Arc Center Identifier	Coordinates
KARAH	315841.41N / 1313818.57E	FMRF3	315528.33N / 1313231.52E
MENYA	315609.28N / 1313625.03E		
FM750	315409.97N / 1313456.09E		
FM751	315322.32N / 1313358.20E		
FM752	315302.73N / 1313245.72E		
RW27	315241.06N / 1312741.80E		
OYODO	315340.52N / 1314134.32E		

CHANGE : PROC course. VAR. HLDG pattern at OYODO added.