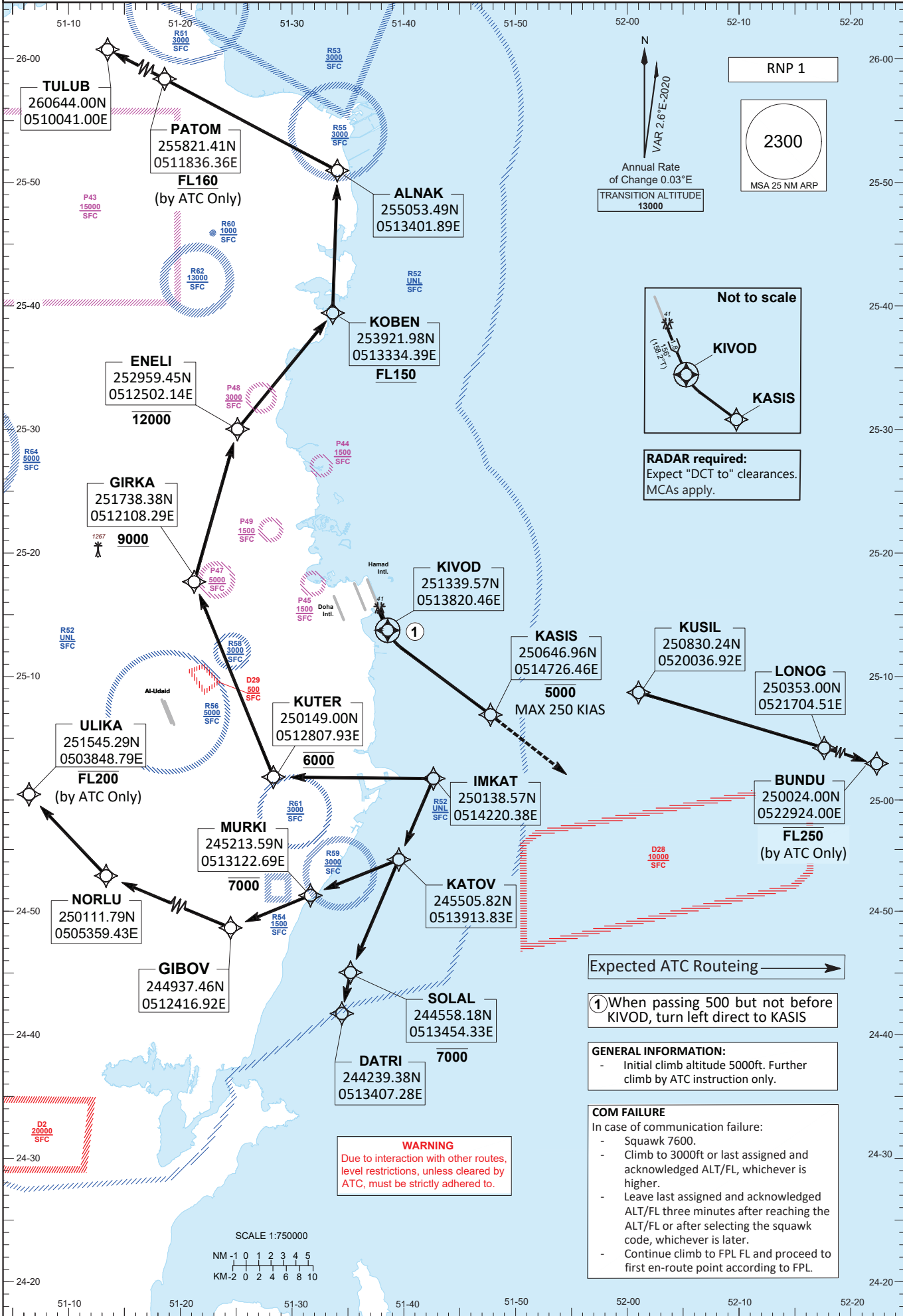


STANDARD DEPARTURE CHART - INSTRUMENT (SID) - ICAO

DIST IN NM BEARINGS ARE MAGNETIC ALTITUDES AND ELEV IN FEET

DOHA RADAR NORTH	121.100 / 121.625
DOHA RADAR SOUTH	120.675 / 119.150
DOHA APP WEST	119.725 / 125.125
DOHA APP EAST	124.775 / 120.600
HAMAD TWR EAST	118.525 / 118.225

DOHA/Hamad Intl. (OTHH) RNP RWY 16L KASIS TWO RADAR DEPARTURE KASIS 2



Change: Added initial climb information in the general information, editorial in chart identification.

RNP 1

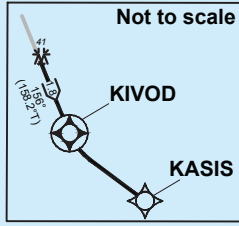
2300

MSA 25 NM ARP

Annual Rate of Change 0.03°E

TRANSITION ALTITUDE 13000

VAR 2.6°E-2020



RADAR required:
Expect "DCT to" clearances. MCAs apply.

Expected ATC Routeing →

① When passing 500 but not before KIVOD, turn left direct to KASIS

GENERAL INFORMATION:

- Initial climb altitude 5000ft. Further climb by ATC instruction only.

COM FAILURE

In case of communication failure:

- Squawk 7600.
- Climb to 3000ft or last assigned and acknowledged ALT/FL, whichever is higher.
- Leave last assigned and acknowledged ALT/FL three minutes after reaching the ALT/FL or after selecting the squawk code, whichever is later.
- Continue climb to FPL FL and proceed to first en-route point according to FPL.

WARNING

Due to interaction with other routes, level restrictions, unless cleared by ATC, must be strictly adhered to.

