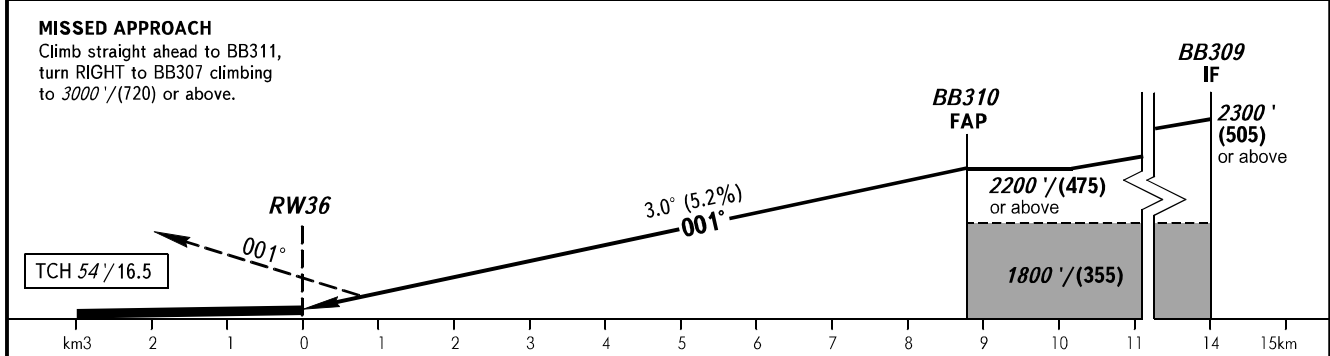
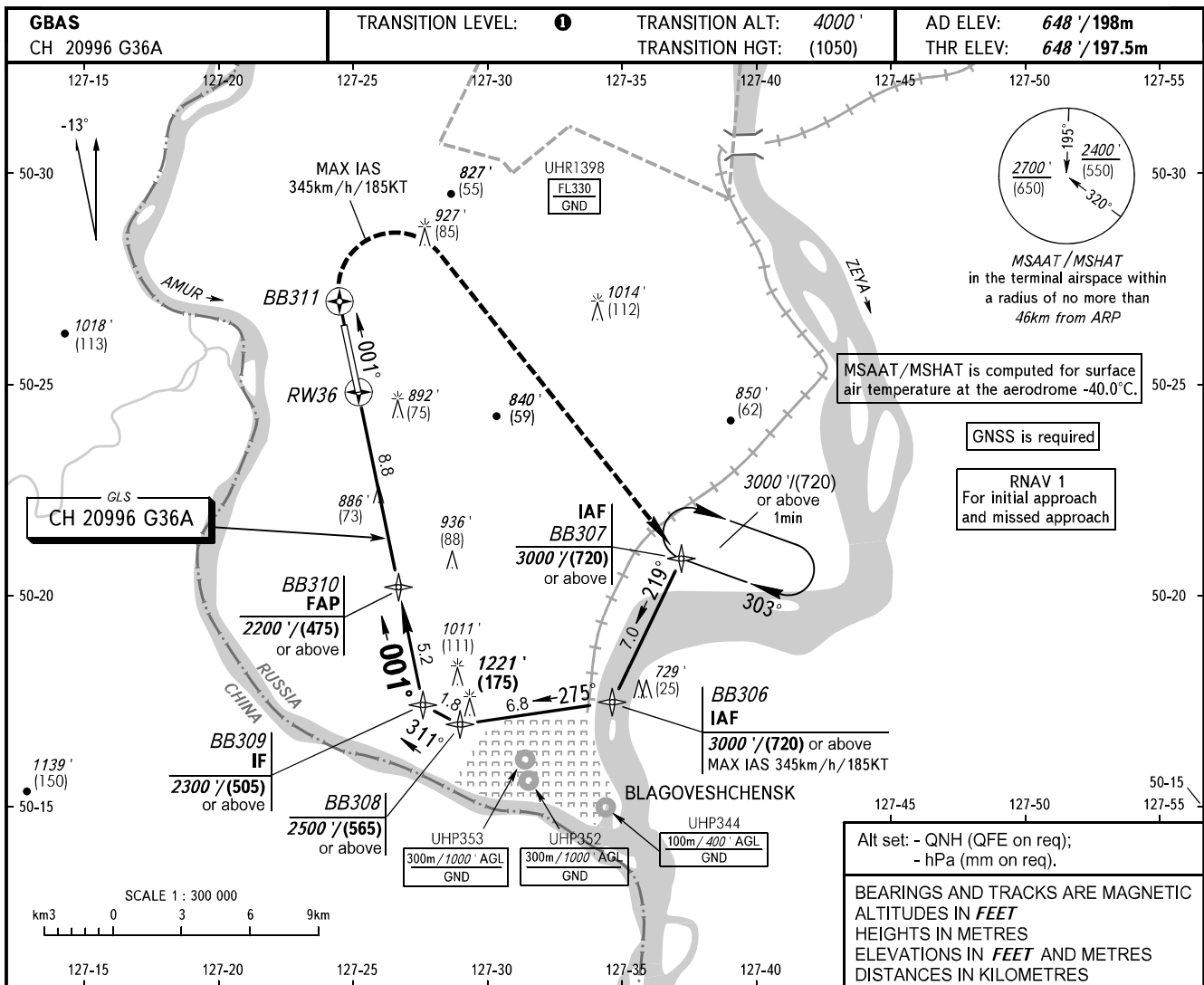


**INSTRUMENT  
APPROACH  
CHART - ICAO**

BLAGOVESHCHENSK TOWER 127.200

**BLAGOVESHCHENSK, RUSSIA  
IGNATYEVO  
GLS RWY 36**



OCA(H)		A	B	C	D					
Straight-in	CAT I	790' (142') (44)	800' (152') (47)	810' (162') (50)	824' (176') (54)					
	Approach									
Circling		1190' (540') (165)	1220' (570') (175)	1330' (680') (210)	1340' (700') (215)					
GROUND SPEED		km/h		150	180	210	240	270	300	330
		kt		81	97	113	130	146	162	178
RATE OF DESCENT		m/s		2.2	2.6	3.0	3.5	3.9	4.3	4.8
		ft/min		427	512	597	682	768	853	938

**TRANSITION LEVEL:**

- FL050 when QNH is 1013 hPa (760mm mercury column) or above;
- FL060 when QNH is 977 hPa (733mm mercury column) or above, but less than 1013 hPa (760mm mercury column);
- FL070 when QNH is less than 977 hPa (733mm mercury column).

Visual manoeuvring to the west of AD is PROHIBITED.

Visual manoeuvring to the west of AD is PROHIBITED.